

Merry Christmas

The Chelsea Standard

WEATHER
Min. Max. Precip.
Dec. 19 33 43 0.00
Dec. 20 34 45 0.00
Dec. 21 35 46 0.00
Dec. 22 36 47 0.00
Dec. 23 37 48 0.00
Dec. 24 38 49 0.00
Dec. 25 39 50 0.00
Dec. 26 40 51 0.00
Dec. 27 41 52 0.00
Dec. 28 42 53 0.00
Dec. 29 43 54 0.00
Dec. 30 44 55 0.00
Dec. 31 45 56 0.00

QUOTE

"As to the ungrateful, there is not one who does not at last die miserable."
—Jean De La Fontaine

SEVENTY-EIGHTH YEAR—No. 26

22 Pages This Week

CHELSEA, MICHIGAN, THURSDAY, DECEMBER 21, 1967

10c per Copy

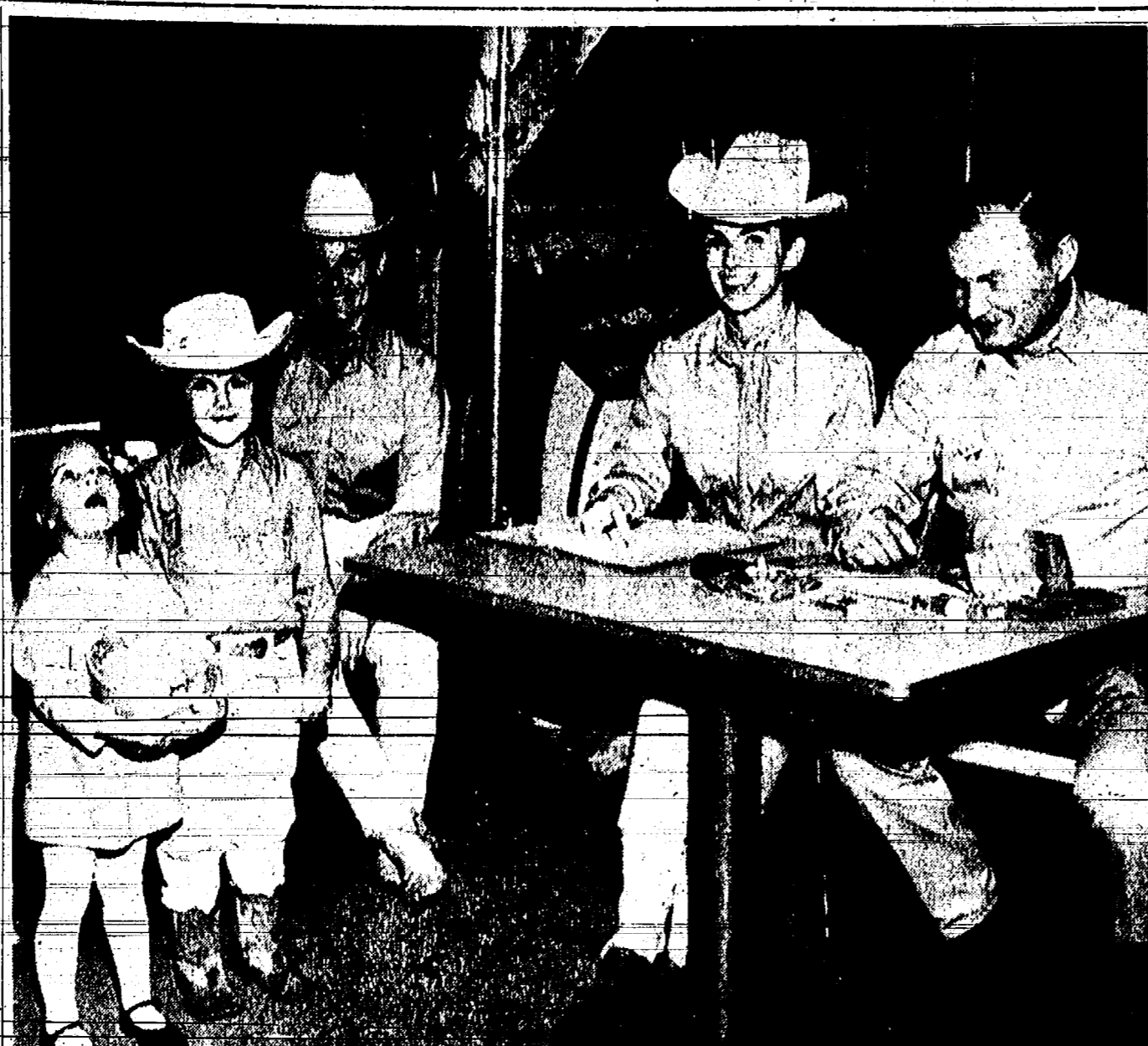
SUBSCRIPTION \$3.00 PER YEAR

Police Nab Kidnapping Stealing Free Lights

Police nabbed a cooly who had stolen a car and had been driving it for the past nine days. The juvenile, ages 9 through 11, was apprehended Tuesday, Dec. 12 for stealing Christmas lights from houses in the area of McKinley, Howard, and East Sts. Restitution of the bulbs of approximately \$100 was made and the children released to their parents. A 12-year-old girl was caught stealing from the owner of a store. The girl returned the bulbs and was not held.

Camera Club Elects J. Liebeck As New President

Members of the Chelsea Camera Club met for their regular meeting Tuesday, Dec. 19 to elect officers for the coming year. Chosen to serve beginning in January, 1968, were James Liebeck, president; Kathleen Churchman, vice-president; Marion Longworth, secretary-treasurer, and members of the board of directors: John Ford, Mildred McPadden and Elwin Beach.



WINS DOOR PRIZE: An astonished look on her face, young Chris Graf holds the Trail Blazers Riding club's door prize, a plastic bowl filled with home-made cookies, which she won at their Christmas party Sunday. Onlookers include, from left, Susan Schultz of Dexter, who presented Chris with the prize; Mrs. Nick Mihut; Marie Schultz, club secretary-treasurer; and W. W. Williamson, club president.

R. Lesser Wins Prize for Top Deer in State

Reuben A. Lesser, Jr. of 14110 Old US-12, appeared on the "Michigan Outdoors" show on WJL-TV, channel 4, Thursday, Dec. 14 at 7 p.m. to claim the top prize in the annual statewide contest for the buck with the largest rack spread and number of points. Shaw Shelly Mott Neff and Howard Shelly presented Lesser with his award, a Polaris snowmobile and trailer.

Wrestlers Pin 48-6 Defeat On Dundee

If the Dundee Vikings were seeking revenge for last year's 58-0 lumbasting the Chelsea wrestlers gave them, they'll have to wait until next year. Last Thursday night the Chelsea team turned back the Vikings with a lopsided performance.

Kiwanis Club Okays Music Scholarship

The Chelsea Kiwanis Club voted to provide a \$200 scholarship for the 1968 Musical Youth International which will be assigned locally to Heidi Sprague. Heidi is a sophomore at Chelsea High school who was chosen to be a member of the 1968 Musical Youth International, a group of high school musicians who will make a five-week tour through Mexico and the southwestern United States next summer.

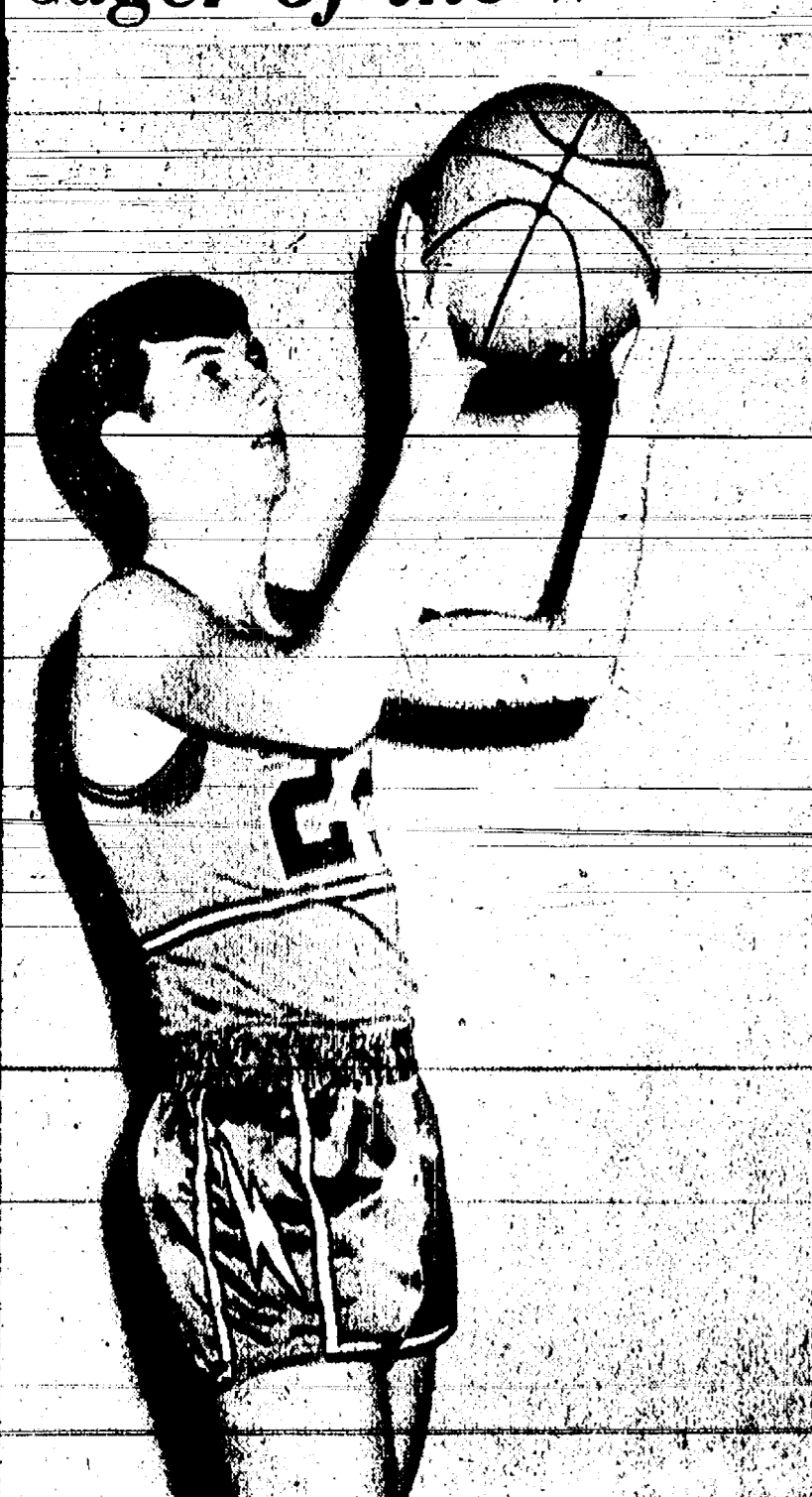
Bulldogs Lose Games with Milan, Lincoln

The Chelsea Varsity basketball team had a busy week-end, playing on both Friday and Saturday nights. Friday, the Bulldogs took on the Big Red of Milan and lost by a final score of 82 to 61. The game got off to a good start for the Bulldogs as they took a quick four point lead over Milan early in the first quarter. But the Reds soon tied up the score and took the lead. From then on, Milan virtually dominated the game.

Crash Cagers Own Dundee

Chelsea's freshman basketball team beat the Dundee team at Dundee, Dec. 14 by a 67-47 score. Chelsea started slowly and, at one point, were behind. In the second quarter, Chelsea began to move and by the end of the game had won by a score of 20 to 10.

Cager of the Week



JOHN LIXEY, No. 22, is a returning starter from last year's varsity team. The 5' 10 1/2" senior was previously with the JV's for two years. Primarily a forward, John occasionally plays guard. He was often the leading scorer for the Bulldogs. During his freshman activities include Varsity Club and Trip Club. During his sophomore year, he was an end on the indoor football team. He has been in H.I.Y. A graduate of St. Mary's, John plans to attend Eastern Michigan University next year. His parents are Mr. and Mrs. Harvey Lixey of 710 S. Main.

Proving Grounds Employees Gather Items for Needy

Employees of Chrysler Proving Grounds have been bringing in toys, canned goods, clothing and other useful items during the past week to be temporarily placed under a Christmas tree, which was put up last Thursday at the plant and decorated by the women employees. Today, a truck from the Proving Grounds will distribute the articles to special service workers in Chelsea and Manchester, who in turn will give them to the areas' needy.

Debate Team Places Third In Tourney

The Chelsea High school varsity debate team tied for third place in the Lakeshore debate league tournament which ended Wednesday, Dec. 13 at Monroe High school. Monroe's team placed first with seven wins and one loss; Jefferson High school was second with four wins and four losses; and Chelsea, Erie Mason, and Saline High schools each shared third place with three wins and five losses.

School Board Briefs

Chelsea Board of Education met in regular session Monday, Dec. 18. Present were trustees: Foster Lancaster, Taylor, Koenn, Hopkins and Powers. Also present were Superintendent Cameron, Business Manager Mills, Principals Jane Conklin and Benedict. Guests present included Miss Martha Ruhn, Mrs. Gail McKnight, Miss Martha Williams, Mrs. Margaret Krecke, Ed Hill, William Coelius and Maurice Hoffman.

Special Christmas Services Planned by Most Area Churches

Cast Chosen For Musical Production

Dr. Alan L. Roy, director of the musical, "Bye-Bye Birdie" to be presented March 15 and 16 in the Chelsea High school auditorium, has announced names of students chosen for the entire cast of the play. More people tried out for this play than for any previous musical and many talented people did not get parts. Decisions of casting were not easy, according to Miss L. Roy.

The cast includes Albert Peterson, played by John Freeman; Rose Alvarez, Sue Knickerbocker; Helen, Pat Gilbert; Nancy, Susan Gray; Alice, Karen Leach; Marie Ann, Dennis Hunter; Renelope, Ann Pat Stoffor; Deborah, Sue Torci Boyer; Suzie, Laurie Langer; Amber, Caryl Thornton; Phyllis, Janice Stephens; Carab John Yocum; Martha Louise, Carolyn Thibouton; Harold, Howie Preado; Karl, Mike Bassett; Henry, Mike Gray; Alfie, Ron Wengren; Fred, Larry Blackwell; Arnold, John Bassett.

Many Choirs Will Present Programs of Sacred Music

Churches in the Chelsea area have scheduled many special programs for the holiday season in addition to their regular worship services. Some of the churches have already given their Christmas presentations, while most are planning services for Christmas Eve or Christmas day.

Immanuel Bible church gave a program entitled "The Message of the Bells" Sunday at 7 p.m. Participating in the presentation were church members of all ages, from nursery school children to adults. The nursery youngsters sang tiny jingle bells, worn on their wrists and shoes, throughout the service, accompanying the junior choir, young people's orchestra, and three older children ringing bells of different pitches. Several adults sang solos and duets. The program, directed by Mrs. Arthur Wiele, also included speaking parts for adults and children.

St. John's Evangelical and Reformed church, Rogers Corners, will hold a Sunday school program at 8 Christmas Eve. The students will perform in a pageant called "The Names of Jesus."

Sunday school students of St. John's Evangelical and Reformed church, Francisco, gave a pageant last Sunday at 7:30 p.m. Cub Scouts from Brighton held a Christmas program last Sunday in the assembly room of the Methodist Home. During the week, several groups have been working at the Home. The chapel at the Home has scheduled a Christmas Eve service at 7 p.m.

Methodist Young People Give Christmas Program

The Sunday school children, ages four through the eighth grade, of First Methodist church presented a Christmas program on Dec. 17 at 6 p.m. A highlight of the program was the "Nativity" scene portrayed by the four- and five-year-olds.

Methodist Young People Give Christmas Program

The Sunday school children, ages four through the eighth grade, of First Methodist church presented a Christmas program on Dec. 17 at 6 p.m. A highlight of the program was the "Nativity" scene portrayed by the four- and five-year-olds.

Methodist Young People Give Christmas Program

The Sunday school children, ages four through the eighth grade, of First Methodist church presented a Christmas program on Dec. 17 at 6 p.m. A highlight of the program was the "Nativity" scene portrayed by the four- and five-year-olds.



CHRISTMAS TREE CUTTERS: Members of Chelsea Rod and Gun club-sponsored Boy Scout Troop 465 cut and loaded trees which the club gave away free to interested area churches Saturday. The 14 boys helping with the project at Pineview club grounds were John Merkel, Dan Merkel, Tim Merkel, Lynn Houle, Bob Taylor, Bill Scott, Chuck Stoddard, Ed Dreiman, Rickie Foytik, Chuck Foytik, Jotham Johnson, Larry Garlick, Carmer Slocum and Doug Schroetenboer. Accompanying the Scouts were Scoutmaster Earl Dreiman, Dick Taylor and Fred Johnson. In the above photo the Scouts were cutting a tree for the Rev. John Fall, administrator of the Chelsea Methodist Home, standing at the left and supervising the project.



Hi! Merry Christmas to Everyone!

THE AL ERESTENS

Alex - Jo - Stephen - Annette - Alex, Jr.



Peace... on earth, good will toward men... may this Christmas bring you and your family a time of lasting peace, joy and multiple blessings. Merry Christmas.

NORMA'S BEAUTY SHOP NORMA and LUCILLE



Thanks, and a very Merry Christmas to all our loyal friends.

We Will Close Saturday, Dec. 23 at 3:30 p.m. Until Tuesday, Dec. 26 at 6 a.m.

CHELSEA RESTAURANT ELLA McMILLAN



GROVE 5c to \$1.00 STORE



FIRST PRIZE WINNER: Carol Curtis received first prize from Ron Satterthwaite at the Trail Blazers Riding Club annual Christmas party and dinner last Sunday. Carol was the air-around high-point winner for club activities during 1967. The silver and gold buckle and hand-tooled leather belt, known as the Larowe award, is sponsored by Larowe Feed Co. Looking on are Ray Franklin and Tom Franklin, club vice-president.

Trail Blazers Club Awards Given at Christmas Party

The Trail Blazers Riding Club's annual Christmas party and dinner was held Sunday afternoon, Dec. 17, at the F & M Restaurant, Chelsea, with Mrs. and Mrs. Kermit Sharp as hosts. The dinner presentation of awards, installation of officers and arrival of Santa Claus by horse-drawn sleigh to the lack of snow was enjoyed by the 55 members and guests attending the occasion. The presentation of awards, long anticipated and earned by junior members only, was one of the highlights of the party. These highly-coveted awards are earned by receiving points in attendance, equipment care, horsemanship, sportsmanship, courtesy and politeness. The first prize, a silver and gold belt buckle and hand-tooled leather belt, was awarded to Carol Curtis, daughter of Mr. and Mrs. Charles Curtis of Chelsea. This buckle and belt prize was sponsored and presented by Ron Satterthwaite of Larowe Feed Co. A \$25 gift certificate was earned by Pam Schultz, daughter of Mr. and Mrs. Robert Schultz of Dexter. This award was sponsored and presented by Harry Schneider of Chelsea. Pam also received a belt buckle with a native stone inset donated and presented by Mrs. Nick Mihut. The third award, consisting of a show halter and lead, went to Denise Salyer, daughter of Mr. and Mrs. Marvin Salyer of Chelsea. The halter was given by the Trail Blazers Riding Club and presented to Denise by Marie Schultz of Dexter, club secretary-treasurer. The final and most coveted award was the Sportsmanship trophy, which can be earned by any member of the club and is based on all-around helpfulness. The decision is made by membership nomination. Mrs. Charles Curtis received the trophy for 1967, which was presented by Mrs. Nick Mihut. There are two sections of the club: the Junior Trail Blazers and the Trail Blazers. Trail Blazer club officers for 1968 installed at the meeting are as follows: W. W. Williamson, president; Tom Franklin, vice-president; Marie Schultz, secretary-treasurer; Harry Schneider, Leonard Reith, Stan Montange and Jim Sexton, directors. For the Junior Trail Blazers, Pam Schultz of Dexter is president and Carol Curtis is secretary-treasurer. The club is based first on service and then on pleasure. Among the service highlights of this year were several rides for handicapped children at Camp Crite and on ride for retarded children at the Sullivan School for the retarded. The club hopes to extend the service programs for more needy organizations in the next year. The pleasure occasions included trail rides, two week-end camps, and entries in Chelsea, Saline and Manchester fair parades. Experts are like ordinary people - they seldom agree.

Holiday Greens Set Scene for Festive Holiday Enjoyment

From the welcoming wreath on the door to the Christmas tree glowing with lights and beaded with tinsel, the festive holiday scene is set for festive holiday enjoyment. Many of the greens have used for Christmas decorations once as formal ornaments, and were credited by the ancients with certain magical powers and virtues. Today, using greens has become a holiday custom, regardless of religious or symbolic significance. One belief is that the first Christmas tree was a palm tree brought from Egypt. The 12 parts of the palm were supposed to represent the 12 apostles, according to the editors of the Encyclopedia Americana. The use of pine and cedar Yule trees is generally thought to be of German derivation. The introduction of the evergreen Christmas trees came to England through the influence of the princess, Victoria of England to the German prince, Albert.

Little Folk Prance Little Folk Prance For Icelanders, Christmas Eve is the holiest night of the holiday season. Tradition says, however, that many years ago elves, dwarfs and other little folks pranced and danced about the streets on the night before Christmas.

Lamaze Association Announces Completion Of Recovery Room Fund

The Lamaze Childbirth Preparation Association announces the realization of the St. Joseph Mercy Hospital Obstetrical Recovery Room Fund of \$2,300. The drive was started in February of this year with the purpose of raising funds to equip the maternity floor recovery room at the hospital. This announcement was made by Mrs. Richard Grimes, chairman of the Recovery Room committee. The Lamaze Association raised this money through film showings, private donations, bake sales and the recent bazaar held at St. Joseph's. The Women's Auxiliary of the St. Joseph Medical Staff contributed \$1,000. The total includes \$1,800 through fund raising projects and \$1,000 from the Hospital Auxiliary. The hospital is at present drawing up plans for completion of the recovery room.



It's Time to Wish you a very MERRY CHRISTMAS! Good cheer to our wonderful friends and customers. We're grateful to one and all. BROWN'S WELDING

GREETINGS



It's really a pleasure to greet our many wonderful friends throughout the community with cheery wishes for a happy holiday season and with sincere thanks for valued patronage.

WESTERN AUTO "The Family Store" Thelma and Clarence Pendley Mrs. Earline Parker

Christmas Blessings



Once again the spirit of Christmas radiates its promise of hope, love and peace throughout the land. As you reflect upon the Miracle and glory of the Holy Birth, may you be comforted by the faith, gladdened by the message and sustained by the inspiration of Christmas, now and always. May holiday joys and blessings be yours.

From All of Us at DANCER'S

Lu - Mary - Dorothy Gennie - Doris - Juanita Laura

Dancer's Will Be OPEN This Week Thursday, Friday and Saturday Evenings UNTIL 9 O'CLOCK

JOHN, DORIS and JOHN PERRY Edith Kealy - Janet Wiley - Melody Boyer Gwen Guenther - Loretta Doll - Janice Wood

Ads Taken Till 5 p.m. Tuesday

IT'S EASY TO BUY-SELL-RENT-HIRE & FIND WITH

WANT ADS

WANT ADS The Chelsea Standard WANT AD RATES PAID IN ADVANCE...

WANT ADS COUNTRY HOME for sale by owner... WANTED - Milk Cans... CAR & TRUCK LEASING...

WANT ADS HOUSEWIVES - Best part-time job you can find... Custom Slaughtering... Frigid Products...



TIPS 'Guess what I bought in the Standard Want Ads - that we won't have to pay for until next year?'

WANT ADS OTTAWA HITCH EQUIPMENT - Grain equipment: bins, 1,100 to 13,500 bushels... FOR SALE - 2-bedroom, year-around lake-front home...

WANT ADS FOR RENT - 2-bedroom upstairs unfurnished apartment... REFRIGERATION REPAIR MAN...

International Bridge Traffic Up 7.8 Percent... DEFENSE WASTE...

KNAPP SHOES - For cushioned comfort... I AM LOOKING for a person who has management ability... APARTMENT FOR RENT...

SPECIAL Separate Wurlitzer Spectra-Tone speaker in walnut or mahogany... Ai Nalli Music... CAR RENTAL by the day, week, end, week or month...

A-1 USED CARS '66 Galaxie 500... '65 Mustang Hardtop... '65 Plymouth... '64 Corvair Monza... '64 Ford Wagons... '64 Ford 4-Dr. Hardtop... '64 Chev Wagon... '64 Pontiac Convertible... '64 Falcon Wagon... '62 Ford 4-Dr... '62 Chev II 2-Dr... '62 Pontiac Conv... '62 Falcon 2-Dr... '61 Falcon 2-Dr... '61 Fords (3)...

WANT ADS CARPET is the softest, warmest, quietest, prettiest and takes care of easier and faster than any floor you can own... G. G. HOPPER Painting and Decorating Building Contractors... CARPET AND RUGS - Over 500 patterns...

WANT ADS COTTAGE FOR RENT, Jan. 1 through Apr. 30... FOR SALE - Feeder pigs... AIRLESS SPRAY PAINTING... CLOGGED SEWER Reynolds Sewer Service... Electronic Technicians...

Montgomery-Ward Arborland Shopping Center... Home For Sale High on hill, beautiful view... Septic Tanks And Drain Fields... REAL ESTATE Listings Wanted...

Montgomery-Ward Arborland Shopping Center... Home For Sale High on hill, beautiful view... Septic Tanks And Drain Fields... REAL ESTATE Listings Wanted...

NOTICE! Garbage and Rubbish will be picked up Wednesday, Dec. 27 and Wednesday, Jan. 3... Village of Chelsea...

Going Out of Television Sales Business Have a good selection of Admiral Color TVs and Radios... PORTER'S TV 212 Buchanan Street Chelsea, Mich. Phone: GR 5-8380

George's Shoe Repair Shop 2nd Floor above Hilltop Plumbing, 100 Park St. Half Soles & Heels... ELECTROLUX Authorized Sales and Service GA 8-2931

TRUCKS '63 Ford 1/2-Ton Pick-up... '49 Dodge 1/2-Ton Pick-up... '60 Ford 1/2-Ton Pick-up... BEST SELECTION IN TOWN! PALMER FORD GR 5-3271

WANT ADS CARPET AND RUGS - Over 500 patterns... G. G. HOPPER Painting and Decorating Building Contractors... CARPET AND RUGS - Over 500 patterns...

WANT ADS COTTAGE FOR RENT, Jan. 1 through Apr. 30... FOR SALE - Feeder pigs... AIRLESS SPRAY PAINTING... CLOGGED SEWER Reynolds Sewer Service... Electronic Technicians...

REAL ESTATE Listings Wanted Barton Real Estate JOHN PIERSON, Salesman Ph. GR 9-5881... Merry Christmas To All N. H. Miles ALLSTATE AGENT Phone GR 5-8334

REAL ESTATE Do you want a home or cottage on a lake, a farm or country home... Eugene R. Young, Broker Phone 878-3792... Merry Christmas To All N. H. Miles ALLSTATE AGENT Phone GR 5-8334

SWEETLIX 3-IN-1 Block... 1. MOLASSES BLOCK 2. MINERAL BLOCK 3. SALT BLOCK... No other SALT or MINERAL supplement needed... like a loose mineral... BLAESS Elevator Co. Div. of Larowe Feed Co. Four Mile Lake Ph. 479-6511

GREETINGS As Christmas comes to you this year, we warmly wish that it may bring a holy meaning ever deeper, hopes ever higher, and joyous blessings ever richer. Staffan Funeral Home "Funeral Directors for Four Generations"

REAL ESTATE BAR in Chelsea, doing good business. Beer, wine and dance permitted... 10 ACRES of vacant land on pavement, high and dry... LISTINGS WANTED - 22 years of experience... Great Lakes Real Estate 1232 Packard Ann Arbor, Mich. 48104 Phone 769-5630

REAL ESTATE 3 rooms and bath plus utility room... 4 rooms on Sugar Loaf Lake on double lot... 9.85 acres on McKinley... 35 acres on Old US-12 West... Kern Real Estate Phone 475-8563

REAL ESTATE 3 rooms and bath plus utility room... 4 rooms on Sugar Loaf Lake on double lot... 9.85 acres on McKinley... 35 acres on Old US-12 West... Kern Real Estate Phone 475-8563

REAL ESTATE 4 BEDROOMS with 317 feet of frontage on Old US-12 East... ACREAGE on Bush Rd. Also, some on Waterloo Rd... 40 ACRES of vacant land near Waterloo... RUBBISH HAULING Write BILL MOUCH 19711 Doyle Rd., Gregory, Mich. Phone: Gregory 498-2882

REAL ESTATE APARTMENT HOUSE - 3 well-arranged, nicely decorated apartments... INDUSTRIAL SITE - 7 1/2 acres with 745 ft. of railroad frontage... BUILDING LOTS (Buy now - build next spring) OLD US-12, WEST - 1.7 acres, high and dry... RIKER RD. - Near Inverness - Nearly 2 acres at \$3,500... NORTH TERRITORIAL RD. - 2 acres. Lots of maple trees... LAKE-FRONT - Approx. 2/3 acre in all, with frontage on North Lake... ALSO - 15 acres of woods... CLARENCE WOOD BROKER 646 Flinders St. Phone 475-4803

GREETINGS May the spirit of Christmas present bring you everlasting joy and good cheer. We take pride in your friendship and sincerely appreciate your loyalty to us. SCHNEIDER'S GROCERY CARL SCHNEIDER & HOWARD FLINTOFT Millie - Doris - Bud - Ted - Wilbur - Jeff - Kim - Charles - John - Tim

MERRY CHRISTMAS May your Christmas be filled with the warmth of good cheer, good fellowship! ROY D. MILLER Real Estate Broker

Council Briefs

(Continued from page one) Mrs. William Weirich and daughter, Fay Ann were Sunday dinner guests of her son, Rudolph Weirich and family, of Clinton Township because of the tax Consumer's Power Co. All-eyes.

FOUR MILE LAKE

Mrs. William Weirich and daughter, Fay Ann were Sunday dinner guests of her son, Rudolph Weirich and family, of Clinton Township because of the tax Consumer's Power Co. All-eyes.

Varsity Cagers Lose Two...

(Continued from page one) quarter, Chelsea and Lincoln exchanged the lead several times with Lance Burghardt and Jack Risner leading in the scoring for Chelsea. Chelsea held a seven-point lead at the end of the first quarter, with the score 21 to 14. But Lincoln caught up early in the second quarter and soon went out in front of the Bulldogs.

DEATHS

Mrs. Charles Briston Native of England Dies Following Long Illness Mrs. Beatrice Briston, 85, of 220 Jackson St., Chelsea, died Sunday, Dec. 17 in St. Joseph Mercy Hospital after a long illness. She had entered the hospital about three weeks ago.

Mrs. Charles Briston

Mrs. Beatrice Briston, 85, of 220 Jackson St., Chelsea, died Sunday, Dec. 17 in St. Joseph Mercy Hospital after a long illness. She had entered the hospital about three weeks ago.

Mrs. W. Finkbeiner

Short Illness Fatal to Life-Long Lima Resident Mrs. Bertha K. Finkbeiner, 85, of 570 N. Steinbach Rd., Lima township, died Sunday, Dec. 17, in St. Joseph Mercy Hospital, following a short illness.

CHELSEA ART CENTER Distinctive Gifts for Special People New Selection of Nancy Hard Barn Board Paintings Jewelry - Handicrafts S. Main at Old US-12

TODAY'S THOUGHT By LOUIS BURGHARDT Our Christmas prayers center on the celebration of the birth of the Prince of Peace. As we express affection to Him, we should realize we need His guidance more than ever.

Police Report

(Continued from page one) Vernon Samons, arrested by Chelsea police for embezzlement from Prigid Products S.p.t. 20, was given a sentence of five years probation and was ordered to pay \$155 fine and costs and \$1,513.77 restitution.

Varsity Cagers Lose Two...

(Continued from page one) quarter, Chelsea and Lincoln exchanged the lead several times with Lance Burghardt and Jack Risner leading in the scoring for Chelsea. Chelsea held a seven-point lead at the end of the first quarter, with the score 21 to 14.

Mrs. Charles Briston

Mrs. Beatrice Briston, 85, of 220 Jackson St., Chelsea, died Sunday, Dec. 17 in St. Joseph Mercy Hospital after a long illness. She had entered the hospital about three weeks ago.

Mrs. W. Finkbeiner

Short Illness Fatal to Life-Long Lima Resident Mrs. Bertha K. Finkbeiner, 85, of 570 N. Steinbach Rd., Lima township, died Sunday, Dec. 17, in St. Joseph Mercy Hospital, following a short illness.

HERE IS A PRACTICAL CHRISTMAS GIFT FOR THE MAN WHO ALREADY OWNS A WATCH. SPACEMATE™ is the only watch with luminous indicators and hands. Rust alligator strap, \$200.00

Varsity Cagers Lose Two...

(Continued from page one) quarter, Chelsea and Lincoln exchanged the lead several times with Lance Burghardt and Jack Risner leading in the scoring for Chelsea. Chelsea held a seven-point lead at the end of the first quarter, with the score 21 to 14.

Mrs. Charles Briston

Mrs. Beatrice Briston, 85, of 220 Jackson St., Chelsea, died Sunday, Dec. 17 in St. Joseph Mercy Hospital after a long illness. She had entered the hospital about three weeks ago.

Mrs. W. Finkbeiner

Short Illness Fatal to Life-Long Lima Resident Mrs. Bertha K. Finkbeiner, 85, of 570 N. Steinbach Rd., Lima township, died Sunday, Dec. 17, in St. Joseph Mercy Hospital, following a short illness.

Winans Jewelry Store Beautiful Plaids or Solid Red and Navy. Sizes 10 to 20. Pendleton Sportswear

Varsity Cagers Lose Two...

(Continued from page one) quarter, Chelsea and Lincoln exchanged the lead several times with Lance Burghardt and Jack Risner leading in the scoring for Chelsea. Chelsea held a seven-point lead at the end of the first quarter, with the score 21 to 14.

Mrs. Charles Briston

Mrs. Beatrice Briston, 85, of 220 Jackson St., Chelsea, died Sunday, Dec. 17 in St. Joseph Mercy Hospital after a long illness. She had entered the hospital about three weeks ago.

Mrs. W. Finkbeiner

Short Illness Fatal to Life-Long Lima Resident Mrs. Bertha K. Finkbeiner, 85, of 570 N. Steinbach Rd., Lima township, died Sunday, Dec. 17, in St. Joseph Mercy Hospital, following a short illness.

Every SANTA Should Give A Pendleton 49'er To that Special Gal Beautiful Plaids or Solid Red and Navy. Sizes 10 to 20. Pendleton Sportswear

HELLER ELECTRIC Licensed Electrical Contractors ALL TYPES OF WIRING (No job too big or too small) DAY OR NIGHT CALL GR 9-3816 20640 Sager Rd., Chelsea

WORLD BANKS ON DOLLAR Frankfurt, Germany - Heads of banks from Belgium, Britain, West Germany, Italy, the Netherlands, Switzerland and the United States have pledged full support to the United States in its commitment to defend the dollar rate against heavy buying gold.

Debuté Team... will face debaters from schools in several towns, including Ann Arbor, Ypsilanti and Monroe. A team must be defeated twice before it is eliminated from the district tournaments.

Strieter's Christmas Store for Men Beautiful Plaids or Solid Red and Navy. Sizes 10 to 20. Pendleton Sportswear

Greetings In the holiday spirit we take time out to thank our customers for their loyalty, friendship and patronage throughout the year. It's always our joy to serve!

Wishing You A Very MERRY CHRISTMAS BROWN 'N' SERVE. Rolls 2 doz. 49c Crackers box 30c Large Eggs doz. 42c Tissue 4 rolls 33c We have a complete assortment of bulk fancy nuts in the shell. BULK HARD & FILLED CANDIES French Cremes & Chocolate Drops KUSTERER'S FOOD MARKET DIAL GR 9-3331 WE DELIVER

Standard Ads Are a Good Shopping Guide! BUYING A HOUSE? Ask about our low-cost Mortgage Financing plan. EACH DEPOSITOR NOW INSURED for a Maximum of \$15,000 with the Federal Deposit Insurance Corp. CHELSEA STATE BANK Member Federal Reserve System Member Federal Deposit Insurance Corp.

Strieter's Christmas Store for Men

F. & M. FINE FOODS KERMIT and BESSIE SHARP Leslie - Sandra - Velma - Helen - Denise - Gaye - Thelma - Nance - Larry - Ron

CHELSEA STATE BANK Member Federal Reserve System Member Federal Deposit Insurance Corp.

How To Make 'Apple People,' for Family Fun

Fun for the family on Christmas afternoon can start with peeling an apple—and making a doll.

So says Mrs. Mona Belle Fahney of Springfield, Mo., who ought to know. From the same start, peeling an apple, Mrs. Fahney has won renown as a designer and creator of apple dolls. Making the dolls is a perfect in which she excels; the art and enthusiasm of her husband, Ben, and her daughters Dorothy.

Apple dolls are in the tradition of making dolls from material at hand, and they reflect the home craftsmanship of early America. Though craft specialists have revived the custom of making dolls from bits, they are still quite a novelty. And, says Mrs. Fahney, apple dolls will always be unique, because no two heads turn out the same.

Each though the features are generally carved in fresh apples, the final result cannot be known until the apple heads have completely dried.

In the Fahney family, wire bodies for the dolls are constructed by Mr. Fahney, while the apple heads are carved by Dorothy Murphy, a portrait artist who lives with Mrs. K.L. Murphy.

Mrs. Fahney completes the dolls with unusual costumes made according to patterns, which she designs.

Whatever the division of crafts, any family group can easily make apple dolls for holiday fun and wear-round enjoyment, maintains Mrs. Fahney.

She offers the following instructions.

Select firm apples—they make the best dolls. Peel apples and carve "faces" for doll heads.

Put carved apples on sticks and insert sticks into holes punched in a coffee can or other container. Set this in a granite ware kettle.

Place a lighted sulphur candle in a small dish and set it on a mound of damp sand, inside the kettle and alongside the apples.

Cover kettle and leave apples inside until sulphur is burned up. This helps preserve color of the apples, and kills any insects which might be present.

Remove apples and set in dry indoors. This usually takes two weeks or longer. To further preserve the apple color, add clear nail polish to the faces, immediately after apples are dry.

Apple doll bodies can be constructed from wire and bits of wood. The wire should be sturdy, but flexible enough for arms and legs that can be bent at will, or made to stand or sit.

Wire body, arms and legs are covered with cotton batting. Twist thread around batting and fasten to hold firmly.

Attach apple head, still on stick, to body, securing with wire and glue.

For hair, white yarn is glued to the apple head.

Mrs. Fahney recommends white-headed floral pins for eyes, cut off the point, push pin into eye socket and paint the iris.

Arms, hands and feet can be painted with flat white tinted with oil color for flesh tones, on Melville Road in Springfield.



APPLE DOLLS become characters of olden times, as created and dressed by Mrs. Mona Belle Fahney of Springfield, Mo. She favors old-fashioned prints for dresses, and bonnets with open crowns, to show a bun of yarn "hair." Apple men wear dark suspender pants, bright shirts and scarves. Musical instruments were made by Ben Fahney.



Toys, Dolls Always Bring Delight To 'Children' of All Age Levels

Modern Marvels Have Their Rivals In Wondrous Playthings of Past

Under the Christmas tree of the wondrous toys and dolls that bring delight to children of all ages, the fashion doll displays her wardrobe and the talking doll shows off her vocabulary.

Side by side with the dolls are toys equally modern. The model train winds its way through a realistic model town, while electrically powered miniature racing cars execute exciting maneuvers along the track.

Recent years have brought great changes in the variety and interest of toys and dolls—so much so that the child's imagination is kept busy with the possibilities of play.

Since ancient times, the doll has played a dual role, as toy and as religious symbol. Today's ceramic dolls, displayed as part of the manger scene in churches and homes, have historical counterparts in the dolls used as religious figures, or dolls, by primitive peoples.

Dolls fashioned of clay, stone or bone have been unearthed by archaeologists from tombs thousands of years old. Their presence in the tombs is thought to mean that the dolls were intended for the dead.

The word "doll" in fact derives from the Greek word, "idol," which means "idol."

Historians say that, before the birth of Christ, Egyptian sun worshippers idolized a doll-like figure of a god at the season of the year was celebrated as Christmas. The figure was meant to symbolize the "birth" of the sun in the winter.

French women, famed for their fashions, gave attention to dressing their own as "fashion babies," a concept about 500 years ago, the "fashion baby" in later years, were ambassadors for French fashion.

In the early American Colonies, the beginning of the arrival of a "fashion baby" from France was greeted with great interest.

have sparked inventions, witness the telephone, favorite toy of the century ago. Inspired by foot-powered hobby horses of the early 1800's, the velocipede in its turn became the forerunner of the bicycle.

Toys today reflect modern living—and so did toys of long ago in their day. For instance, toy racing cars came onto the gift market early in this century, when the automobile industry was getting its start.

As for dolls, the electronically-powered walking, talking wonders of today are only the latest development in a long line of magical, marvelous dolls. Yes, modern dolls are fabulous in their complexity, but dolls of the 17th and 18th centuries were frequently as simple as a wooden block.

Since ancient times, the doll has played a dual role, as toy and as religious symbol. Today's ceramic dolls, displayed as part of the manger scene in churches and homes, have historical counterparts in the dolls used as religious figures, or dolls, by primitive peoples.

Dolls fashioned of clay, stone or bone have been unearthed by archaeologists from tombs thousands of years old. Their presence in the tombs is thought to mean that the dolls were intended for the dead.

The word "doll" in fact derives from the Greek word, "idol," which means "idol."

Historians say that, before the birth of Christ, Egyptian sun worshippers idolized a doll-like figure of a god at the season of the year was celebrated as Christmas. The figure was meant to symbolize the "birth" of the sun in the winter.

French women, famed for their fashions, gave attention to dressing their own as "fashion babies," a concept about 500 years ago, the "fashion baby" in later years, were ambassadors for French fashion.

In the early American Colonies, the beginning of the arrival of a "fashion baby" from France was greeted with great interest.

YOUR INCOME TAX

Editor's Note: This column of questions and answers on federal tax matters is provided by the Detroit District office of the U. S. Internal Revenue Service and is published as a public service to taxpayers. The column answers questions most frequently asked by taxpayers.

Q. I do some work at home for my boss in an office which takes up about 10 percent of my house space. Does this mean I can take 10 percent of my house expenses as a business deduction?

A. Several requirements have to be met before a business deduction can be taken for office space in a home or apartment. To qualify for any deduction, you must establish that you are required to provide your own space and facilities as a condition of your employment and that you regularly use this space for business purposes.

You also must be able to show the portion of your home used for this purpose and the amount of time it is so used.

If the office space accounts for 10 percent of your total space as you stated and other conditions are met, then you may take 10 percent of such items as rent, heat, light, real estate taxes and mortgage interest. Depreciation of the office portion of a home is also deductible.

Expenses attributable only to the personal portion of a house or apartment are not deductible. If you use the office portion only half the time for business purposes then you may deduct only 5 percent of your house expenses as a business deduction.

Q. How long do I have to hold stock before I can treat profits made on it as a long-term capital gain?

A. The profits on the sale of stock or other capital assets held more than six months are treated as long-term capital gains.

Q. Can I deduct fees paid to an employment agency?

A. Yes, fees paid for obtaining employment are deductible if you itemize your expenses.

Q. I pay someone to look after my children until I get home from work. May I deduct this expense?

A. Child care expenses may be deducted when certain conditions are met. Be sure to check the instructions that come with the tax forms. They explain what you have to do to qualify for this deduction.

Q. My ex-wife has custody of our children but I claim them as

dependents. Do I still take their withholding exemptions?

A. Yes, you can if they qualify as your dependents. Generally the withholding exemptions that will be allowable on your income tax return.

Q. My company reimbursed me for a trip my wife and I took to find a place to live on my new assignment. On the check I received taxes were taken out. Why was that?

A. The amount you received is classified as wages and not a reimbursement for deductible moving expenses. When you actually move to the new location, the unreimbursed cost of transporting you, your family and your household goods may well be a deductible moving expense. The cost of meals and lodging while traveling to your new home may also be deductible.

Q. I pay someone to look after my children until I get home from work. May I deduct this expense?

A. Child care expenses may be deducted when certain conditions are met. Be sure to check the instructions that come with the tax forms. They explain what you have to do to qualify for this deduction.

Q. My ex-wife has custody of our children but I claim them as dependents. Do I still take their withholding exemptions?

A. Yes, you can if they qualify as your dependents. Generally the withholding exemptions that will be allowable on your income tax return.

WHO KNOWS?

1. Which is longer, the Panama or Suez Canal?
2. Which continent has no desert areas?
3. What is the nautical unit of speed?
4. What famous American colonist was imprisoned for refusing to remove his hat in court?
5. What sea is sometimes called the Gulf of Venice?
6. How many guns are used in a national salute?
7. Why was the Russian emperor called a Czar?
8. What is the 18th Amendment?
9. When was the New York Stock Exchange founded?
10. When did Edward VIII of England abdicate the throne?

(Answers elsewhere on this page)

ON U. S. GOLD STANDARD

Reacting to the devaluation of the British pound, President Johnson reported to the nation that he could "reaffirm unequivocally the commitment of the United States to buy and sell gold at the existing price of \$35 an ounce."

HAS MILLIONS BUT WORKS

Clearwater, Fla.—Although he has inherited millions, Charles D. Belcher continues to work as a waiter for \$4 a day. Belcher said he would continue to work until his lawyers make final settlement. He plans to study art and take care of his mother.

NEW POWERFUL MISSILE

Moscow—A Soviet missile commander has claimed the Union has developed orbital "clear missiles" with devices would enable them to "through an enemy's defenses" and "was made to visit Missle Forces Day."

Who's Pelsnickle? In Doll Library He Shows Why Naughty Children Dread His Christmas Time Visits

Where there are dolls, there's the spirit of Christmas. In the Pryor International Doll Library at Greenwich, Conn., there are more than 8,000 dolls, and naturally, many of them suggest Christmas in a very special way—from creche figures that symbolize the religious meaning of the holiday to a jolly Santa doll who wrinkles his dried-apple face in a smile that sums up all the joys of the season.

From a Christmas-season point of view, one of the most interesting dolls is a figure representing "Pelsnickle." Though little known to modern celebrants, Pelsnickle holds an important place in holiday lore. According to legend, he accompanied St. Nicholas as his servant and, while St. Nick rewarded good children with gifts, Pelsnickle had the unenviable task of punishing naughty boys and girls with "gifts" of lumps of coal and switches.

The Doll Library's Pelsnickle sports a Santa Claus whiskers, wears a coat of shaggy fur and holds a bundle of switches.

BOEING GETS AWARD

The National Aeronautics and Space Administration has given the Boeing Company \$1,811,611 in incentive awards for the successful fourth and fifth Lunar Orbiter missions.

GET WITH IT! ONLY 3 SHOPPING DAYS TIL CHRISTMAS

Illustration of a man carrying a large sack, possibly representing a Santa Claus figure or a person carrying gifts.

Illustration of a man in a suit, possibly representing a Santa Claus figure or a person carrying gifts.

Illustration of a man in a suit, possibly representing a Santa Claus figure or a person carrying gifts.

Illustration of a man in a suit, possibly representing a Santa Claus figure or a person carrying gifts.

Illustration of a man in a suit, possibly representing a Santa Claus figure or a person carrying gifts.

Church bells ring out across the land on Christmas Day, proclaiming to all the world the coming of the Holy Child and the glory of His birth. And to our fine customers, we wish to proclaim a warm holiday "thank you" for your faithful patronage.

The Chelsea Post Office Staff

Clinton Upholstering & Furniture Co.
We reupholster your old furniture like new.

FREE ESTIMATE - PICK-UP AND DELIVERY

NEW FURNITURE MADE TO ORDER
Financing Available
36 mo. to pay - No money down - No payment for 45 days.

SPECIAL
Orthopedic-Type Mattress & Box Spring Set
Regular \$99.95. **Special—Now \$79.95**

124 W. Michigan Ave., Clinton Ph. 456-4850

Howell Livestock Auction
Every Monday at 2 p.m.
Southeastern Michigan's largest and most complete Auction Market.
For Trucking Information Call Howell 546-2470

Light Glare Study
SAN ANTONIO, TEX.—Southwest Research Institute engineers are studying ways to minimize the effect of headlight glare upon drivers approaching each other at night. The object of study is to find a means to reduce the glare without reducing the power of the headlight.

Discount Rate Up
The Federal Reserve Board has announced an increase in its discount rate from 4 to 4½ percent. The action came as a result of the British pound devaluation from \$2.80 to \$2.40.

MEAT INSPECTION

American Meat Institute... Federal... Senate... Agriculture... This... all states... two... federal... would not... fore...

DRUGS AND MEDICINE

The Senate has rejected a plan... to include the cost of prescription... drugs in medicare insurance... coverage... Senate... Republican... federal government... couldn't afford... its share of the \$990 million... estimated cost for the first year.

EARLY SPANIARDS considered the orchid to be sacred. They thought it looked like the holy dove that flew down at the baptism of Christ.

CUB SCOUT NEWS

PACK 415— Cub Scout Pack 415 held its Christmas meeting Sunday, Dec. 17, at the K. of C. Hall. The meeting opened with the flag ceremony, for which the Cub Scouts acted as color guards. Cub Master Cecil Clouse presided over the meeting, which included the singing of Christmas carols by the Cubs and their parents.

James Branham, a Boy Scout leader from Troop 425, showed and identified the activities connected with many of the Boy Scout awards.

Cubmaster Cecil Clouse presented the following awards: Francis Grohnet, engineering badge as a Webelos Scout; David Clouse, one silver arrow; Dennis Bauer, one silver arrow; Donnie White, one gold arrow and two silver arrows; Joe Branham, Bear book; and Timmy Bassett, Bobcat pin.

The following Scouts in the Robert rank received Indian headbands: Timmy Franks, Gregg Harok, Terry Marsh and Timmy Bassett.

In the Wolf rank, David Pletcher, Danny Cobb, David Stoll, Joe Branham, Tom Taylor, Dennis Bauer, Mark Seyfried, Mike Seyfried and Donnie White each received one feather.

In the Bear rank, David Clouse was awarded two feathers. Webelos Scouts receiving three feathers each were Francis Grohnet and Terry Ellenwood.

Santa Claus made an appearance and passed out gifts to the Scouts and parents, after which refreshments were served.

The meeting adjourned with the retiring of the flags.

PACK 155— Cub Scout Pack 155 met Wednesday, Dec. 13, at the home of Mrs. Richard Kern assisting. All the members were present.

The flag ceremonies were led by Randy Case and Scott Otto. The Cubs recorded their achievements to date on the charts.

Wrapping paper for their presents was made with string and paints. After decorating the paper, the boys wrapped the presents. Then they went outside and played basketball.

Scott furnished refreshments and Randy brought a special birthday treat.

There will be no further den meetings until Jan. 3.

Scott Otto and Mark Kern, scribes.

Wednesday, Dec. 13, Cub Scouts of Den 2, Pack 455 opened the meeting by doing physical exercises and then had the flag ceremony by Ted Speers, David Popovich, Steve Bowen and Randy Guenther.

The boys gave the Christmas gifts they are making their fathers the second coat of varnish. They finished the Christmas gifts for their mothers and took them home.

They are making Santa figures for Christmas decorations. They practiced songs they will sing at the Christmas pack meeting.

At the Dec. 6 meeting the flag ceremony was in charge of David Popovich, Randy Guenther, Don Oesterle and Mike Bowen.

David Popovich brought the refreshments for that meeting. Don Oesterle, scribe.

PACK 435— Cub Scout Pack 435 held a combined pack meeting and Christmas party at Inverness Country Club Monday, Dec. 18. This was the first meeting of the reorganized pack, and was opened with presentation of the Colors by the Cub Scout Honor Guard.

Cubmaster Dick Kalmbach then introduced the new Pack Committee, consisting of Ron Kell, chairman; David Longworth, secretary-treasurer; and committee members Clyde Myers, Fred Klink, and Bill Wade.

As before, the sponsoring institution is Local 1284 UAW, and the institutional representative is Louie Foreman.

Cubmaster Kalmbach also introduced co-mothers, Mrs. Stahl and Mrs. Dick Kalmbach, and den mother, Mrs. Myers.

The meeting continued with Christmas carols led by Fred Klink and a selected group of parents and Cub Scouts.

The scouts then decorated the Christmas tree with ornaments and presents which they had made for their parents in den meetings.

Cubmaster Kalmbach presented service pins and new books to Cubs Ron Kell, Kent Longworth, and Doug Kalmbach. He and the Cub Scouts also inducted the following boys into the Pack's new Robert Cub Scouts: Jim Stahl, Steve Klink, Karl Steinaway, Brad Myers, Scott McClain, and Doug Eisle.

Following retirements of the Colors, the Cubs presented the Christmas presents to their parents, and refreshments of soft drinks, cookies, ice cream, and coffee were enjoyed together with games for the children and a social hour for the parents.

The next pack meeting will be held Thursday, Jan. 25, at North Elementary school; the theme of the month will be communications.

The pack committee meeting will be held Thursday, Jan. 11 at the home of Clyde Myers.

Any parents living in the northeast section of Chelsea who are interested in having their boys join the Cub Scouts can obtain further information by calling Ron Kell or Dick Kalmbach.

PACK 415— Cub Scout Den 5, Pack 415 met at the home of den mother, Mrs. Cecil Clouse at Waterloo. The Cubs opened with the flag salute led by den chief, Doug Schrotenboer, then wrapped the gifts that they had made for their mothers and dads. They also played several games.

Terry Marsh furnished refreshments. The meeting closed with the living circle.

Mike Seyfried, scribe.

Conservation Law Violations Heard

Appearing before Sylvan township Justice C. A. Rogers, Thomas A. Chapman, 18, of Detroit, pleaded guilty to possession of a loaded 30-30 caliber rifle in a car during deer season. He paid \$30 fine and costs.

Russell G. Gardner, 24, of Livonia, pleaded guilty to borrowing and using another person's deer hunting license; he paid \$35 fine and costs.

George D. Dekle, 23, of Detroit, paid fine and costs of \$18 for possession of a 22-caliber rifle during deer season in Region III.

Christmas Tree Thefts Make Expensive Buy

Three college students with nearly \$30 among them were discovered at 9:45 a.m. Tuesday, Dec. 19, by Deputy Weiss of the Washtenaw County Sheriff's Department and Dexter Police Chief Robert Taylor, immediately after removing a tree from property owned by Sloan Nursery of Detroit and located at 1875 Baker Rd.

When asked why they had stolen the tree, they stated that they were "taking it home."

The students were identified as Marianne Donnelly, 19, of 1588 Morrill St., Detroit, a student at Henry Ford Community College; David Lee Skillman, 20, of 13530 Backus, Southgate, a student at Wayne State University; and Patrick W. McCarthy, 19, of 2310 Bloomfield, Melvindale, a student at Eastern Michigan University.

The three were arraigned at Dexter police station, where they pled guilty and were fined \$30, \$5 costs or seven days in jail (each) by Justice of Peace, Earl Deletky.

(If sold as a Christmas tree, it could have been purchased for about \$51.)

They were taken to Washtenaw County Jail to await posting of their bond.

SPACE CRAFT READED

Cape Kennedy, Fla.—The space agency and the prime contractor, Grumman Aircraft Engineering Company have placed the first Lunar Module atop a Saturn I rocket on launch pad 37B. Launching time is set for mid-January and the flight scheduled to last 6 1/2 hours.

HOUSING AID

The Government has announced a \$125-million program to improve low-rent public housing projects and to improve housing management. Secretary Robert C. Weaver of the Housing and Urban Development said local authorities would have to apply for the modernizing funds.

DIRKSEN ON TAX HIKE

Senator Republican Leader Everett M. Dirksen has predicted President Johnson's proposals for a tax hike would not clear Congress this session. He indicated that Republicans will help pass a dozen major administration proposals before adjourning.

ARMY TESTS NEW BOOT

The Army plans to field test in Vietnam a new armored boot designed to protect infantrymen from crippling wounds resulting from Communist land mines. Mines and booby traps in Vietnam have caused a high rate of deaths and wounds.

Don't Cook Turkey Rolls Same as Bird

Cook a whole turkey to an internal temperature of 185 degrees, and it will be tender and juicy. Cook a turkey roll to the same temperature, and it will be tough and dry.

Recent research by a Michigan State University food scientist shows the "ideal" range for cooking turkey rolls is 160 to 165 degrees.

As internal cooking temperature increases above this level, the dark meat becomes more tender but it also becomes drier and less palatable. The white meat becomes both drier and tougher.

At an internal temperature of 190 degrees, the white meat becomes tougher than dark meat, according to Prof. L. E. Dawson, MSU food scientist, who conducted the experiments.

Our research shows that the nutritional value of the meat essentially does not change as cooking temperatures are increased, but the meat just doesn't taste as good," said Dr. Dawson.

Studies of meat composition showed basically no changes in protein content as cooking temperatures were increased.

In our experiments, we set the oven temperature at 225 degrees and cooked to an internal temperature of 160 degrees to get the best combination of juiciness and tenderness.

Tenderness and juiciness were determined in the MSU study in laboratory experiments and reaffirmed in consumer taste panels.

Dr. Dawson pointed out that turkey rolls must be cooked to at least 160 degrees before they can be intended as a roast according to the U. S. Department of Agriculture. This temperature is high enough to kill any pathogenic bacteria that might be in the meat.

Baking the Pie

"The devil does not show himself in Cornwall at Christmas time lest he should be baked in a pie."

This old English saying takes its humorous inspiration from the wide variety of ingredients actually used in the mince pies and other Christmas pies of early England, according to the editors of The New Book of Knowledge.

One 14th-century recipe for a Christmas pie included: a pheasant, a hare, a capon, two partridges, two pigeons, two rabbits, beef meat balls, eggs, pickled mushrooms, seasonings and spices, all in a pastry crust.

Modern miracle: The manner in which Santa Claus gets into some homes.



We've pecked in upon the setting for your very festive Christmas and couldn't help adding our Thank You for your fine patronage and a Merry Christmas greeting to all

RICK'S MARKET
HAROLD and RUTH

Joyous wishes for a happy Holiday. Sincere thanks to our many friends.

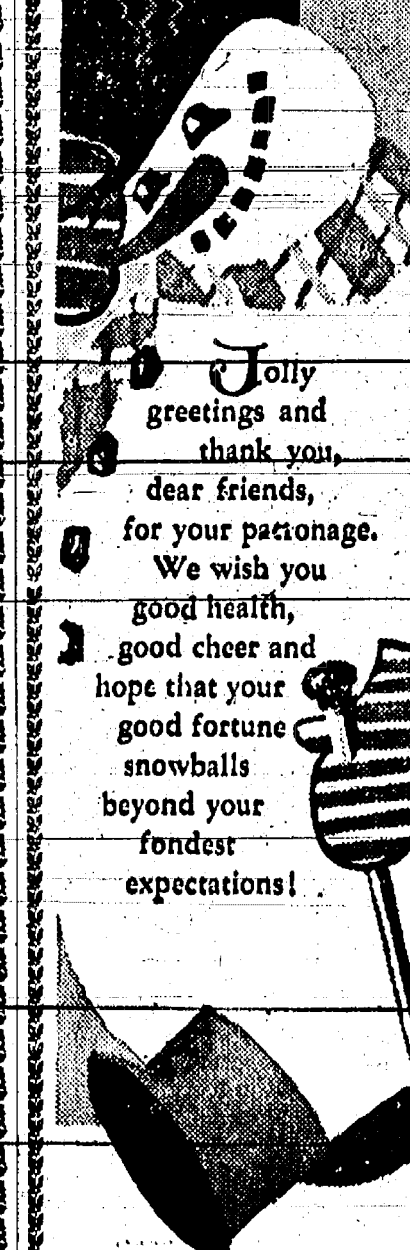


Daniels Motor Sales, Inc.
Graham - Ted - Bocky - George - Larry
Doug - R. V. - Geraldine

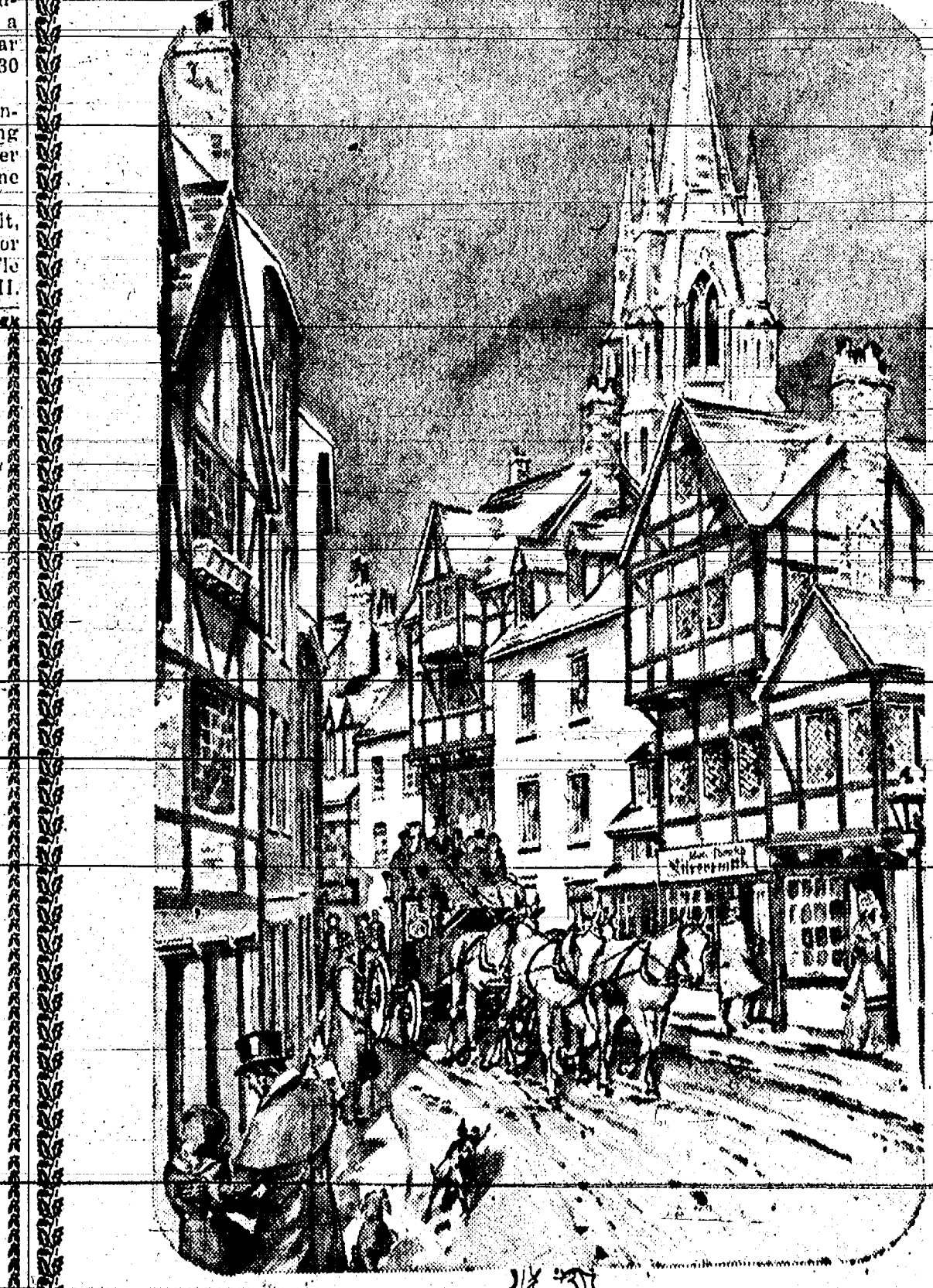


Merry Christmas. We're singing a song of cheery Yuletide wishes for you and your family, filled with our warm thanks for your loyalty, good will and patronage throughout the year. Hoping you all have a gay holiday!

For Your Convenience We Will Open Until 9 p.m. Thru Sat., Dec. 21-22-23
BUDGET-WISE STORE



Jolly greetings and thank you, dear friends, for your patronage. We wish you good health, good cheer and hope that your good fortune snowballs beyond your fondest expectations!
Merry Christmas DON'S STANDARD SERVICE



CHELSEA STATE BANK

Sincere Good Wishes
We hope that you spend your holiday happily, in the company of those you hold dear. May you enjoy the peace, love that is Christmas!

WATERLOO GARAGE
CHARLIE - LEN - GLENN

IT'S CHRISTMAS

May the joyful spirit of the first Christmas ring in your heart today.

SMITH'S MOBIL SERVICE

Community Calendar



Chelsea Chamber of Commerce, Wednesday, Dec. 27 at 4:15 p.m. Annual Christmas dinner at Bill Chelsea, 1115 S. Main St. Advance reservations are urged to contact Dr. Gene Miller, 475-7113.

Shop at Chelsea Art Center for annual gifts, jewelry and handicrafts and Barn Board paintings, S. Main at Old U.S. 12, Chelsea Art Center, Lucile D. Musterson.

Servicemen's Corner

Thomas J. Tuttle Earns Army Promotion

Thomas J. Tuttle, 2nd Lt., 1st Lt., 2nd Lt., 3rd Lt., 4th Lt., 5th Lt., 6th Lt., 7th Lt., 8th Lt., 9th Lt., 10th Lt., 11th Lt., 12th Lt., 13th Lt., 14th Lt., 15th Lt., 16th Lt., 17th Lt., 18th Lt., 19th Lt., 20th Lt., 21st Lt., 22nd Lt., 23rd Lt., 24th Lt., 25th Lt., 26th Lt., 27th Lt., 28th Lt., 29th Lt., 30th Lt., 31st Lt., 32nd Lt., 33rd Lt., 34th Lt., 35th Lt., 36th Lt., 37th Lt., 38th Lt., 39th Lt., 40th Lt., 41st Lt., 42nd Lt., 43rd Lt., 44th Lt., 45th Lt., 46th Lt., 47th Lt., 48th Lt., 49th Lt., 50th Lt., 51st Lt., 52nd Lt., 53rd Lt., 54th Lt., 55th Lt., 56th Lt., 57th Lt., 58th Lt., 59th Lt., 60th Lt., 61st Lt., 62nd Lt., 63rd Lt., 64th Lt., 65th Lt., 66th Lt., 67th Lt., 68th Lt., 69th Lt., 70th Lt., 71st Lt., 72nd Lt., 73rd Lt., 74th Lt., 75th Lt., 76th Lt., 77th Lt., 78th Lt., 79th Lt., 80th Lt., 81st Lt., 82nd Lt., 83rd Lt., 84th Lt., 85th Lt., 86th Lt., 87th Lt., 88th Lt., 89th Lt., 90th Lt., 91st Lt., 92nd Lt., 93rd Lt., 94th Lt., 95th Lt., 96th Lt., 97th Lt., 98th Lt., 99th Lt., 100th Lt.

TOPS (Take Off Pounds Sensibly) meetings are held every Wednesday at 12:30 noon at 902 McKinley, Chelsea. Women or girls interested in joining this club may call 678-0001 or 475-4551.

American Legion and Auxiliary hospital equipment available by contacting Eugene Martin, 475-3057, after 4 p.m. or Mrs. Diane Hall, 475-8130 after 5:30 p.m.

Sewing every Tuesday at Karpis House. Sewers needed; also, sheet, blanket. Cards Thursday afternoon.

BIRTHS

Inquiries regarding the Chelsea blood bank may be directed to Harold James of Central Fibre Products in the event that Mrs. Dadey Holmes is unavailable.

Teen Democrats Name Officers

Teen Democrats held their election of officers at the Town Hall Tuesday, Dec. 12. The new slate of officers includes Linda Morkel as president, Guy Foyt as vice-president, Susan Farmer as secretary and Debbie Stinchfield as treasurer.

Church Programs

St. Paul church will have a full schedule of events on Dec. 24 including Sunday school, Christmas parties at 2:15 a.m., a candle-light and Communion service at 8 p.m., during which the Rev. Warner Siebert will tell the story "The Other Wise Man" by Henry Van Dyke, and a midnight Communion and Communion service at 11 p.m. featuring four anthems by the combined high school and senior choirs.

No Rec Basketball

There will be no Saturday recreation basketball for the next two Saturdays because of Christmas vacation and the lack of available instructors for those dates.

The MSU Pewabic Pottery in Detroit has opened its doors to the public for the first time in six years, with an exhibition and sale, Nov. 13-Dec. 22.



RICHARD ALLEN

Former Chelsea Resident Enlists For Army Duty

Richard Allen, a former resident of Chelsea, has enlisted in the U.S. Army. He is currently attending basic training at Ft. Leonard Wood, Mo.

Richard, a 1963 graduate of Chelsea High School, recently completed a four-year course at Cleary College, where he majored in industrial management. He is the son of Riverview residents, Mr. and Mrs. Louis W. Allen, who formerly lived at 13525 Old U.S. 12 East.

Upon completion of his basic training, Pvt. Allen will be assigned to the Army Security Agency.

Church Programs

The four choirs of St. Paul church will go caroling tomorrow night.

Christmas cards and will use the stamp money saved for a charitable project. Jeff Parsons has been playing a trumpet introit for each of the Ave St. worship services.

St. Paul church's full schedule of events on Dec. 24 includes Sunday school, Christmas parties at 2:15 a.m., a candle-light and Communion service at 8 p.m., during which the Rev. Warner Siebert will tell the story "The Other Wise Man" by Henry Van Dyke, and a midnight Communion and Communion service at 11 p.m. featuring four anthems by the combined high school and senior choirs.

A choral presentation at 11:30 p.m. will precede the traditional Midnight Mass Christmas Eve at St. Mary's Catholic church. Masses at 6:30 a.m., 8 a.m., 10 a.m. and 11:30 a.m. will be offered Christmas day.

First Assembly of God church will have a family Christmas program at 7 Christmas Eve. A Sunday school recitation will be followed by music sung by the youth choir and the Patrick girls' choir. The program is directed by Mrs. Earl Willis, Jr., church pianist. The program in turn will be followed by a gift exchange for the children and a fellowship gathering in the church social center.

Waterloo Village church Sunday school will present its annual Christmas program of recitations and singing at 7 p.m. Christmas Eve.

Gambles

The Friendly Store

LAST MINUTE Gift Ideas

BUY NOW ON TIME!

Santa's Special

'Road America'

Race thrills with a Cheetah and Ferrari 1/32 scale models, track and power pack.

\$19.95

NO MONEY DOWN

Santa's Special

Cash Register

A lulling tune plays as child rocks. Choir is hardwood with light maple finish. 21" H.

Regular \$3.49

\$2.33

Santa's Special

Musical Rocker

Ring up sales from 1¢ to \$1.00! Make change with metal play money! Heavy steel, 7 1/4" high.

Regular \$7.44

\$5.97

Santa's Special

Gift Wrap Pak

Extra wide—extra long. Exciting colors and designs. Eight 26 x 50 1/2 in. rolls.

99¢

Your Choice! HIGH INTENSITY OR FLUORESCENT LAMP

\$7.95

Choice of 2 contemporary styles for desk or table. Both in black, brown or green.

7-PIECE DESK ENSEMBLE

\$49.95

No Money Down

Modern lined oak or walnut finish desk has 5 roomy drawers, matching chair and 5-piece blotter set.

Santa's Special

MONOPOLY

Challenging favorite for generations. See who can gain control of biggest empire.

2.97

Modern HI-BACK RECLINER

Luxuriously comfortable Styleform padded with upholstery of expanded vinyl that looks and feels like fine leather. Extra-high back gives greater reclining comfort. Modern tapered back; slitch trim accents.

\$69.95

No Money Down \$1.50 Per Week Payable Monthly

Buy on Time! 7 x 35 Binoculars

• BASEBALL
• FOOTBALL
• BIRD WATCHING

Enjoy front-row viewing always with the precision lens magnifying 7 times. 341-ft. field of view. Genuine pigskin field case. Budget terms!

\$33.95

Santa's Special

BOOBY TRAP . \$2.57

Spring Bar Game, one false move and watch out. Reg. \$3.38

ART PODGE . \$4.88

The easy-to-do decoupageing kit. Anyone can make prints look like oil paintings in 30 minutes. Reg. \$6.98

COLL HOUSE . \$6.87

Reg. Price \$9.88

SUNBEAM - "COURIER" I

1 1/2 h.p. vacuum cleaner. REGULAR \$49.95

\$44.95

SUNBEAM - "CORD-REEL"

1 3/4 h.p. vacuum cleaner. REGULAR \$89.95

\$79.95

SUNBEAM SPECIAL! Vacuum Cleaner \$29.88

SANTA'S SPECIAL

Double Fun Set

It's a chalkboard with numbers, alphabet, chalk, eraser—or page board with mallet, pegs.

\$2.99

Reg. Price \$3.99

SANTA'S SPECIAL

Dresser Set

Combs, brush and mirror in assorted perfections appeal to any little girl's vanity.

\$1.99

Reg. Price \$2.98

4-Way Lighting POLE LAMP

\$11.95

Adjusts 7'10" to 8'4"

Rich polished brass pole with three white frosted glass reflectors. Convenient 4-way switch in stem.

4.95 DOWN

ONEIDA STAINLESS

Lovely stainless with a care-free finish that never needs polishing. Choice of three beautiful designs.

55-PIECE SERVICE FOR 8 ONLY \$19.95

includes 7 SERVING PIECES

Merry Christmas

In the snowy hush of a winter landscape, a church steeple seeks the sky . . . and we see the quiet contentment of Christmas, spreading its joys everywhere. That your joys be many, is our holiday wish for our valued friends and customers.

From All of Us at

CHELSEA LUMBER CO.

CHUCK - STEVE - MIKE - FRED - PAT
BOB - JIM - RAY - DALE - PHIL

Peace on earth

A full measure of joy to our Noel wish for you!

MID-STATE FINANCE CORP.

Solve Gift Problems With A Gambles Gift Certificate

TV-RADIO by Fisher-Price. Turn knob, see story, hear music. Reg. \$2.48. **\$1.88**

Sorry—This is a fine game for family play. Easy to play and exciting. Reg. \$3.98. **\$2.60**

SCIENCE TOPICS

WEEZING MANNIKIN has a husband-and-wife team to help evaluate surgical masks at the University of Wisconsin School of Engineering. The mask to be tested is placed over the nose and mouth of the mannikin. The mannikin is placed in a special air-tight chamber and a known number of bacteria is blown out through the mask. After three minutes, the mannikin's nose is removed and the number of bacteria that escape through the mask is counted. The relative efficiencies of various types of masks are determined.

SEAWEED? In strange as it sounds, honeycombed seaweed is growing in 140-gallon tanks in Ohio. As a matter of fact, it is growing in 140-gallon tanks in Ohio. Dr. Llewellyn Collins has the strange seaweed at Ohio State University. He has become quite an authority on seaweed, the seaweed growing in tanks. She already has had four new species and has shipped them to the botanists around the world seeking her help in identifying them.

FIRST PHOTOGRAPHS of the Earth's atmosphere have been produced in the University of Wisconsin's space astronomy program. The photographs were taken with cameras mounted on a rocket plane.

GETTING THE SQUEEZE out of an important part of making plastic cases, according to National Gas, Chicago. Air conditioning plants, which produce nitrogen and argon from the atmosphere, compress air to 100 times its normal volume, mechanically rotate it and then expand it to change it into a liquid. It is then separated into the various gases in a liquefaction column.

FASTER WAY of analyzing for early signs of disease has been developed at Georgetown University. According to biochemists, the new method combines use of resonance (radiant light) and organic catalysts in measuring constituents in blood. Using the technique developed at Georgetown, a medical technician can perform an analysis in two minutes compared to the 20 minutes now required by automatic instruments.

AWESOME five-foot-tall figure of the Tibetan god of war, Yama, is on exhibit at Chicago's Field Museum. The god's terrifying facial features and painful expressions are faithfully reproduced in the Yama figure. The figure was made by Rod

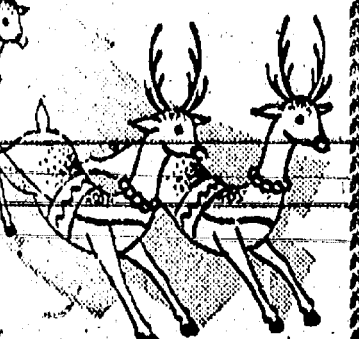
Decorations for Christmas use living greenery for festive holiday decor. In the past, where greenery is scarce, people use artificial paper, ribbons, and other materials for Yule decorations.



All Good Wishes for Christmas



If you, Santa brings a sleigh full of heartfelt thanks, cheer and a host of good wishes for the happiness of holiday!



Recreation Tavern Robert Howe

THE SUPERMARKET THAT'S JUST A LITTLE BIT BETTER

Stop & Shop

14901 Old U.S.-12
Corner at M-52
Chelsea

Greetings of the Season and Merry Christmas to all!

Prices Effective Wednesday, December 20 through Tuesday, December 26, 1967

"Triple R Farms" FRESH DRESSED

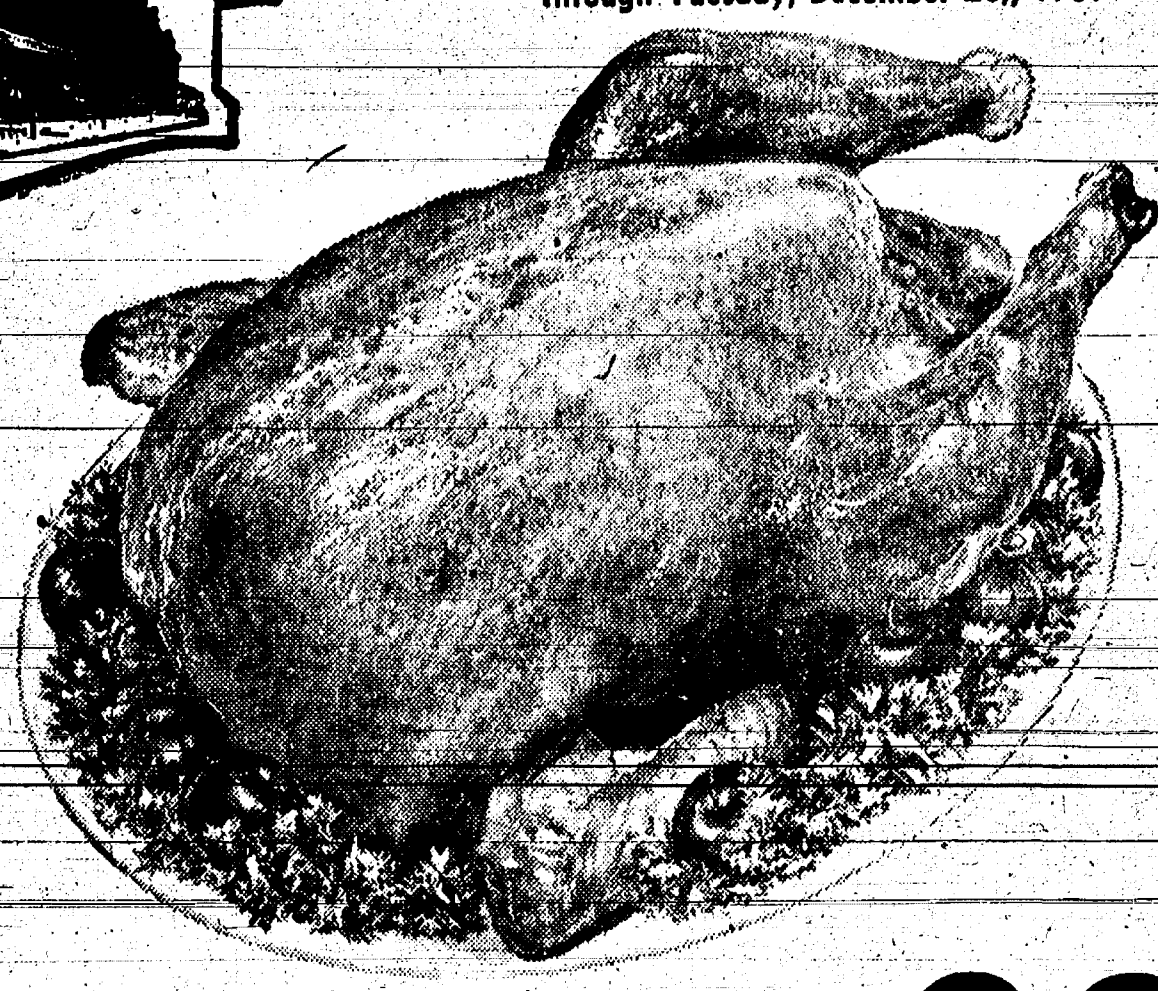
TURKEYS

OVEN-READY FULL-BREADED PLUMP & TENDER GRADE "A"

43^c lb.

18 Lbs. and up

This Year's Crop! Fresh Killed! Never Frozen!



U.S. Government Inspected

TURKEYS . . . 29^c lb.

18 Lbs. and up

"TRIPLE R FARMS" SEMI-BONELESS

HAMS

De-Fatted - Hickory Smoked Ready-to-Eat

69^c lb.

Whole or Half

Morrell's Original Chef Brand BONELESS HAM Fully Cooked \$1³⁹ lb.

Hormel "Cured 81" REGISTERED HAMS \$1³⁹ lb.

"Triple R Farms" Fresh Dressed

Roasting Chickens 3 to 4 Lb. Average **39^c** lb.

Honeysuckle U.S.D.A. Grade "A"

Turkeys 10 to 12 Lb. Average **49^c** lb.

Stop & Shop's Fresh All Beef.

Hamburger **59^c** lb.

Stop & Shop's Homemade

Pork Sausage **49^c** lb.

"Triple R Farms" Mich. Grade 1 SKINLESS WIENERS **49^c** lb.

"Triple R Farms" Mich. Grade 1 SLICED BOLOGNA **49^c** lb.

Maxwell House COFFEE 1-Lb. Can **69^c**

Land O' Lakes, Lightly Salted BUTTER In 1/4-Lb. Prints 1-Lb. Carton **69^c**

Royal GELATIN DESSERT 3 1/2-oz. Pkg. **5^c**

Del Monte CATSUP 14-oz. Bottle **19^c**

Farm Fresh Produce

California Navel ORANGES 1 3/8 Size Dozen **49^c**

U.S. No. 1 Idaho POTATOES 8-Lb. Bag **59^c**

Bake 'Em, Mash 'Em, Fry 'Em

California Fresh, Crisp PASCAL CELERY Large Stalk **19^c**

U.S. No. 1 Delicious APPLES 3-Lb. Bag **49^c**

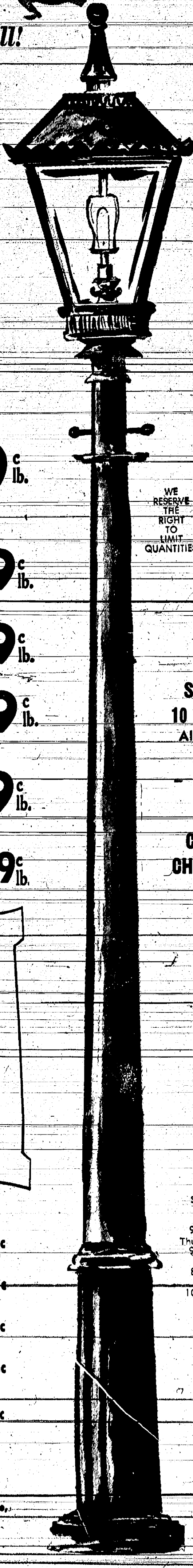
Evaporated PET MILK 14-oz. Can 15^c	Del Monte, Early Garden PEAS 1-Lb., 1-oz. Cans 5^c	Treesweet Fresh Frozen Florida ORANGE JUICE 6-oz. Can 14^c
McDonald's EGG NOG Quart Carton 59^c	Contadine Whole, Peeled TOMATOES 1-Lb., 4-oz. Can 29^c	Nabisco Mister Salty PRETZELS 10-oz. Box 39^c
Libby's PUMPKIN 1-Lb., 3-oz. Can 22^c	Aunt Jane's Sweet Midget PICKLES 1-Lb., 12-oz. Can 59^c	Sunshine Krispy CRACKERS 1-Lb. Box 29^c
Del Monte FRUIT COCKTAIL 1-Lb., 1-oz. Cans 4^c	Del Monte Whole Kernel or Cream Style CORN 1-Lb., 1-oz. Cans 5^c	Hekman's CLUB CRACKERS 1-Lb. Box 29^c
Ocean Spray Whole or Strained CRANBERRY SAUCE 1-Lb. Can 19^c	Mrs. Smith Fresh Frozen PUMPKIN PIE 2-Lb., 12-oz. Pie 79^c	McDONALD'S Whipping Cream 1/2 Pint 29^c
Jiffy BISCUIT MIX 2-Lb., 8-oz. Box 29^c	McDonald's HOLIDAY CHEER Half Gallon 49^c	Michigan Pure Granulated SUGAR 5 Lb. Bag 48^c
Spruce Imported MANDARIN ORANGES 11-oz. Can 23^c	4% Less Calories, 40% Less Fat	Pillsbury CAKE MIXES White, Chocolate, Yellow, Applesauce, Swiss Chocolate, Double Dutch Your Choice 3 Boxes \$1
Butterfield SWEET POTATOES 1-Lb., 7-oz. Can 23^c		

WE RESERVE THE RIGHT TO LIMIT QUANTITIES

OPEN SUNDAY 10 a.m. - 6 p.m. All Sale Prices Effective Sundays

CLOSED CHRISTMAS DAY

STORE HOURS: Tuesday thru Wednesday 9 a.m. to 6 p.m. Thursday and Friday 9 a.m. to 9 p.m. Saturday 8 a.m. to 9 p.m. Sunday 10 a.m. to 6 p.m.





BOY SCOUT NEWS

TROOP 165— Boy Scout Troop 465 was given a general first aid demonstration by Dr. Bruce Stubbs at a recent troop meeting.

Steer Butchered By Rustlers on Area Farm The carcass of a steer which had been "butchered" and removed from the farm of Mr. and Mrs. Hans Sjaerlund, 4390 Strawberry Lake Rd., were found on the premises Saturday, Dec. 23.

The Michigan Department of Agriculture enforces the nation's strictest law controlling the production of sausage labeled Michigan Grade 1.

SOUTH ELEMENTARY SCHOOL NOTES

KINDERGARTEN—

Room 1 Teacher, Mrs. Thornton Reporter, Todd Wurster Michael Waldyko did an experiment for us. He made an electromagnet. It was fun to watch.

Room 1

Teacher, Mrs. Thornton Reporter, Todd Wurster Michael Waldyko did an experiment for us. He made an electromagnet. It was fun to watch.

SECOND GRADE—

Room 11 Teacher, Mrs. Nancy Reporter, Chris Smyth We are studying about the eye. The model helps us learn the parts.

Room 10 Teacher, Mrs. Plank Reporter, Dawn Kloubuchar Christmas is just around the corner and a construction paper replica of what we want from Santa can be found under our bulletin board Christmas tree.

Room 8 Teacher, Mrs. Smedegaard Reporter, Ronald Gasper We are getting ready for Christmas. Craig Kalishek brought a Christmas tree.

FIRST GRADE—

Room 4 Teacher, Mrs. Andrews Reporters, Terry Cameron and Debbie DeSmyther We've been busy making gifts for our parents. We've made the wrapping paper and Christmas cards.

Room 3 Teacher, Mrs. Moore Reporter, Patricia Welshans Joseph Keizer brought in x-rays of the scapular region.

Room 20 Teacher, Mrs. Moore Reporter, Patricia Welshans Joseph Keizer brought in x-rays of the scapular region.

Room 21 Teacher, Mrs. Senne Reporter, Greg McClain Our room is reading a story about Farmer Astronomer.

Room 5 Teacher, Mrs. Thodeson Reporters, Deborah Campbell and Richard McUmber Rodney Schneider brought four bunnies to school. They were four weeks old.

Room 19 Teacher, Mrs. Lange Reporter, Donald Messner Last Thursday because of the heavy fog, the buses were late, so the rest of us had a funny art lesson.

Death and Taxes ...Preparation For the Latter

(This is the first in a series of six articles on "Income Tax Tips for Farmers" prepared by Dr. Leonard R. Kyle, Extension Agricultural Economist at Michigan State University.)

Michigan farmers have the option of filing a final return on 1967 state and federal income taxes by Feb. 15, or they may file an estimate of '67 taxes before Jan. 15.

By filing the estimate, they will have until April 15 to file the final report. The additional time was designed to allow farmers to gear to the more common filing date and obtain necessary computerized material from banks and other financial institutions.

The annual burden of income tax filing can be minimized with an understanding of rules and by organizing records properly. Many farmers still lack an understanding of the basis for income tax reporting.

The relationship between the income tax report for the business and the individual is also often misunderstood. All farmers must file at least two basic reports, their personal 1040, which is a recapitulation of all of their potential sources of income—wages from off-farm work, interest, rents, royalties—and their Schedule F form.

Capital assets that have been disposed of need to be reported on a Schedule D form. The tax owed is computed on form 1040, after subtracting exemptions and itemized deductions. Refunds on gas tax and investment credit are also deducted on this form.

Filing the year-end report will not be difficult for farmers who have maintained an adequate record-keeping system during the year. The Farmer's Tax Guide, complete with examples and discussion of various tax forms, is useful for solving tax problems.

The Guide is now available at Internal Revenue Service and county Extension offices. For complicated business transactions or tax reporting problems, a good tax practitioner should be consulted.

passed it to a neighbor who drew the torso without looking at the head. The third student added the legs; then we unfolded them to see wild creatures.

Mrs. Leach came Tuesday and showed us some slides of New York and Washington, D. C.

Thursday was Mrs. Lange's birthday. In the afternoon Donald Messner and his mother had planned a surprise birthday party for Mrs. Lange. Friday, Elaine Schenk and Kathy Kuhl also held a party for her.

Our room is ready and waiting for Santa-Claus to come. We have a silver tree in the middle and our desks are in a big square, so everybody can see it.

Donald Pierson made a report on one of our famous statues called the "Statue of Liberty." Kim Longworth made a report on New York; we have had three reports on Pennsylvania by Sharmar Wackenhut, Cindy Harcock, and Pam Blackwell.

We are happily looking forward to vacation arithmetic. JUST LOTS OF FUN!!!

Club and Social Activities

PAST NOBLE GRANDS

Past Noble Grand club of Chelsea Rebekah Lodge No. 130 held its Christmas meeting Tuesday, Dec. 12 at the home of Mrs. Donovan Sweeney.

The January meeting will be held at the home of Mrs. Homer Nixon, with Mrs. Clarence Lake as hostess.

ESTHER CHAPTER

Esther Chapter of the Congregational church met Thursday evening, Dec. 14 for their Christmas party at the home of Mrs. Laurayne White. There were 13 members present.

Popcorn balls which some of the members had made were wrapped in colored cellophane during the meeting and tied with a ribbon attached to a candy cane. These, as well as some washcloths and soap made into animals or various other shapes, were the projects of the group to be added to the Social Service boxes.

The Chapter decided to share 12 days of Christmas in Christian love with a church family. Mrs. White and co-hostess, Mrs. Richard Smith, served lunch to the group.

CHELSEA COMMUNITY FARM BUREAU

Chelsea Community Farm Bureau met Thursday, Dec. 14. The Christmas party was held at the home of Mr. and Mrs. Walter Zeeb, with Mr. and Mrs. Roy Kalmback as co-hosts.

Erwin Trinkle opened the meeting. Allan Broesamle was discussion leader and spoke on how the Farm Bureau helps to control some of the new laws.

A pot-luck supper was served. In place of a gift exchange, a collection of money was taken and given to a needy person. Members played cards, for which the high prize went to Mrs. Calvin Clark.

Low prize was earned by Mrs. Henry LaRose. Man's high prize went to John Cook, with low prize going to Erwin Trinkle. Allan Broesamle won the traveling prize.

AG ENTREPRENEURS

Agricultural Entrepreneurs Farm Bureau Group Christmas pot-luck drew nearly 50 persons, half of them children, Saturday evening, Dec. 16.

Meeting at Lima Community Hall, which was appropriately decorated for the occasion, the group placed lights on a Christmas tree, after which the youngsters adorned it with hand-made decorations they had created at home.

Following dinner, the children were treated to a story, "A Christmas Fantasy in Disneyland," after which slides of the well-known children's "paradise" were shown.

The old fellow himself, St. Nicholas, paid a visit to the party, with gifts for every child present. Members of the committee included Mrs. LaVerne Coy, Mrs. Keith Bradbury and Mrs. Charles Trinkle.



Modern Beauty Shoppe

In Science, we have been experimenting with magnets. We found out that magnets can do work.

We wrote letters to two soldiers in Vietnam. We made Christmas pictures for them.

Room 8 Teacher, Mrs. Smedegaard Reporter, Ronald Gasper We are getting ready for Christmas. Craig Kalishek brought a Christmas tree.

We made Santa Claus out of red paper and cotton. We made a wish tree out of ribbon. It shows what we wish for.

We have been studying about families. We made pictures of the members of our families. We grouped each family together.

Richard Kiss Bulldozing Contractor

AT HURON VALLEY YOU CAN EARN... 5 1/2 EFFECTIVE RATE ON 5% TimeDeposits when held 46 months... Your TimeDeposit Passbook account earns 5 1/2 % (effective rate) when held 46 months, because we compound the legal maximum rate of 5% interest every day. And we guarantee this rate of interest for 3 years and 10 months. HURON VALLEY National Bank...the bank on the grow

YES WE ARE MAKING LONG-TERM FARM REAL ESTATE LOANS SEE US Federal LAND BANK Association Ph. 663-6139-2221 Jackson Ave. Ann Arbor, Mich. 48106 P. O. Box 1006

Blessings at Christmas We wish our friends and neighbors all the blessings of this holy, happy season. May the message of the first Christmas comfort and inspire you. FLOYD D. ROWE & SON PLUMBING and WELL DRILLING FLOYD and DUANE ROWE

MERRY CHRISTMAS Johnny Podres, Jerry Lump, Dick Tracewski, Norm Cash and Middle Mathews are the only to play in a World Series. Santa is busy spreading Christmas cheer, and once again it's our time to thank friends and customers for their loyal patronage.

SAM'S BARBER SHOP I wish you joy and happiness this holy Season.

WEINBERG DAIRY Christmas is a happy time for all those young at heart. Merry Christmas JOHN W. STEELE SHEET METAL 521 Garfield

BEST WISHES FOR Christmas Well-loved carols fill the air as happily, we celebrate Christmas. To one and all, our wishes for a season filled with the harmony of peace and joy. PARISH'S CHELSEA CLEANERS

Investment Per Worker Runs \$30,000 Up

Michigan farm investment per man required the most amount of capital per man. Tree, fruit, potato and northern dairy farms used the least amount of capital per man, according to the MSU study.

Appreciate Your Christmas Tree, It Didn't Just Grow

A natural Christmas tree, well shaped and glistening green, did not "just happen." During its relatively short life it endured, and overcame, conditions difficult to understand by the discriminating buyer. It is truly a remarkable product of nature, and should be recognized as a valuable natural resource.

Those familiar with tree growth know the importance of the many factors which contribute to the development of a Christmas tree. Trux McFarland, (Area Forester), points out that weather is one of these. Lack of moisture can result in excess needle shed prior to cutting and to poor needle color. Heavy snowfall can weight branches down so that a dense tree actually looks too "open." It can even break branches. Snow, also, can be the culprit responsible for crooked trunks, bending over small trees during their early stages of growth.

Insects are a continual hazard, McFarland reports. Some can kill a tree while others are destroyers of good tree ships. Animals are no less a nuisance. Mice kill trees with their habit of gnawing the trunk. Rabbits and deer nip off branches and buds. And even birds can be a problem. The pine grosbeak dines on buds, and any tree which plays host to this bird faces an uphill battle to develop good Christmas tree form. Other bird damage results with the breakage of tender new stems during their early growth when birds perch on them.

McFarland states that man, himself, is the final hazard. Momentary negligence of branches through poor handling can ruin a perfect tree only weeks before the Christmas season.

In its final setting the Christmas tree should not be looked at as just another Christmas expense. Rather, it needs the human understanding that it served a useful purpose. It should be added for its inherent warmth and beauty which only nature can produce.

Vo-Tech Study Needs Clarifying Of Projected Costs

Earl W. Shafter, study director of the Vocational-Technical Education Opportunities Study for Washtenaw and Livingston counties, recently noted that one part of the efforts to establish a county-wide occupational education program for high school students needs further clarification. Plans here have not, thus far, set up a projected cost in terms of millage.

Costs for construction and operation for such programs are dependent upon: projected growth of high school enrollments, etc.; square footage of floor space required for various occupational courses; types of equipment required for these courses; number of years over which bonds are retired; predicted future state equalized evaluation of the school districts involved; and available state and federal aid.

Oakland county, for instance, plans four area occupational education centers for high school students. In June 1967, Oakland county voters approved a mill to finance the construction and operation of the four centers. Monroe county planners, on the other hand, determined that a mill would be necessary to finance one occupational education center to serve 11th and 12th graders from all high schools in the county.

Projected costs for an area occupational program(s) for Washtenaw and Livingston counties will be released when school planners have determined the scope and content of proposed programs.

Serving on the executive committee of the study group are Albert Rublik and Al Sanborn of the Dexter school district.

Tigers Start In Training Camp Feb. 24

Detroit—Opening of 1968 spring training on Saturday, Feb. 24, a 80-game exhibition schedule featuring five games with the World Champion St. Louis Cardinals were announced Wednesday by the Tigers.

For the second straight year, all of the 30 exhibitions will be played in Florida, it was disclosed by Jim Campbell, executive vice-president and general manager, with the Tigers flying straight home for their American League opener April 9 with the Boston Red Sox.

Manager Mayo Smith has invited all Tigers to report Feb. 24 to the spring camp at Lakeland, Fla., where the Tigers have trained since 1934. In some previous seasons, battersmen have been asked to report before other players, but all will hit camp at the same time in 1968.

In addition to the 30 players on their spring roster, the Tigers have invited four minor leaguers to work out with them. They are outfielder Lenny Green, who finished the 1967 season at Tiger Stadium; pitcher Tom Timmerman, who was at Toledo last year and has been pitching well in Puerto Rico this winter; and catchers Arlo Brunsberg and Bill Heath. Brunsberg, who was on the Tiger roster a year ago, was at Columbus in 1967, while Heath split time between Toledo and Detroit after his purchase from the Houston Astros in May.

In their Florida exhibition campaign, opening March 8 and ending April 7, the Tigers will meet every one of the other 15 clubs training in Florida. Half of the schedule will be played at Marchant Stadium, Lakeland, against 14 different teams and the other 15 games in 12 different Florida cities.

The Tigers and Oakland Athletics will lift the curtain on the Grapefruit League season at Bradenton, March 8. The following day, the Tigers will meet the Minnesota Twins in their Lakeland opener. For the first time in three years, the Tigers will make a swing to the Miami area to play the Baltimore Orioles March 21 in their only night game, the New York Yankees at Ft. Lauderdale March 24 and the Atlanta Braves at West Palm Beach March 26.

There is only one open date on the schedule, falling on April 4, after which the Tigers will play the Cardinals three straight days before flying home. There was a similar pattern with the Red Sox last spring, following five straight years in which the Tigers barnstormed their way north after the Florida campaign.

ONE-MINUTE SPORTS QUIZ

1. Who won the India-South Africa Cup Match?
2. Did Rocky Marciano ever lose a pro fight?
3. Did Joe Louis ever suffer defeat as heavyweight champion?
4. What football team defeated both UCLA and Southern Cal this season?
5. For whom does Bob Hewitt play tennis?

Sports Quiz Answers . . .

1. South Africa.
2. No.
3. No.
4. Oregon State.
5. South Africa.

Cottontail rabbits, snowshoe hares, and gray and fox squirrels are active throughout the winter. During severely cold weather, all of them may remain in a den or leaf nest for a day or two, but they must soon be about in search of food.



Washington Report by Congressman MARVIN L. ESCH

This week I'm taking the liberty of departing from our regular Washington Report format as our family's way of sharing with you some personal thoughts of the season.

Surely Christmas is a time for many things. Foremost, although seemingly lost at times in commercialization, is the religious inspiration to be found in the celebration of the birth of Christ and the spirit of giving which surrounds these holidays. Christmas is a time for fond remembrances, for thoughts of good things to eat and, more seriously, a time for reflection and redemption.

Most fond of memories in our family as I'm sure it is in many others, is the decoration of the Christmas tree. Of course this can be both a joyous and trying experience. The delightful purchase of that beautiful tree can be spoiled when you find out about the crooked trunk when you get it home. And when Junior, reaching for an ornament, knocks it over for the third time one can feel all is lost. When I think that our first tree cost me 75 cents, I can't help but exclaim about how times have changed.

As for that good food, I'm reminded about the number one contribution of my wife, Olga—homemade nutbread. The kids prefer her chocolate chip cookies. Gifts of baked goods always carry a special warmth, perhaps because it's something that the giver made herself.

As we reflect on the past year, Christmas is somehow different.

Partridge Carol Can Become Real Tongue Twister

"On the first day of Christmas, my true love sent to me a partridge in a pear tree."

So begins "The Twelve Days of Christmas," a traditional and favorite song of the holiday season. The ballad tells the story of the gifts a lover sends to his lady on each of the 12 days from Christmas to Epiphany.

The first gift, a partridge in a pear tree, may have been inspired by an old drinking song, "A Pitt sat on a Pear Tree," say the Editors of The New Book of Knowledge.

As a ballad, "The Twelve Days of Christmas" is an example of the "number chain formula" in folk songs. As a carol, it is of the type that marked the change from formal hymns in Latin to musical poems in the vernacular of the people.

The song can be sung in a variety of ways. In Great Britain and the United States, it often becomes a game song in which each person, following a leader in repetitions, must pay a forfeit if he misses a line. Sometimes the descriptions of the gifts turn into mouth-defying tongue twisters.

A holiday meant for fellowship, enjoyment and entertainment is somehow changed this time around. Certainly the duty of national office has altered our outlook. We feel closer to our national problems. We see in our mail that our national problems, often thought of as distant items, affect the day-to-day activities of individuals. And we think frequently about the hundreds of people who have written us seeking help in solving serious personal problems.

We cannot help but look back on 1967 with concern about the direction of our nation. The war, the riots, inflation and our many other serious national, but yet personal, concerns make it difficult to be optimistic about the future. Yet when one considers the proven ability of the American people to face and beat hard times, one can't help but be optimistic and re-dedicate himself to help pull us through this difficult period.

This Christmas, our family joins yours in a prayer for peace and for a new year that may bring in our nation a re-dedication to freedom and responsibility.

PEARLS of WISDOM

My best of wishes for your merry Christmases and your Happy New Years, your long lives and your true prosperities. Worth 20 pound good if they are delivered as I send them. Remember? Here's a final prescription added: "To be taken for life." —Charles Dickens.

Indeed he knows not how to know, who knows not also how to un-know. —Sir Richard Francis Burton.

It is as fateful as it is cowardly to blink facts because they are not to our taste. —John Tyndall.

The highest proof of virtue is to possess boundless power without using it. —Thomas Babington, Lord Macaulay.

And ruined love, when it is built anew, grows fairer than at first, more strong, far greater. —Shakespeare.

The wheel that squeaks the loudest is the one that gets the grease. —Henry Wheeler Shaw.

In proportion as the antagonism between classes within the nation vanishes, the hostility of one nation to another will come to an end. —Karl Marx.

PEACE ON EARTH As Wise Men journeyed to Him bearing gifts, so shall we journey through life, in quest of the peace He promised.

VILLAGE BEAUTY SALON
JEAN SWEET

BEST WISHES FOR A MERRY CHRISTMAS

May Santa make your every wish come true! We wish you a merry Yule and thank you for your friendship!

FARRELL SHEET METAL

We wish you a Merry Christmas

To our host of friends and neighbors, we extend our very best wishes for a most joyous holiday, and offer our deep appreciation for your continued loyalty and good will.

MERRY Christmas

Sleighloads of thanks to you loyal patrons. We hope Santa fulfills your wishes.

JACK & SON BARBERS
UNION SHOP

Christmas is here!

We're sending our warmest wishes to you and your family for a very, merry Christmas! Thank you for your patronage.

Chelsea Service Laundromat

Peace on Earth

May the spiritual blessings of the season be bestowed on you and yours.

TINA'S BEAUTY SHOP
Jan - Laura - Tina

Greetings

It's Christmas, and time to greet good friends . . . time, too, to count our blessings. One of the greatest of these is the friendship of those whom we are privileged to serve.

TO ALL, OUR THANKS AND BEST WISHES

FINKBEINER LUMBER CO.
The Steinbachs - Martin and Alene

Hi! MERRY CHRISTMAS

May your Day be an especially joyous one . . . filled with holiday happiness and good cheer.

A. D. MAYER AGENCY
"Your Protection Is Our Business"

HAVE YOUR CARPETS AND FURNITURE CLEANED

by the **Duraclean®** Absorption Process

NO messy soaking—NO harsh scrubbing—NO upstair house. Everything ready to use same day.

For FREE quotation, phone Duraclean Carpet Cleaners Phone Ann Arbor 663-3980

Santa's coming your way, sounding a note of good cheer.

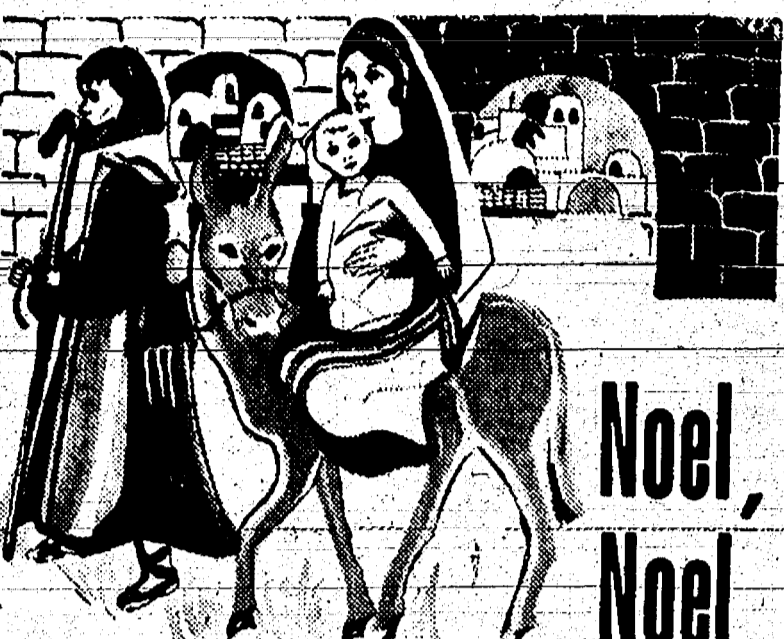
Merry Christmas

Boyer Automotive Supply
Dean Fritz - Dick Kolander - Andy Fleischmann

Feed-Lasher pitched for three had winning records with all of clubs during the 1937 season and then.



PAUL BUNYAN RESTAURANT
WALTER ERNST



As we celebrate His Birth, we wish for you the blessings of friendship, love and understanding... the true spirit of Christmas.

Jerry's Ashland Service
JERRY SATTERTHWAITE



To Thank You and Wish You Merry Christmas

FOSTER'S MEN'S WEAR
BOB - SCOTT - DAVE



MERRY CHRISTMAS

Time to wish all of our good friends and loyal customers a merry holiday season full of peace and happiness. We extend our heartfelt thanks to you and your families for your loyal patronage during the year.

BOLLINGER SANITATION SERVICE

Spirit of Christmas Spreads Good Will and Cheer

In churches and homes, in city streets and stores, across the countryside—the spirit of Christmas spreads its joy and its contentment. Soon now, the last-minute hustle and bustle will give way to the highest moments of holiday celebration. It's a time for fun and feasting, a time for light-hearted laughter and heart-felt prayer, a time when friendships are renewed and family ties are strengthened.

Throughout this community, and indeed throughout all the communities where Christmas is celebrated, the spirit of the season finds expression in innumerable ways—among them, the gladness of gift-giving, the merriment of parties, the happiness of hearth and home and, above all, the solemn hush of midnight, traditionally the symbolic time for heralding the Birth of Christ.

From the holly wreath on the door to the packages under the tree, from the early decorated windows of stores to the manger scenes in the churches, the customs of Christmas contribute to the meaning of the Day—just as early Christian leaders meant that holiday customs should.

When Christmas first began to be observed on December 25th, churchmen welcomed the idea of incorporating ceremonies and traditions from earlier beliefs into the celebration. They thought that people would feel closer to the new religion if former ways and rituals were not abolished, but instead united with the new rites to honor the birth of Christ.

Today, nearly everyone celebrates Christmas because Christmas belongs to everyone.

For the Christian believer, Christmas is cherished as a religious holiday of paramount importance, and as a time meant for joy and festivity, too.

For people of many different faiths, Christmas is beloved as a happy holiday, a secular celebration that gives meaningful expression to universal good will and good cheer.

Since the Wise Men gave of their treasures to the Christ Child, giving has been part of the tradition of Christmas.

The idea of gifts as homage dates from even earlier times, when kings demanded special tributes from their subjects during holiday seasons. Thus, the Wise Men, in offering precious gifts of gold, frankincense and myrrh, expressed their reverence for the newborn King of mankind.

Giving to celebrate a happy time was a familiar part of many pagan festivals.

The Romans honored Saturn, their god of agriculture, with a winter festival called the Saturnalia. During this joyous feast, they exchanged gifts—wax candles, clay dolls and various trinkets.

When these pagan customs of exchanging gifts were transferred to the celebration of the birth of Christ, church leaders added a new idea; selfless giving. Through the ages, giving to help the less fortunate has been a special tradition of Christmas.

Perhaps even more than the giving of gifts, the sending of Christmas greetings symbolizes the seasonal spirit of good will.

The personal exchange of good wishes at holiday time is a custom that's older, probably, than Christmas itself. In ancient winter festivals the renewal of the earth at the coming of spring was linked with the renewal of friendships.

Though greetings and Christmas have long been associated, the printed greeting card is a relative newcomer to the Yule scene—introduced little more than a century ago.

Nowadays, Christmas greeting cards go out by the billions, carrying their messages of "happy holiday" and "best wishes."

In the glad tradition of sending greetings, today's edition of this newspaper presents the special greetings of local merchants, as they express their good wishes and gratitude to customers and friends.

Bill Bow's Super Service
Bill - Bill, Jr. - A/c Bob - George - Harold - Barb - Merle

Make Christmas Safe for Everyone, Red Cross Urges

Christmas can be one of the happiest times of the year, but it can also be one of the most dangerous unless certain safety precautions are taken, Robert T. Fisher, chairman of the First Aid Committee of the Washtenaw County Chapter of the American Red Cross, 2729 Packard Rd., Ann Arbor, said today.

"Fires can maim and kill," he warned, and listed some of the things householders should remember as they prepare for the holiday festivities this month.

He suggested these rules to follow to prevent fire from Christmas trees and decorations:

Use non-flammable decorations on the Christmas tree and throughout the house. If you use a fresh tree, keep the base of the trunk in water; it will remain greener and more fire resistant.

Never use candles as Christmas tree decorations; keep other candles well away from the tree, and warn smokers not to smoke near it.

Place your tree away from fireplaces, radiators, and stoves, and in a place where it will not block an exit.

Check all electric cords to be sure they are in good condition. When the holidays are over, don't let down your guard. Dispose of your tree carefully. Do not burn it in or near your home.

Another area in which care must be exercised is the selection of toys for small children, Fisher said.

"Toys are the delight of children. The thrill of waiting for them, opening their gifts, and getting to know their toys makes Christmas a time of true magic for youngsters," he said.

But there is another angle that parents think about, and that is to buy safe toys.

"Avoid toys with sharp metal corners or edges.

Remember that eyes on a stuffed animal may fall into your baby's mouth.

"Paint on toys may contain lead which, if chewed, can cause lead poisoning.

"Detachable parts of toys—wheels, bells, knobs—can get stuck in your child's throat.

"Avoid plastic that can shatter, because broken rattles spill tiny stones.

"If you are safety conscious when you do your Christmas shopping," Fisher concluded, "you may be sure that the days and months after the holidays will be safe ones for your children. Make this a happy, safe Christmas."

A skilled workman in the Philippines scoops out 1,400 coconut halves an hour. Eight million laborers there supply half the world's coconut products.

The trouble with highly-pressured emotions is that they suddenly drop to a new low.

Despite your fears, the can get along without you will.



GREETINGS
May the cheery sounds of Christmas carry with them the warmest joys, and thank to you, our good friends and customers.

GUENTHER STUDIO
RALPH GUENTHER



Christmastime, and once again we pause to wish good friends all the special joys and blessings of the season. May your Day bring an abundance of happiness and peace.

CLOSED CHRISTMAS DAY
Cavanaugh Lake Store

Dolls, Dolls, Dolls! Each Has Its Story

"It's fun to get a doll for Christmas."

This statement comes from a real authority, who is a former Marine, a world traveler and international—airline executive—and who is also a man who has more dolls than almost anybody except Santa Claus!

Collector Samuel F. Pryor is the founder of the International Doll Library in Greenwich, Conn., where more than 8,000 dolls are gathered in fabulous variety.

Began in 1953 when he inherited 300 dolls from a friend, the still-growing collection includes hundreds of dolls searched out by Mr. Pryor himself, and it has also been augmented by gifts from some of the thousands of visitors to the Doll Library—hence Mr. Pryor's personal knowledge that a doll under the Christmas tree is truly a source of delight.

The Doll Library, so named because every doll has a story to tell, is attractively housed in a 1792 barn, remodeled to provide appropriate settings for the dolls. Visits to the Doll Library are by appointment only.

Here, there are antique dolls, historic dolls; craft dolls, religious dolls, dolls of every land and every era. The dolls indeed have much to tell to the serious student of world history and world civilization.

But to Mr. Pryor, the important thing about the dolls is that they are objects of affection—cherished by little girls waiting for Santa, and by everyone who loves dolls, to play with and admire. Along with their legacy of love, the dolls bring a record of mankind's ingenuity.

Among the antique dolls in Mr. Pryor's collection is a 19th century beauty who turns her head, flutters her eyelids, heaves her bosom and plays a lyre, to the tune of a hidden music box.

Many other dolls in the Pryor collection make it plain that mechanical accomplishments are by no means limited to the dolls of today. For instance, a group of early American dolls includes the "Autoperipatetikos"—a walking doll patented in 1862.

Another kind of ingenuity is manifest in the craft dolls, loving-

fashioned by thoughtful hands from virtually any and every convenient material—pen nibs, shells, newspapers, wishbones, sponges, corn cobs, pine cones, pipecleaners, clay pipes, even an old potato masher.

Among them are "Mr. and Mrs. Crab," dolls with faces made from crab claws. These do-it-yourself dolls were featured in "Godey's Lady's Book" for May 1867, with illustrations of Mr. and Mrs. Crab and "how to" instructions.

Among the Library's little inhabitants, dolls of other lands form a miniature United Nations. A turbaned Brazilian dancer, a Spanish matador with cape and sword, a Japanese geisha, a Belgian lady, a German tourist, an Arabian desert prince, an Argentinian gaucho—the list is seemingly endless.

Differences may divide nations—but not in the Doll Library. Mr. Pryor's dolls get an opportunity to enact the holiday spirit of peace and good will, all year. As a pastime, he likes to bring dolls of many nations together in friendly groups.



Christmas Joy
At the scene of His birth, the world was blessed with a glorious message. May the eternal joy of Christmas Day live in your hearts!

CLOSED CHRISTMAS DAY
Bill Bow's Super Service
Bill - Bill, Jr. - A/c Bob - George - Harold - Barb - Merle



Merry Christmas
This is the season when all good dreams may come true! We hope Santa remembers you and yours with everything you've been wishing for! And we send along our thanks for your friendship!

THE CHELSEA STANDARD STAFF

Greenfield Village Museum Ready for Holiday Festivities

An enchanting exhibit, "Toys and Dolls" opened Dec. 8 in the display area of Henry Ford Museum at Greenfield Village. It will continue daily, except on Christmas, through the holidays.

"Toys and Dolls" includes playthings from the 18th through the 20th century, highlighted by more than 400 dolls acquired by the Museum. This collection are figures of famous people in history—Betsy Ross, Herbert Hoover, Charlie Chaplin, Shirley Temple—plus antique American and European dolls. Some older dolls are original dresses, while others are attired in period costumes to give today's youngsters a glimpse of what people wore in generations past.

From the Museum's own shop, plus numerous early metal toys, are included in the display. An electric display of the 1920's is set to operate scheduled times for visitation. Dec. 15, the traditional

"Christmas at Greenfield Village" opened with several of the historic homes decorated as their original owners would have done them at Christmas time. They represent outstanding examples of period decorations used during various eras of American past.

Rounding out the holiday program, the Greenfield Village Playhouse will offer a live production of "Cinderella" on the stage of the Henry Ford Museum Theater, beginning Dec. 22, with a 7:30 performance. This production, always a delight to children, is being produced this year to appeal to the entire family. Performances are at 2:30 each afternoon and at 7:30 each evening, with the exception of the 24th, when there will be no evening performance.

Henry Ford Museum and Greenfield Village are open 9 a.m. to 5 p.m. weekdays. The Museum remains open to 6 p.m. on weekends. On Christmas and New Year's days they will be closed to permit employees to celebrate the holidays with their families.

AT GREENFIELD VILLAGE Old Playthings Enliven New Christmas Exhibit



DEARBORN, Mich. — An enchanting Christmas exhibit, "Toys and Dolls," recalls what youngsters looked forward to finding Christmas morning in years gone by. The special display in Henry Ford Museum at Greenfield Village includes playthings from the 18th through early 20th century, highlighted by a recently acquired Museum collection of more than 400 dolls.



GLAD TIDINGS

Let every heart rejoice... it's Christmas! To each and every one of our valued friends, we send our most cordial wishes for a holiday season abounding in blessings.

Feasting, Festivities Are Part of Holiday Tradition

During the Christmas season, merry sounds ring out, pleasing sights greet the eye—and tantalizing aromas fill the air. Good food is as much a part of holiday tradition as bells and carols, greens and gifts.

At this festive time, people delight in serving their families and friends an abundance of choice foods. The custom probably began with the ancient winter festivals.

In the course of time, naturally each nation developed its own treasured customs in connection with the Christmas dinner, say the editors of The New Book of Knowledge.

Serving the 'Bird'

On American tables, the center of attraction is usually the turkey. This custom has its origin in the English "Christmas bird"—usually a goose, capon or chicken, rather than a turkey. In medieval times, a large bird was standard fare at English dinners among the common people.

In castle and manor, however, a "bird" wasn't always the main dish.

To the tune of the old carol, "The Bear's Head in Hand I Bear," the bear's head was borne to the table in solemn procession. Then followed other courses—and what courses! The most lavish of dinners usually featured a bear's head.

For a medieval feast, a typical menu included 17 main dishes—everything from roasted swan to a kid with a pudding in its belly!

Breaking Bread

Everywhere, a widespread use of breads and pastries is customary for the Christmas feast.

This has its origin in pre-Christian and early-Christian customs of the agricultural nations of Eastern Europe, where peasants offered thanksgiving for a good harvest, usually of grain, during the winter season.

Special holiday cakes were thought to bring good fortune and good health.

More directly connected with the religious meaning of the season is the "Christ-bread" tradition in many countries. This is a long cake, and its shape is meant to symbolize the Christ child wrapped in swaddling clothes.

Rhish mince pie and plum pudding began as national Christmas dishes in England. Like the "Christ-bread," early mince pies were baked in symbolic shape—an oblong meant to represent the manger.

Toasting the Holiday

As today's punch or eggnog bowl attests, favorite beverages and friendly toasts go along with the good cheer and good feasting of the holiday.

It all began with the English "wassail" bowl. The wassail, a holiday beverage of medieval times, was served hot in a large bowl—and it was compounded of ale, apples, eggs, sugar and spices.

The name comes from "Was hallo," a Saxon greeting which means, "Your health." Gradually, the word "wassailing" began to mean any kind of Christmas revelry accompanied by a festive beverage.

CLIMATE READY

If you're giving foliage plants this holiday season, be sure they are climate-conditioned by a local professional grower. Your insurance that this vital job has been done is to select foliage plants in red clay pots, rather than the thin-walled substitute containers sometimes used to ship southern tropical plants to market.

If you use an automatic dryer, take out clothes before they are bone dry. Overdrying sets wrinkles which increases ironing time.



Christmas Blessings

May you enjoy peace of mind, May your soul be gladdened by the Spirit of Christmas.

Leo A. Guinan
REAL ESTATE

★ Pressure Mounting on Legislators . . .

Every member in the House is being pressured by various groups and organizations, as well as citizens from every district on the "Fair or Open Housing Bill."

I recognize, through the letters I have been receiving, that many pastors in my district have requested the members of their congregations to write me favoring open housing.

I have received many letters from people telling me that their pastors did ask them to write me expressing a favorable view, however, many are stating at the close of their letters that they are opposed to this legislation and they are requesting that I vote against it.

When we had a bill before us to legalize dog racing, the pastore campaign was very effective and their pleas were adhered to; however, I was very much surprised when some weeks ago when we were considering tax measures to state income I ask the question on a questionnaire that I mailed

to 8,000 families in my district whether or not the legislature should legalize dog racing in Michigan. I am telling you this only to let you know it is sometimes difficult to vote the wishes of the majority of the people I have the privilege of representing.

Going back to the open housing bill, it is difficult to predict what the bill will contain when it comes up for a vote. I understand that there are over 100 amendments ready to be offered at the present time.

Those of you who are favoring the bill should try to keep track of its progress as it may develop into something you would not want. This also holds true for those who oppose the bill—it may develop into something you would want. This is why everyone should be careful about favoring or opposing the bill by number. You are always safe when you support or reject a concept of any legislation. I believe I can serve you better if I know your

REPORT from LANSING

State Representative

Thomas G. Sharpe

Christmas Party Tree Decorating Session

Mr. and Mrs. Alex Crofoot and family opened their holiday season with a Christmas party decorating session.

Mr. and Mrs. Al Grumet of Gregory and Mr. and Mrs. Jeff Reynolds of Jackson contributed their assistance to the Crofoots' final Christmas in Michigan. They will be moving to Washington,

D. C. Dec. 27, where Crofoot will be employed by the Federal Government Printing Office.

The time being too short for decorating a real Christmas tree, one constructed of multi-color tissue paper was decorated by the guests, with imitation bulbs cut from magazine Christmas illustrations.

Blind-folded guests then attempted to pin the second wing on the one-winged angel. (The missing right wing) was finally placed by Mrs. Albert Grumet for the top Christmas gift.

CALIFORNIA HERE I COME

The Tigers have five Californians on their 1968 roster, four pitchers and an outfielder.

a Merry Christmas

To you and yours, we extend our cheeriest holiday greetings and our sincere thanks for your loyal patronage, valued friendship and good will.

EIBLER, FRISINGER & ST. AMOUR CO.
GEORGE FRISINGER - HERMAN KOENN

Christmas Greetings

On that first Christmas, a special Star shone bright over the Mother and Child. May the Christmas star of peace, joy and happiness shine bright over you and yours for Christmas and all through the year.

REGENCY PHARMACY
In the Chelsea Medical Center

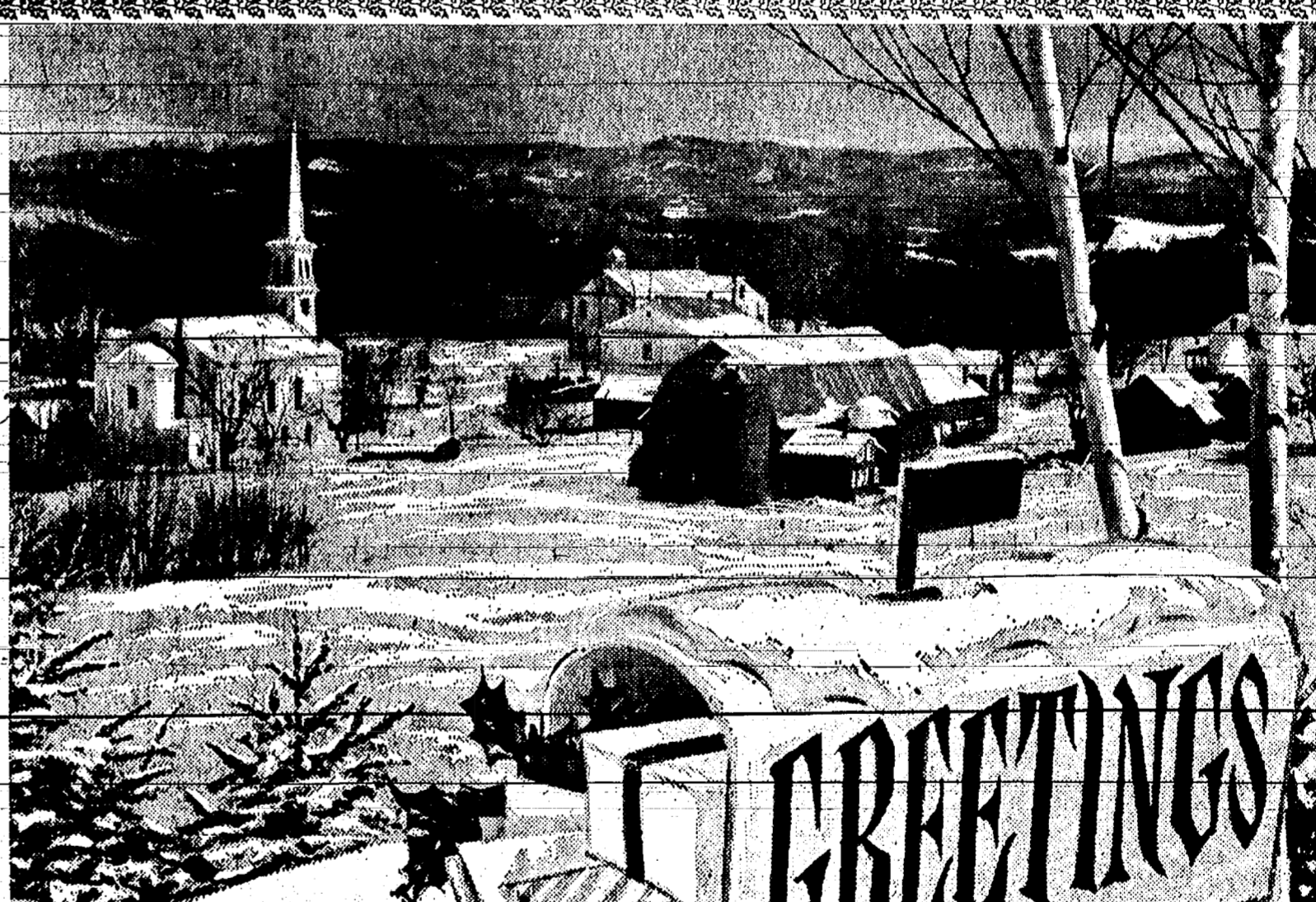
Dr. George N. Koffeman

Chiropractic Physician

Merry Christmas to all!

Here comes Santa with a sleigh-full of warmest wishes for a happy holiday. May the Christmas season bring every joy to you and your family.

Balmer Brake Service
Ted Balmer



A message for Christmas

To you, our good friends and customers, we're extending warm wishes for a bright and merry holiday season abounding with good cheer, fellowship and joy. And, with deep appreciation, we send along our many thanks for your thoughtful consideration all year. Serving you has indeed been our deepest pleasure and privilege.

Ruby and Wes Howes
George and Virginia Elkins
Georgia Collins

GAMBLES
"The Friendly Store"

Lorraine Higgs
Gary Seitz
Donald Henry

Enjoy Christmas in Church

ST. PAUL UNITED CHURCH OF CHRIST
(United Church of Christ)
The Rev. Warner Siebert, Pastor
Friday, Dec. 21—7:40 p.m.—Christmas caroling party for all children and youth.
Saturday, Dec. 22—9:00 a.m.—Confirmation.
10:00 a.m.—Children's choir.
11:00 a.m.—Youth choir.
Sunday, Dec. 24—10:00 a.m.—Church school.
10:30 a.m.—Worship.
8:00 p.m.—Add 11 p.m.—Worship and communion.
Wednesday, Dec. 27—7:15 p.m.—High school choir.
8:00 p.m.—Senior choir.

CONGREGATIONAL CHURCH
(United Church of Christ)
The Rev. Daniel Kolin, Pastor
Thursday, Dec. 21—No junior choir rehearsal. Senior choir caroling and coffee at parsonage.
Saturday, Dec. 23—2:00 p.m.—Wedding of Ruth Sexton and Alan Ladd.
Sunday, Dec. 24—10:00 a.m.—Worship and church school.
8:00 p.m.—Candle and carol service for the church.

ST. BARNABAS EPISCOPAL CHURCH
20600 Old US-12
The Rev. William D. Ludka, Vicar
Rector, Phone HA 6-8815
Thursday, Dec. 21—10:00 a.m.—Holy Communion.
St. Thomas Day.
Sunday, Dec. 24—9:15 a.m.—Morning Prayer.
9:15 a.m.—Church school and nursery.
8:00 p.m.—Christmas Eve Holy Communion.
Monday, Dec. 25—10:00 a.m.—Holy Communion.
Thursday, Dec. 28—8:00 p.m.—Altar Guild.

FIRST METHODIST CHURCH
The Rev. Robert Worgoss, Pastor
Thursday, Dec. 21—8:00 p.m.—Caroling—Junior and senior high MYF.
8:00 p.m.—Comm. on Social Concerns, Ed. Unit.
Sunday, Dec. 24—9:00 a.m.—Church school (Adult and 3rd grade through senior high).
10:00 a.m.—Church school (Nursery through 5th grade).
10:00 a.m.—Worship Service.
7:30 p.m.—Christmas Carol and Candlelight Service.
Wednesday, Dec. 27—No choir rehearsals.

CHELSEA BAPTIST CHURCH
The Rev. Elmer S. Steenson, Pastor
Sunday, Dec. 24—10:00 a.m.—Sunday school.
11:00 a.m.—Worship service.
Nursery care available during Sunday school and worship service.
6:00 p.m.—Service for Junior Young People.
7:00 p.m.—Evening worship service.
Wednesday, Dec. 27—7:30 p.m.—Bible study and prayer meeting.

ST. THOMAS EVANGELICAL LUTHERAN
Freedom Township
The Rev. John W. Ribar, Pastor
Thursday, Dec. 21—8:00 p.m.—Choir practice.
Friday, Dec. 22—Caroling.
Saturday, Dec. 23—10:30 a.m.—Sunday school Christmas service rehearsal.
Sunday, Dec. 24—10:00 a.m.—Worship.
11:00 a.m.—Sunday school.
7:30 p.m.—Children's Christmas service.
Monday, Dec. 25—10:00 a.m.—Waltham League Christmas Mass.

NORTH LAKE METHODIST CHURCH
The Rev. George Nevin, Pastor
Sunday, Dec. 24—9:30 a.m.—Worship service.
10:30 a.m.—Sunday school.

Rebekah Lodge Holds Christmas
Chelsea Rebekah Lodge family pot-luck supper, Lodge hall Thursday, Dec. 21. Dining room committee, led by Mrs. Donovan Swamy, Marion Higgell and Mrs. Chalks, prepared the supper. The tables decorated in the spirit of Christmas.
Each child present at the party received a gift during program of which Mrs. D. Alstetter and Mrs. Homer were in charge. The entertainment included singing, a story read by Brennan, a poem read by Richard Keezer and a dramatization of the centennial of the Rebekah function by Joy Boyer.
Miss Susie Williams was oldest member present, and Betty Rowley, the youngest guest.
A wise man knows just what to do and when to stop.

ST. JACOB EVANGELICAL LUTHERAN CHURCH
14100 Old US-12
The Rev. Andrew Bloom, Pastor
Sunday, Dec. 24—8:15 a.m.—Worship service.
9:15 a.m.—Sunday school.
10:15 a.m.—Worship service.

FIRST CHURCH OF CHRIST, SCIENTIST
1883 Washtenaw Ave., Ann Arbor
Sunday, Dec. 24—Golden Text of this week's Bible Lesson is from Isaiah: "Unto us a child is born, unto us a son is given; and the government shall be upon his shoulder."
Lesson-sermon on "Christ Jesus."

BETHEL EVANGELICAL AND REFORMED CHURCH
(United Church of Christ)
Freedom Township
The Rev. T. W. Menzel, Pastor
Sunday, Dec. 24—10:00 a.m.—Sunday school Christmas Program.
7:30 p.m.—Family Christmas service.

ZION LUTHERAN CHURCH
Corner of Fletcher, Waters Rds. (Rogers Corners)
The Rev. John R. Morris, Pastor
Saturday, Dec. 23—No youth instruction classes.
Sunday, Dec. 24—9:00 a.m.—Sunday school.
10:15 a.m.—Worship.
7:30 p.m.—Family Christmas Eve Sunday school program, "How Great a Gift."
Monday, Dec. 25—9:30 a.m.—Christmas worship.

SALEM GROVE METHODIST CHURCH
The Rev. George Nevin, Pastor
Sunday, Dec. 24—10:00 a.m.—Sunday school.
11:15 a.m.—Worship service and communion.

WATERLOO VILLAGE CHURCH
(Evangelical United Brethren)
The Rev. Wilbur Silvernail, Pastor
Sunday, Dec. 24—10:00 a.m.—Sunday school.
11:15 a.m.—Worship service.
7:00 p.m.—Annual Sunday school Christmas program.

GREGORY BAPTIST CHURCH
The Rev. Millard Horon, Pastor
Sunday, Dec. 24—10:00 a.m.—Worship service.
11:15 a.m.—Church school.
6:30 p.m.—Baptist Youth Fellowship.
7:30 p.m.—Evening worship.

LIFELINES:

A Blessed Christmas to You

Christmas begins with Christ, the virgin-born Christ-child, our Saviour. The Babe of Bethlehem was not merely a remarkable child but the Son of God who in His infinite grace was conceived by the Holy Spirit and born into this world in the form of a man.

Jesus Christ in His infinite love did not begin when He was born in a stable and laid in a manger. He left heaven's best to come to this world to be the Saviour of mankind. He was offered as a free gift, for "God so loved the world, that He gave His only begotten Son" (John 3:16).

God's gift to the world was despised and rejected 2,000 years ago and in the life of every person who has rejected Him since that time there has proved to be a fatal defectiveness. Only by accepting the free gift of eternal life through Christ, can we know the true meaning of Christmas and the forgiveness of sin and life everlasting. Christ said, "Behold, I stand at the door and knock; if any man hear my voice, and open the door, I will come in to him, and will sup with him, and he with me." (Revelation 3:20), and 2ndly, "I say unto you, he that heareth my word, and believeth on him that sent me, hath everlasting life, and shall not come into condemnation; but is passed from death unto life" (John 5:24).

Begin this Christmas season with Christ by accepting the gift of God, (which) is eternal life through Jesus Christ" (Roman 6:23). "For by grace are ye saved through faith; and that not of yourselves; it is the gift of God" (Ephesians 2:8).

Immanuel Bible Church
Rev. Frank C. Frinkle, Pastor. Phone 475-8936.

ST. JOHN'S EVANGELICAL AND REFORMED CHURCH
(United Church of Christ)
Francisco
The Rev. Stephen Peterson, Pastor
Sunday, Dec. 24—9:30 a.m.—Morning worship.
9:45 a.m.—Sunday school.

IMMANUEL BIBLE CHURCH
145 E. Summit St.
The Rev. Frank C. Frinkle, Pastor
Sunday, Dec. 24—9:45 a.m.—Sunday school.
11:00 a.m.—Morning worship.
Nursery available for worship service and Sunday school.
Wednesday, Dec. 27—7:00 p.m.—Adult choir practice.
7:30 p.m.—Junior choir practice.
7:30 p.m.—Prayer service and Bible study.

ST. MARY'S CATHOLIC CHURCH
The Rev. Fr. Francis Maliszewski
Saturday, Dec. 23—10:00 to 12 noon—Confessions.
3:00 to 5:00 p.m.—Confessions.
7:30 to 9:00 p.m.—Confessions.
Sunday, Dec. 24—Masses at 6:30 a.m., 8 a.m., 10 a.m. and 11:30 a.m.
12:00 p.m.—Midnight Mass.
Monday, Dec. 25—Masses at 6:00 a.m., 8 a.m., 10 a.m. and 11:30 a.m.

SUNDAY'S SERMON

HAPPINESS

Ask ten friends to give you their definition of the word "happiness" and no two answers will be exactly the same.

Happiness is a relative thing. Each man, whether he admits it or not, searches constantly for happiness. And, regrettably, many people who find it are unable to recognize it.

But the wise man learns, often late in life, that he never found happiness because he did not really know what he was searching for. He realizes that happiness is incorrectly associated with getting and receiving; to often it is not paired with the idea of giving.

Happiness comes when we realize that we have served some useful purpose in this life; that we have, in some small way, helped another human being; that we have found a measure of peace with God and with the world.

So look not for happiness with a lantern in the dark of night. You will not find it. Look for happiness in the things you do. Look for happiness in what you are; in the value you have to yourself and to others.

Peace and Joy

We echo the joyous voices of the carolers in bringing you Season's Greetings for this time of peace and harmony.

METHODIST HOME CHAPEL
The Rev. John Fall, Administrator
The Rev. Wm. Johnson, Chaplain
Sunday, Dec. 24—8:45 a.m.—Worship service.
7:00 p.m.—Special Christmas Eve service.

FIRST UNITED PRESBYTERIAN CHURCH
Unadilla
The Rev. John Jeffrey, Pastor
Sunday, Dec. 24—9:45 a.m.—Church school.
11:00 a.m.—Worship service.
Every Tuesday—8:00 p.m.—Choir practice.

CHURCH OF CHRIST
19661 Old US-12, East
R. D. Parnell, Minister
Sunday, Dec. 24—10:00 a.m.—Bible study.
11:00 a.m.—Worship service.
5:00 p.m.—Worship service.
Bible study each Wednesday at 7:00 p.m.

Woman's Relief Corps

Women's Relief Corps met Monday, Dec. 18 for a Christmas party at the home of Mrs. Watson Hart. The dessert-luncheon was followed by a short business meeting. The 12 members present then exchanged gifts and enjoyed a social hour. Mrs. Harold Knott was co-hostess for the occasion.

CLOSED ALL DAY CHRISTMAS

FOOR MOBIL SERVICE

ALVIN FOOR
Chuck Reed - Bob Steele - Gerald Wenk
Tom Dunlap - Bob Reed



Merry Christmas

Up hill, down dale we go to spread glad tidings of joy and festivity! It would take ten coaches to hold all the good wishes we have to give our good friends and patrons for a most happy and hearty holiday season and many, many more still to come!

CHELSEA DRUG

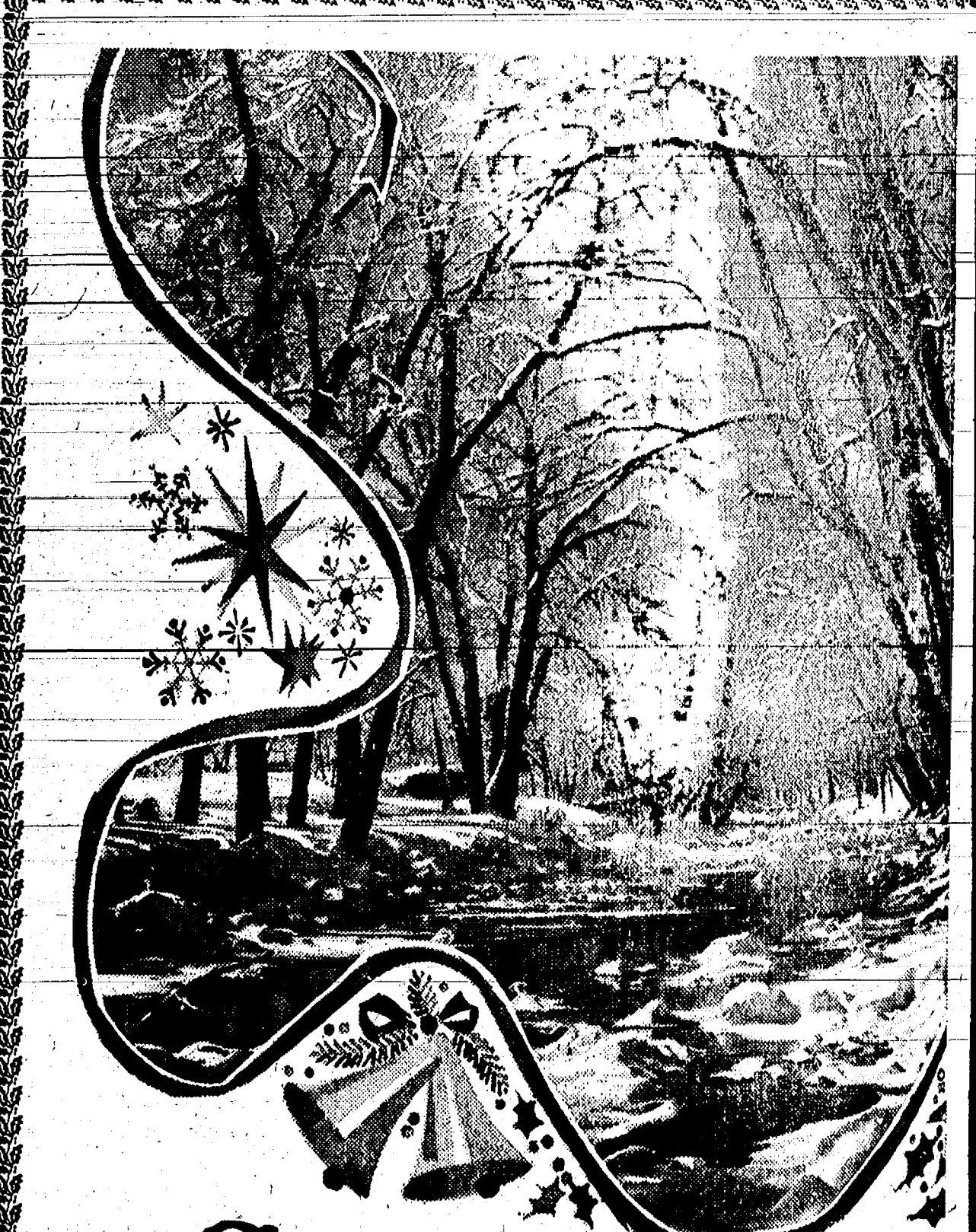
Silent Night

Christmas comes, and renews the glorious inspiration of that Holy Night long ago. To all, we wish a holiday season rich in many joys and blessings.



CHELSEA ASSOCIATED BUILDERS

JOHN PIERSON • LEON KOCH • DONALD EDER
Robert Bauer • Ray Knickerbocker • Arthur Barth
Donald Pierson • Jay Hanke



GREETINGS

Our warmest wishes to you and your family for a holiday season that's brimming with glad times and good fellowship. May your blessings be many, enriching your days and bringing you joy.

Sinclair Oil Products
DILLMAN WAHL JERRY HERRICK

Dean Hepburns Observe 25th Anniversary

Mr. and Mrs. Dean Hepburn of 717 W. Middle St., were honored Sunday, Dec. 17 with a surprise anniversary party given by their daughters, Lois, Carol, and Kathy, to celebrate their 25th wedding anniversary.

Attending the event were several friends and relatives from Chelsea, Ann Arbor, Grass Lake, Ypsilanti, Gregory, Stockbridge, and Saginaw.

A three-tiered wedding cake, decorated with white sugar bells and topped with a silver bell, was made for the event along with a groom's cake. Mrs. Harold Scott of Chelsea cut the cake. Mrs. Norwood Bush of Chelsea poured coffee, and Mrs. Joel Kruss, also of Chelsea, poured punch.

The Hepburns received many beautiful and memorable keepsakes from their friends and relatives.

Obermeyer-Papsdorf Engagement Told

Dr. and Mrs. Charles George Obermeyer of St. Louis, Mo., have announced the engagement of their daughter, June Lyon Obermeyer, to Ronald Paul Papsdorf, son of Mr. and Mrs. Paul Papsdorf of 1715 Waterloo Rd. The bride-elect attended Michigan University and is now serving with the United States Navy at Davisville, R. I. The wedding will take place next spring.

First-things-first is a good rule of thumb to use in painting. When painting a room, begin with the ceiling. Next, walls should be painted at the upper left hand corner and working downward to the floor. If you're a "lefty" just reverse the order. Paint woodwork and trim last.



ENGAGED: Mr. and Mrs. Myron Carlson announce the engagement of their daughter, Sandra Lee, to Charles Schmunk, son of Mr. and Mrs. Arthur Schmunk of 1845 Trinkle Rd. Sandra, a graduate of Cherry Hill high school in Inkster, is now working toward a degree in Special Education at Eastern Michigan University. Charles, a 1965 graduate of Chelsea High school, is presently attending Washenaw Community College. The couple met last spring at Easton and are planning their wedding for Feb. 3. They will be married at Our Master Lutheran Church, Inkster.

VFW Auxiliary Hears Report on Cancer Protection

The December combined business and social meeting of the Ladies Auxiliary to Veterans of Foreign Wars Post 4071 was held Monday evening at Rebekah Hall.

Business conducted at the meeting included voting to provide a Christmas basket for a needy family; planning a hospital party to be held Jan. 23 at Ypsilanti State Hospital and arranging for distributing packages of cigarettes to each patient attending; and authorizing payment of more than \$100 as the annual premium for cancer insurance for all members of the Chelsea Auxiliary.

A report was read showing that a total of \$314,403.90 had been contributed this year by the national membership to the National Cancer Aid and Research Fund of the VFW and that of this amount \$194,187.04 had been made available to cancer victims in the form of grants to cancer research centers at Bar Harbor, Me. The report was concluded with the notation that in the past 20 years a total of \$3 million had been contributed by the VFW to help members and for cancer research.

Monday's meeting also was designated as an inspection meeting and Mrs. Ruth Otto of Ann Arbor, Sixth District VFW Auxiliary president, inspected all records of the local Auxiliary and found them in good condition.

During the social hour which followed the business session Christmas refreshments were served by a committee with Mrs. Dorothy Lentz as chairman.

Durable press is the ability of a garment to keep its shape throughout its life. This means sharp seams and smooth appearance of fabric after many washings.

Older Adult Group Enjoys Christmas Party

The Christmas theme was carried out in the table decorations at the monthly dinner and Christmas party of the Older Adult Group of the Methodist Church Saturday, Dec. 16. In charge of decorations for the event were Mrs. Alfred Hoelzer and Mrs. Robert Walker of Ann Arbor; they used large numbers of candles to accent the greens and Christmas figurines, which were attractively arranged on all the tables. The dinner was held in the church social center with 43 present.

The after-dinner program included a Christmas story, "The Holy Night," read by Mrs. Russell Bernath. She concluded by reading the familiar "Twelve Days Before Christmas."

Mrs. Herbert Paul, in the devotional service, read the Christmas story as recorded in the scriptural Gospel of Luke and led the group singing of Christmas hymns and carols.

Three members of the group were honored in observance of their December birthdays—Mrs. Nancy Taylor, the Rev. L. I. Lord and Mrs. Carl Schlosser.

Mrs. Schlosser and her husband also were honored in observance of their golden wedding anniversary which occurs on Christmas day. Their two daughters, Mrs. Arto-Dunkeborger of Kalamazoo and Mrs. Raymond Schairer, had baked and decorated an anniversary cake for the dinner Saturday.

The birthday cake was provided by the Misses Jennie and Florence Ives.

Cards were signed to be sent to Mrs. Helen Kilmer and the Rev. Lloyd Merrell at the Methodist Home and Mrs. Mabel Foster at Cedar Knoll Rest Home at Grass Lake.

The meeting closed with group singing of "Silent Night."

It was announced that the next regular meeting is scheduled for Jan. 20 with Mr. and Mrs. Elba Gage assigned to be in charge of the table decorations.

EPISCOPAL CHURCH WOMEN

ECW met Thursday, Dec. 14 at St. Barnabas Episcopal church. An Advent prayer and reading from St. Luke on the Nativity were given.

The chairman of the Bishop's committee was present and announced the Christmas services as follows: Christmas Eve carol service at 7:30 p.m. and Holy Communion at 8 p.m. Holy Communion will also be served at 10 a.m. Christmas Day.

It was announced that the annual meeting of the Church Women United would be held at St. Barnabas church Friday, Jan. 12 at 1 p.m. with dessert, followed by the meeting.

The regular meeting adjourned. The annual meeting was called to order at 9:15 p.m. and reports were given by the secretary, Mabel Brown; the treasurer, Edith MacDougall; and the president, Catherine Wojcikowski. The nominating committee reported a slate of officers for 1968. The members voted in favor of the following officers: president, Marjorie Beaumont; vice-president, Helen Cottrill; secretary, Marie O'Brien; and treasurer, Edith MacDougall.

The annual parish meeting and dinner will be held Wednesday, Jan. 24 at 6:30 p.m.

The next meeting of the ECW will be Thursday, Jan. 18. Christmas refreshments were served by the hostess, Jenn Atkinson.

It is against human nature to give up an advantage without objecting.

TIPS for your TOP from



TODDY and FRAN

It is soon "next year"—unbelievable, but true. Start it out right with a resolution to treat yourself to a routine beauty treatment—weekly, at all points that will honestly make your weeks next year better than they would be without it. More beautiful, confident, happier. And it isn't too late yet to put this same challenge under the Christmas tree for the women of all ages on your list who enjoy, as you do—all of us do—being as pretty as possible. We have gift certificates for you to make shopping, even this late, a success. We've closed the day after Christmas and the day after New Year's.

Magic Mirror Beauty Salon
Phone 665-0816
5585 Jackson Rd., Ann Arbor



Rosemarie Porter, Michael Daniels Wed at Methodist Home Chapel

With the Swedish heirloom gold wedding band that had once been worn by his great-great aunt, Paul Michael Daniels exchanged wedding vows with Miss Rosemarie Porter at sunset Friday, Dec. 15 in the quiet setting of the Methodist Home Chapel. The Rev. William Johnson officiated at the double-ring ceremony witnessed only by the couple's parents, Mr. and Mrs. Willis Porter and Mr. and Mrs. James K. Daniels; the

bride's brother, John Porter; their honor attendants, Miss Ann Schup, Miss Marilyn Smith and William Coltre; and close family friends, Mr. and Mrs. Frederick Schultz.

Following an old German tradition, the bride was escorted to the altar by the bridegroom. She wore a simple white wool coat dress designed and made by her mother, and she carried a single red rose.

The new Mrs. Daniels, a graduate of Chelsea High school, is attending Michigan State University. Her husband graduated from Chelsea High school, attended Michigan State University, and is employed by the Chelsea Lumber Co. After the Christmas holidays, Mr. and Mrs. Daniels will make their home in Lansing.

Senior Citizens Honor December Birthdays

Senior Citizens' December birthday pot-luck dinner was held Monday, Dec. 11 at Korner House. The guest table was centered with a Christmas arrangement and a huge Christmas tree lighted up the room.

After dinner the 25 members present enjoyed playing progressive euchre. Mrs. Herman Eisele received the traveling prize.

The December business meeting is scheduled for Tuesday, Dec. 26 at 7:30 p.m. at Korner House. The Senior Citizens' euchre tournament will resume Friday, Jan. 19 at 7 p.m. Members not enrolled for the winter tournament should call 475-8068.

Postpone a visit until everything is "all set" and you will stay at home.

CHARM BEAUTY SALON
4396 CLEAR LAKE ROAD
(Formerly of Grass Lake)
Two Operators - Hair Styling and Wig Service
PHONE 479-4147

Engagement Told

Announcement is being made of the engagement of Mrs. Barbara Mopyana Push, daughter of Mrs. Lambert Mopyana, 410 Garfield St., and the late Mr. Mopyana, to Douglas Robeson, son of Mr. and Mrs. Clyde Robeson of Gregory. The couple, both employed at Dana Corp., have not set a wedding date.

45th Anniversary

Mr. and Mrs. Frank Dyer celebrated their 45th anniversary Sunday, Dec. 17 with a dinner at St. Paul United Church of Christ. Attending the occasion were guests from Utica, Madison Heights, Berkley, Ferndale, Jackson, New Hudson and Chelsea. The Dyers received many lovely gifts.

Telephone Your Club News
To GR 5-3581

Say "Merry Christmas" in a very special way

BULOVA
Winans Jewelry Store

Best wishes to you for a joyous day
May your Christmas be bright and happy
VOGEL'S STORE

Joy
The message of Peace and Joy resonates across the land, heralding that first Holy Night when the beautiful Christmas story was begun. Our sincere wishes to all for a Merry Christmas.
PATTY ANN SHOPPE

The Peace and Promise of Christmas
Humble shepherds and mighty kings gave witness to the wondrous event of the birth of the Christ Child, and knew the great joy and peace that fills every heart on Christmas Day. May this gladness and contentment remain with you and those near and dear to you, enriching your lives in fullest measure.
Merkel Brothers
Ferd. • Norb. • Gert. • Helen. • Leola. • Donna. • Bob. • Jack
Florence. • Elton. • Paul. • Dan. • Carl

Extra Holiday Duty Set By State Police

Special holiday traffic patrols will be operated by the Michigan State Police for the Christmas and New Year week-ends, Col. Fredrick E. Davids, director, reports.

Davids noted that Michigan's traffic toll so far this year is showing a reduction of about 200 deaths compared with the same period of 1966, a decrease of about 10 percent.

In a traffic safety plea to motorists, he added, "Let's extend this improved traffic record right through to the end of the year. I'm sure the continued co-operation of drivers and pedestrians can effectively counter the added risks of this season. Above all, drive and walk so that you keep your holiday unspotted by an accident."

The Christmas patrols will begin at noon Friday, Dec. 22 and continue until midnight Monday, Dec. 25. The New Year week-end patrol hours will be from noon Friday, Dec. 29, until midnight Monday, Jan. 1.

Maximum patrol coverage will be provided by the State Police from 3 p.m. to at least 3 p.m. each day of the holiday periods. Special attention again will be given to the sections of highways having bad accident experience.

Last year there were 30 persons killed in 24 fatal accidents during the Christmas period and 26 deaths were recorded for the New Year week-end.

Wheels Have Lasting Appeal

IN EVERY AGE, wheel toys capture children's hearts. Today's youngsters thrill to Christmas gifts of miniature, motorized racing cars. More than a century ago, the wheels might have adorned a diminutive "horsedrawn" buggy of tin. But the thought is always the same: to please a child.

AMONG THE FIRST to make playthings-in-quantity for American children were the tin-toy manufacturers of the 1850's, says Mary Childs Black, director of the Museum of American Folk Art. Often the tin toys were wheel toys, with delicate, open-spoked wheels repeated in a wide variety of vehicles and styles.

TIN-WHEELED TOYS pictured here are from the collection of Mr. and Mrs. Bernard Barenholtz, Princeton, N. J. After founding their own toy firm in 1950, the Barenholtzes developed an interest in old as well as new toys. Their tin toy collection began in 1956, with a milk wagon painted blue—a gift to Mrs. Barenholtz.

PROFITABLE HUNT—Centralia, Ill.—Three teen-age hunters came home recently with a lot more than rabbits. The trio found a glass jar containing \$1,300 in savings certificates and \$1,300 in cash. Police said the certificates were issued in the name of an elderly man now living in a nursing home.

subscribe today to The Standard!



ANTIQUE CHRISTMAS CARD inspired by robin legend was designed by Jonathan King in London in 1867. The robin wears a red vest because he fanned the embers of the stable fire, to keep the Christ Child warm, legend says. The well-preserved greeting, a century-old this year, is from the Hallmark Historical Collection.

Robin Lives on in Holiday Legend of the First Christmas

What's a robin doing on a Christmas card? More familiar as a harbinger of spring, bobbing along with a fat worm in his mouth, the robin is nevertheless a centuries-old Christmas symbol. And one of the earliest Christmas cards, a 100-year-old English greeting, features an illustration of a robin on a snow-band.

Because legend says the robin played a vital part in the first Christmas, Yuletide decorations and cards have long celebrated the cheery red-breast. This year's crop of Christmas cards included an assortment of robin designs, many depicting the bird at the manger scene.

One card published for this year featured a retelling of the robin legend, reports Mrs. Jeanette Lee, design director for Hallmark cards.

According to the legend, the Holy Family was not alone in taking refuge in the stable at

Bethlehem. Perched on a rafter, a small brown robin watched as the three Magi presented their gifts to the newborn Christ Child. The robin seemed to understand that something wondrous was happening. After the departure of the Magi, when the Holy Family was asleep, the robin noticed that the stable fire was dying. Only a few coals smoldered. Hovering above the coals, he flapped his wings, fanning the embers to life. As the fire burned brighter, flames singed the robin's breast, scorching his brown feathers a brilliant red gold.

Through the night he fanned the fire to keep the Child warm. Ever since, the robin has worn a red vest, symbolizing his gift.

As a Christmas symbol, the robin embodies the spirit of giving. Like the Magi, the robin gave a precious gift, and he gave it at the cost of personal sacrifice. Thus the robin's gift suggests the deeper meaning—the giving of one's self—the legend notes.

view, you'll have to agree that, by and large, we do solve our problems.

Furthermore, when the war does come to an end, a large part of the world will remain hungry for goods and needs to be built up industrially. Nor have we in America arrived at the ultimate summit of our own standard of living.

A person can do himself a great deal of harm by taking too gloomy an outlook at the future. We must take care that we don't push ourselves into investments simply by being overly cautious.

Having said that, let me hasten to add that I'm not advocating wild-eyed speculation or unbridled in-and-out trading on the stock market either. But I do believe sensible investments in well managed companies offer a good future regardless of the problems which may beset the world in the next six months.

Have you a question about investing? Write to: T. B. O'Hara, National Association of Investment Clubs, Dept. S, Box 1056, Detroit, 48231.

In the legend and lore of Christmas, holly has both a merry and melancholy significance. Fairies, so it is said, loved the holly. They found its leaves such a comforting shelter that even after holly was cut from the trees, they lingered about, allowing themselves to be carried indoors, where they protected the home from evil spirits.

Later, Christian believers saw the thorny leaves and bright red berries of the holly as symbols of the Crown of Thorns and the sacrifice which the Christ Child, grown-to manhood, made on Calvary.

Give wastebaskets a coating of wax inside and out. This helps to prevent dust from accumulating and gives the baskets a neater appearance.

One of the first Christmas cards ever published, a small two by three-and-a-half inches greeting printed in London in 1862 by Goodall and Son, features a robin presiding over a pastoral winter scene, framed by paper lace.

JV Cagers Lose to Both Milan, Lincoln

The Chelsea Junior Varsity basketball team had a discouraging week-end, losing to both Milan and Lincoln.

The JV's lost to Milan last Friday evening by a score of 47 to 56. The loss marked the second of the season for the Junior Varsity team.

Milan opened up the scoring early in the first quarter but the Bulldogs kept the margin of difference slim, with Jim Wojicki leading in the scoring for Chelsea. At the end of the first quarter, Milan held a three-point lead over Chelsea with a 12 to 9 score.

The Bulldogs fought on and brought up a 13 to 13 tie early in the second quarter. Milan soon broke the tie but the Bulldogs determined to take the lead, fought to a 20-20 tie. Chelsea then broke the tie to go out in front for the first time in the game. The Bulldogs held a one-point lead at halftime, with a 25 to 24 score.

The Bulldogs extended their lead in the third quarter, but Milan kept the pressure on and soon tied the game at 34-all. The determined Bulldogs again broke the tie, and again, they held a one-point lead at the end of the third quarter with a 37 to 36 score. The Reds shot out in front in the final quarter, picking up a total of 20 points to bring up the victory over Chelsea. The Bulldogs fought valiantly in the final quarter with Art Favely and David Conklin leading in the final scoring for Chelsea.

High-point man for Chelsea was Jim Wojicki, who scored a total of 18 points. David Conklin followed with a total of 14 points. Other boys scored as follows: Art Favely, five points; Rick Slane, four points; Mike Bassett, three points; Jim Taylor, two points; and John Hepburn, one point.

Leading in the scoring for Milan were John Cosner, with a total of 19 points, and Bill Clay with 17 points.

Things went from bad to worse for the JV's when they lost to Lincoln Saturday, by a score of 39 to 63. The Railsplitters took a substantial lead in the first quarter but the Bulldogs put up a good fight. The score at the end of the first quarter was 10 to 18 in favor of Lincoln. In the second quarter, both teams doubled their scores, making the halftime score 20 to 36.

The Railsplitters extended their lead in the second half of the game, scoring a total of 14 points in the third quarter and 13 points in the fourth quarter. Nevertheless, the Bulldogs continued to fight valiantly, with Jim Wojicki and Floyd Boyce leading in the scoring. Despite the efforts of the Bulldogs, the Railsplitters won with a final score of 39 to 63.

Jim Wojicki was again the leading scorer for Chelsea, totaling 17 points. Floyd Boyce was next with a total of six points. Dave Conklin and John Taylor each made four points. Other individual scores were: John Hepburn, three points; Art Favely, two points; Doug Schoenberg, two points; and Don Nutt, one point.

Leading scorers for Lincoln were Harry Shukat with a total of 18 points and Wayne Held with 12 points.

The Junior Varsity team now has a season record of one win and three losses. The JV's opened their season Dec. 1 in a game against Dundee. The final score of that game was 41 to 65 in favor of Dundee. However, the Bulldogs came back the following Tuesday to defeat Stockbridge by a score of 62 to 58.

All Aliens Must Register During Month of January

The nation's 32,000 post offices will participate in the registration of about 3½ million aliens next month.

Under the Immigration and Nationality Act of 1952, every post office is responsible for providing registration cards and turning the completed cards over to the Immigration and Naturalization Service.

The cards must be picked up personally by registrants and they may be handed in to the post office when completed or turned in directly to Immigration and Naturalization offices.

Post Offices will accept the cards only until the end of January, the month in which the aliens are required to register. Those who have not registered by Jan. 31 must go to Immigration and Naturalization offices to do so.

Cards and all materials needed by post offices in the registration are being mailed to the offices this month, but registrants may not obtain the cards until January.

Alien registrations have been increasing. In January, 1966, about 3.3 million aliens registered, and in January, 1967, the total was about 3.4 million. Further increases are anticipated in 1968.

The Post Office Department is reimbursed for its role in the registration by the Immigration and Naturalization Service at about 9 cents for each registrant.

Aliens are not necessarily restricted to registration at their "home" post office. If away from home, they may register at a nearby post office.

Graciousness is a virtue many people mistake for weakness.

The Hi-Light

Edited by Students of the Chelsea High School Journalism Club

By Bonnie Parnell
CHS Chorus concert was held at 2:30 p.m. in the auditorium Sunday, Dec. 12.

The Freshmen basketball game Dec. 14 resulted in a Chelsea home victory over Dundee, 67-57.

The Bulldog wrestling team also sported a victory over Dundee the same night with a final score of 48-6.

A big issue at the high school now is the possibility of forming a student court for student discipline. No plans are definite but the establishment of a student court by the second semester of this year is being considered.

The Bulldogs met Lincoln away game Saturday, Dec. 16.

Latin Club sponsored a for the members in the CHS on Dec. 14. The event included caroling and other entertainers.

A dress review sponsored by the Home Economics Department will be held at 7:30 p.m. Dec. 15.

Following the dance sponsored by the class was held.

Christmas vacation begins day, Thursday, Dec. 21.

CHS Bulldogs met Lincoln home basketball game, Friday, Dec. 15. Following the game dance sponsored by the class was held.



Silent Night

At this joyous season, we extend our warmest greetings to you, hoping all is calm, all is bright as on that Holy Night long ago. May all the blessings of Christmas be yours.

DAVID ROWE AGENCY

Farm Bureau Insurance

Merry Christmas

We join Santa's Yuletide song, wishing you a Happy Holiday season and expressing sincere thanks for your patronage.

TODAY'S INVESTOR

By Thomas E. O'Hara, Chairman, Board of Trustees of National Ass'n of Investment Clubs

Q. I bought Admiral and National Video at high prices. Shall I sell them at a loss, or wait and see if they do better?

A. Admiral has a long record of growth and profitability, just recently its earnings have been down. National Video has yet to establish a record which would tend to give a confident picture of its future.

Q. I would like some information on either bonds or convertible stocks, and I don't think it makes much difference which you buy. Convertibles are a way of having your cake and eating it. If the firm is a success, your convertibility rights enable you to acquire the common shares when this would give you a capital gain, and in the meantime you probably have been receiving higher dividends than you would have on the common alone.

I'm sure there are many brokers who would be pleased to give you information about the many securities with convertible features.

Q. In these days of inflation and insecurity, what is the best investment in case of a severe depression? I remember the 1930's and am a bit fearful, even of banks.

I think you would be making a mistake in investing as if depression were imminent. You can, of course, put your money into accounts with banks or savings-and-loan associations, where the federal government guarantees your deposits up to \$15,000. That would be about as safe as anything you could do.

I suggest that you take the long view on investing. No one knows what is going to happen in the immediate future. That, according to most economists, depends a lot on whether or not the war in Vietnam is settled. But if you take the long-term

L. S. SCHAIBLE Insurance

A JOYOUS CHRISTMAS

Your wonderful patronage this past year has been most overwhelming. We are looking forward to serving your musical needs throughout the coming year.

AL NALLI MUSIC

Virginia Rowe, Manager

Rejoice

... for Christmas is here! One of the season's bright pleasures is exchanging holiday greetings. This pleasure is ours as we say, "Thanks" to our many loyal customers.

HERBERT PAUL

Plumbing, Heating and Well-Drilling

TO RENT

Farm house (and 230 acres) 11380 Roepeke Rd., near M-52. Near Chelsea.

Phone (Detroit) 342-0001

Early Christmas Cards

One of the first Christmas cards ever published, a small two by three-and-a-half inches greeting printed in London in 1862 by Goodall and Son, features a robin presiding over a pastoral winter scene, framed by paper lace.

A VERY MERRY CHRISTMAS TO ALL

Time for jingle bells, Santa and holiday laughter... hurry and scurry, and toys warm and furry... for spirits as bright as the lights on the tree... for wishes as warm as wishes can be. Merry Christmas!

A Merry Christmas from:

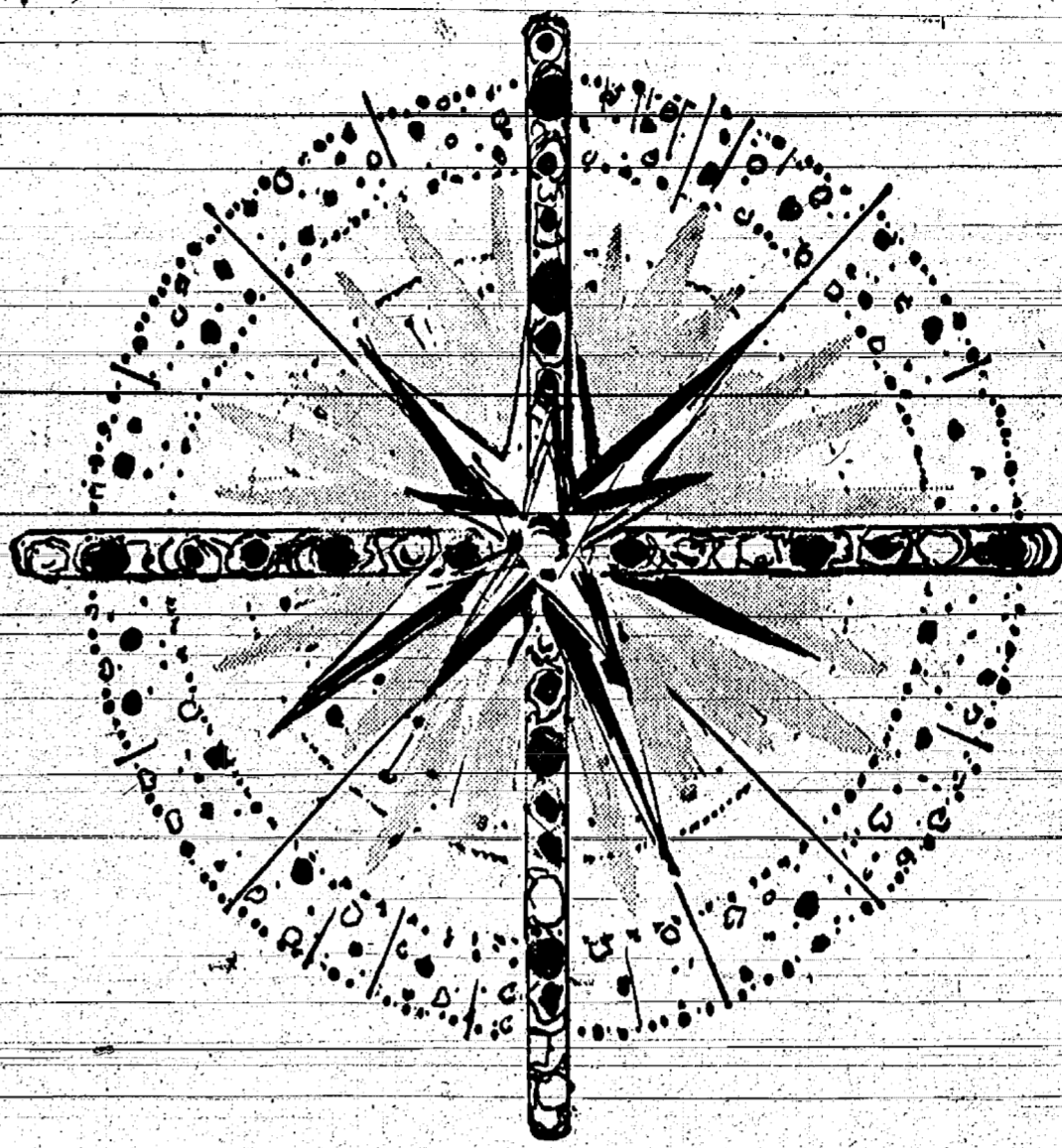
"Rolly" Spaulding	Jeff Spaulding	Don Knoll
Dick Harvey	Stan Weir	"Pats" Kunzelman
Fred Klink	Art Moore	Dick Sande
Charlie McDaniels	Paul Weber	Ed Bennett
Carl Benjamin	Stan Schiller	Pete DeFaut

Spaulding Chevrolet Sales & Service

Your Chevrolet Dealer Since 1929

Chelsea, Mich.

Joy and Peace at Christmas



Around us, the wonder of Christmas spreads its joy and warmth. The radiance of a Star shines into our hearts, as once it shone above a sacred manger, heralding the miracle of the Holy Birth. As you observe Christmas with those near and dear to you, may you rejoice anew at the true, deep meaning of this most glorious time. And may the peace and joy of the season be an ever present blessing, to light the way for all men, everywhere.



CHELSEA MILLING COMPANY

... Producers of "JIFFY" Mixes

Legal Notices

MORTGAGE FORECLOSURE SALE... Act of Congress and existing pursuant to the Federal National Mortgage Association Charter Act, Mortgage, which mortgage is dated 1966 and recorded in the Office of the Register of Deeds for Washtenaw County, Michigan on June 10, 1966, in Liber 1182, Page 215, Washington County Records, on which mortgage there is claimed to be due on the date of this notice, principal and interest and other charges allowed by said mortgage...

NOTICE IS HEREBY GIVEN that on February 6, 1966, at 10:00 o'clock in the forenoon, said mortgage will be foreclosed at the Court House in the City of Ann Arbor, Michigan, that said mortgage is held by a sale at public auction... ORDER OF PUBLICATION... State of Michigan, Probate Court for the County of Washtenaw, Michigan...

ORDER OF PUBLICATION... State of Michigan, Probate Court for the County of Washtenaw, Michigan... ORDER OF PUBLICATION... State of Michigan, Probate Court for the County of Washtenaw, Michigan... ORDER OF PUBLICATION... State of Michigan, Probate Court for the County of Washtenaw, Michigan...

Understanding Snowshoe Hares... 40 Grove Street, Whitmore Lake, Michigan, December 6, 1967. Jack Becker, Secretary. MORTGAGE SALE - Default having been made in the terms and conditions of a certain mortgage...

IN THE OPEN... By Lee Smits. Turn thousands of deer hunters loose in the woods and some of them are sure to return with tales of weird adventures. It is probable that many of these tales will be true.

It was the young hunter's first deer. Not merely his first. When the officer went with him to the fallen buck they discovered THREE DEAD DEER! The officer helped the kid dress them out, tagged the biggest one and carted the other two away to nourish hospital patients.

THEY HOMELITE'S GREAT NEW XL-104 CHAIN SAW... The family that used to be proud of one automobile now finds it necessary to have two or three. Hark! Decorative pictures of objects on plain walls in a location that needs some interest.

AGRICULTURE in ACTION... by M. L. Wood. "Resolved—that our own hungry people be fed, instead of giving food and money to foreign countries." This proposed policy statement offered at a county Farm Bureau meeting in Michigan WAS NOT ADOPTED.

BLIND GIRL DRILLS... Braintree, Mass.—During the half-time of the Braintree-Milton Thanksgiving game, fans were entertained by the Braintree High School Drill team. Everyone was thrilled by 16-year-old Joanie Hyland's performance.

Give Plants More Light During Winter... When shorter days prevail, let there be more light for your indoor plants. Expose them to several hours of basking under either fluorescent lights or incandescent bulbs.

MIKE'S ANTENNA SERVICE and Speaker Installation... Pre-wired homes for TV... For Free Estimate, Call Pinckney 878-3258

CROSSWORD PUZZLE... ACROSS: 1. Ecclesiastical surplice, 2. Goad, 3. Egg, 4. Muscular twitch, 5. Beverage, 6. What Rand's Atlas did, 7. Tom, 8. Forearm bone, 9. Soaks, 10. Voided, 11. Substrate, 12. Zanthoxylum, 13. Note, 14. Voided, 15. Indefinite article, 16. Musio, 17. Close, 18. Land measure, 19. New, 20. Anger, 21. Gig, 22. Elated, 23. En, 24. Glazed, 25. He, 26. He, 27. Ben, 28. Gal, 29. Quince, 30. Prefix, 31. Mouth, 32. Arid, 33. Affirm, 34. Affirm, 35. Dance, 36. Toilet, 37. Exclamation, 38. Cry of a dove, 39. Sphere

HILLTOP PLUMBING, HEATING & ELECTRICAL CONTRACTORS... 201 SOUTH MAIN STREET, Chelsea, Mich. Phone 479-7851. All Work Guaranteed with 1 Year Free Service. WE SELL FOR LESS - WE WILL SAVE YOU MONEY.

NOTICE... Lima Township Taxpayers... Lima Township Treasurer will be at Chelsea State Bank to collect Lima Township taxes every Friday, beginning Dec. 22, from 9 a.m. to 5 p.m., until further notice.

MIKE'S ANTENNA SERVICE and Speaker Installation... Pre-wired homes for TV... For Free Estimate, Call Pinckney 878-3258

NOTICE... Sylvan Township Taxpayers... Sylvan Township Treasurer will be at 103 N. Main St., Chelsea, to collect Sylvan Township Taxes Monday through Friday, 8 a.m. to 5 p.m., until Feb. 29, 1968.

FRED W. PEARSALL SYLVAN TOWNSHIP TREASURER



Christmas Greetings

We count as blessings our friends and neighbors, who have made our Christmas truly joyful.

Closed 6 p.m. Christmas Eve and all day Christmas.

'Messiah' Performance Slated Monday on TV Program

East Lansing—Handel's "Messiah" is presented by the Handel and Haydn Society, assisted by the Handel and Haydn Symphony Orchestra, Monday, Dec. 25, at 11 a.m. on WMSB (Channel 10), Michigan State University television.

Hailed for more than two centuries as a masterpiece of religious art, the oratorio tells the story of Jesus, from the coming of the Messiah, through the crucifixion, to the promise of life after death.

The work is a dramatic setting drawn from scripture. The story is recounted with musical narratives, solo arias and choral anthems, the most famous of which is the celebrated "Hallelujah" Chorus.

The Handel and Haydn Society introduced Handel's oratorio to the United States on Christmas Day, 1818, in Boston, Mass. Within the last 10 years, the chorus has performed "Messiah" more than 225 times.

Other WMSB highlights include:

STORIES

Helen Shaw entertains children with Christmas stories and music on "Tell Me a Story," Monday, Dec. 25, at 7 p.m.

As her guests gather around the fireplace, Helen tells them about "The Littlest Angel," "Frosty the Snow Man" and "The Other Wise Man," "Christmas Lost and Found," a Davey and Goliath story, in which Davey finds the Christmas spirit by giving to others, is also featured on the program.

OPERA

"N.E.T. Festival" premieres with "Glyndebourne Journal 1967," a documentary on England's famous Glyndebourne Opera Festival, Sunday, Dec. 24, at 3 p.m.

The program highlights the preparation and performance of the two most successful productions of the 1967 festival—a new staging of Mozart's "Don Giovanni," directed by Franco Zeffirelli, and a new version of a rarely performed 17th century opera "L'Ormindo" by Francesco Cavalli.

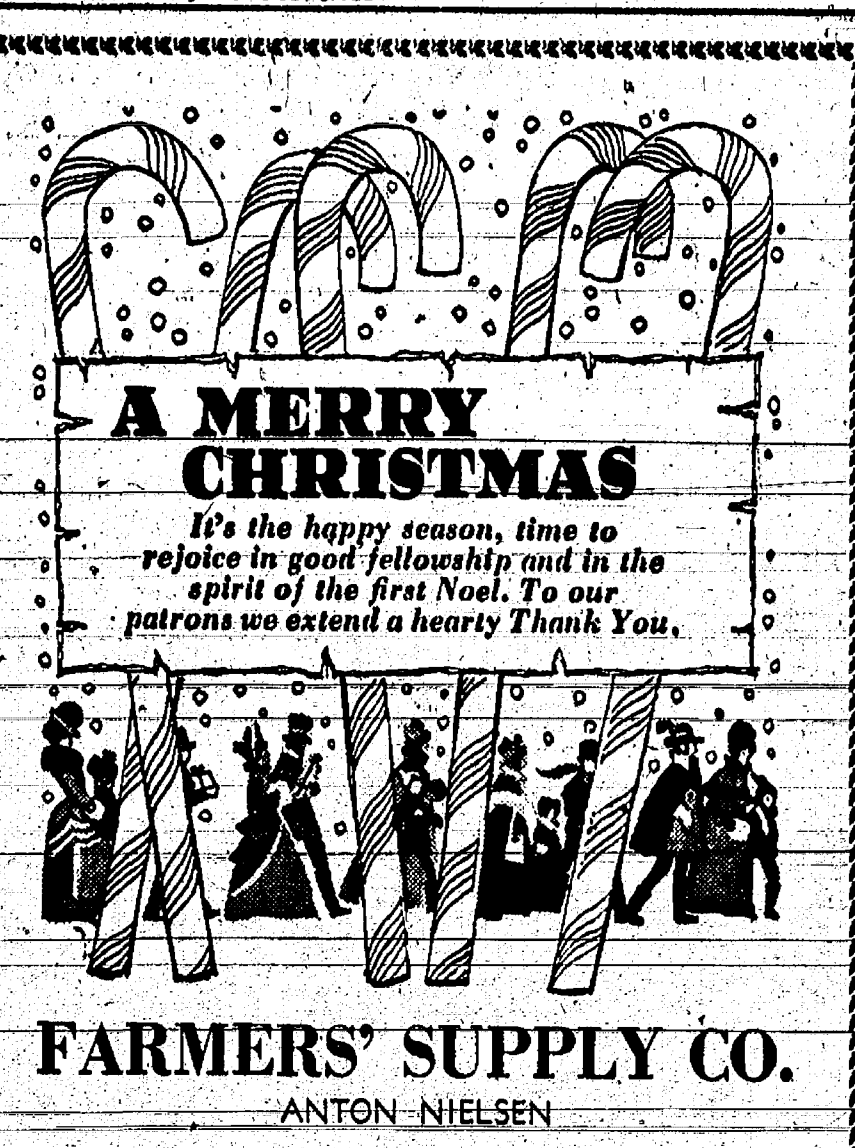
THAILAND

"N.E.T. Journal" presents "April Is the End of Summer," a wide-ranging view of Thailand from guerrilla outpost to opium trail.

Mistletoe Magic

Ancient followers of the Druid religion were the first to regard mistletoe as a sacred plant, say the editors of The New Book of Knowledge. They supposed it to have panacea virtues in warding off everything from witches to disease.

Each year, about the time Christmas is celebrated today, there was a ceremonial rite in which Druid priests, using a golden sickle, cut the mistletoe leaves from the "sacred oak" and distributed them amongst the people. The Saxons also valued this plant; they were the first to call it mistletoe. To them, mistletoe symbolized everlasting peace.



A MERRY CHRISTMAS

It's the happy season, time to rejoice in good fellowship and in the spirit of the first Noel. To our patrons we extend a hearty Thank You.

FARMERS' SUPPLY CO.
ANTON NIELSEN

Merry Christmas to Everyone!

Here's to a Yule that's brimming with fun, in the season's special and joyful mood. Our best to you!



State Farm Insurance Cos.
Wallace Wood, Agent

Stivers Restaurant & Bar



Christmas Greetings

We're thankful for our many friends and wish them happiness at this very special time. Merry Christmas!

Standard Oil Products
George Knickerbocker, Agent
MARV LIVRANCE, Driver



Greetings

Guided by a Star, the Wise Men came to Bethlehem to worship and rejoice. Today, mankind turns again to the Manger, to find peace and blessings. May your Christmas joys be bountiful.

Palmer Motor Sales, Inc.

L. G. PALMER - GEORGE PALMER
Lyle Christwell - John Popovich - Jennie Collins - Faye Pollack
Donna Palmer - Fred Wagner - Mike McGlanahan - Don Koch - Ken Spicer
Everett Young - Keith Schuelke - Gary Larson - Dave Orlovski - Paul Shippy



CHRISTMAS GREETINGS

Here comes Santa, his pack bursting with all the good things he's bringing for you and yours! To this we want to add our good wishes that you find the joy, peace, laughter and contentment of this happy season beneath your tree on Christmas morn. We deeply appreciate your friendly good will and patronage and we hope to continue serving you.

Chelsea Electric & Water Dept.



BOWLING NEWS



Tri-City Mixed League Standings as of Dec. 15. Table with columns W, L and various team names like Chelsea Cleaners, Pepsi-Cola, etc.

Old Timers League Standings as of Dec. 15. Table with columns W, L and various team names like Blatz Beer, B. G. R., etc.

Chelsea Lanes Mixed League Standings as of Dec. 15. Table with columns W, L and various team names like Welsh Rabbit, Johnson's Tool Shop, etc.

Guys and Gals Mixed League Standings as of Dec. 11. Table with columns W, L and various team names like Chelsea Lanes, Manchester Farms, etc.

Chelsea Women's League Standings as of Dec. 11. Table with columns W, L and various team names like Chelsea Cleaners, Chelsea Lanes, etc.

Rolling Pin League Standings as of Dec. 19. Table with columns W, L and various team names like Spooners, Jolly Mops, etc.

Women's 150 or over games: D. Norris, 167; S. Timmerman, 176-180; K. Coles, 182-185; 184-180; P. Elliott, 150-165-182; S. Greenleaf, 160. Women's 425 or over series: P. Elliott, 497; S. Greenleaf, 431; B. Fritz, 500; S. Timmerman, 496; K. Covert, 432.

Women's 150 and over: L. Doody, 168-202; F. Gephart, 169-160-193; P. Fitzsimmons, 180-192-152; A. Turner, 182-158-178; H. Morgan, 179; D. Alber, 173-171-185; R. Johnson, 150-170; K. Lyndon, 156-170; J. Hutzler, 167-153; E. Harmon, 164; S. Timmerman, 163-162; L. Alexander, 155-161; H. Goltra, 160; B. Fike, 159; V. Harvey, 155; P. Poertner, 155.

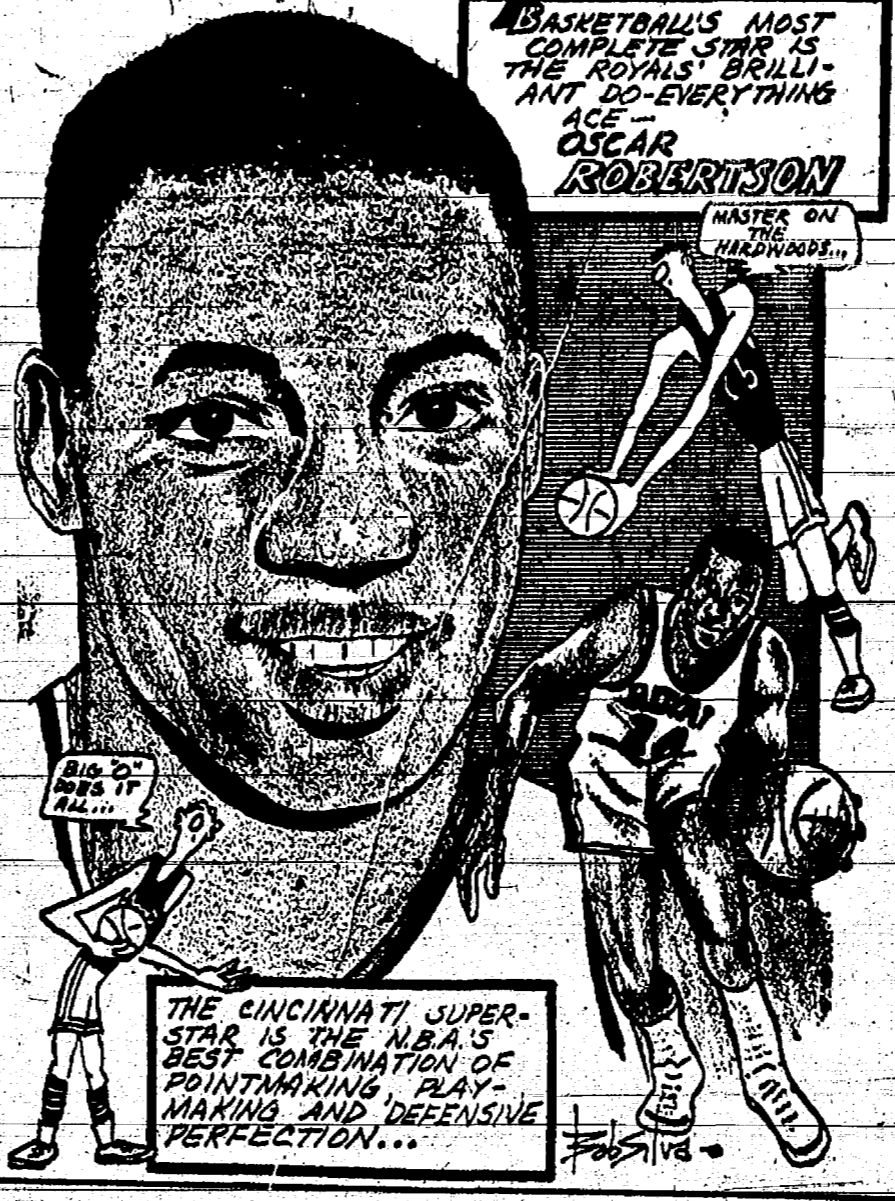
Men's 475 and over: R. Fike, 644; Q. Johnson, 575; R. Kiel, 571; R. Hutzler, 562; F. Powell, 542; M. Rabbitt, 530; D. Sindlinger, 528; J. Goltra, 519; M. Poertner, 516; G. Burnett, 519; B. Harvey, 510; D. Welshans, 510; B. Fitzsimmons, 502; D. Lyndon, 498; B. Robertson, 494; D. Alexander, 488; H. Burnett, 487; R. Morgan, 477.

ABSENTEE: Fred Lasher was pitching on the road when both his daughters were born.



FRIENDLY Christmas Greetings. We take pause from everyday routine to celebrate the Christmas holiday. And we welcome this opportunity to extend our warmest wishes and thanks to all. Hopb your Day is a happy one. CHELSEA LANES "The Modern Family Lanes"

SPORTS CORNER



THE CINCINNATI SUPER-STAR IS THE MAJOR BEST COMBINATION OF POINTMAKING, PLAY-MAKING AND DEFENSIVE PERFECTION...

Junior House League Standings as of Dec. 14. Table with columns W, L and various team names like Mid State Finance, Budweiser, Gables, etc.

Chelsea Nite Owl League Standings as of Dec. 18. Table with columns W, L and various team names like Jack & Son Barbers, Don's Std. Service, etc.

LOCALITIES: The Tigers have 10 Michiganders on their 1938 roster. FOOTBALL TOO: Bill Froshan, Tiger catcher, played end in football at the University of Michigan.

Chrysler Proving Grounds League Standings as of Dec. 19. Table with columns W, L and various team names like Colonial Chrysler, Wolverine Tavern, etc.

JUST A BABY: Dick McAuliffe's started his professional baseball career at the age of 17. He reached the major leagues when he was just 20.

Senior House League Standings as of Dec. 18. Table with columns W, L and various team names like Seltz's Tavern, Parish Cleaners, etc.

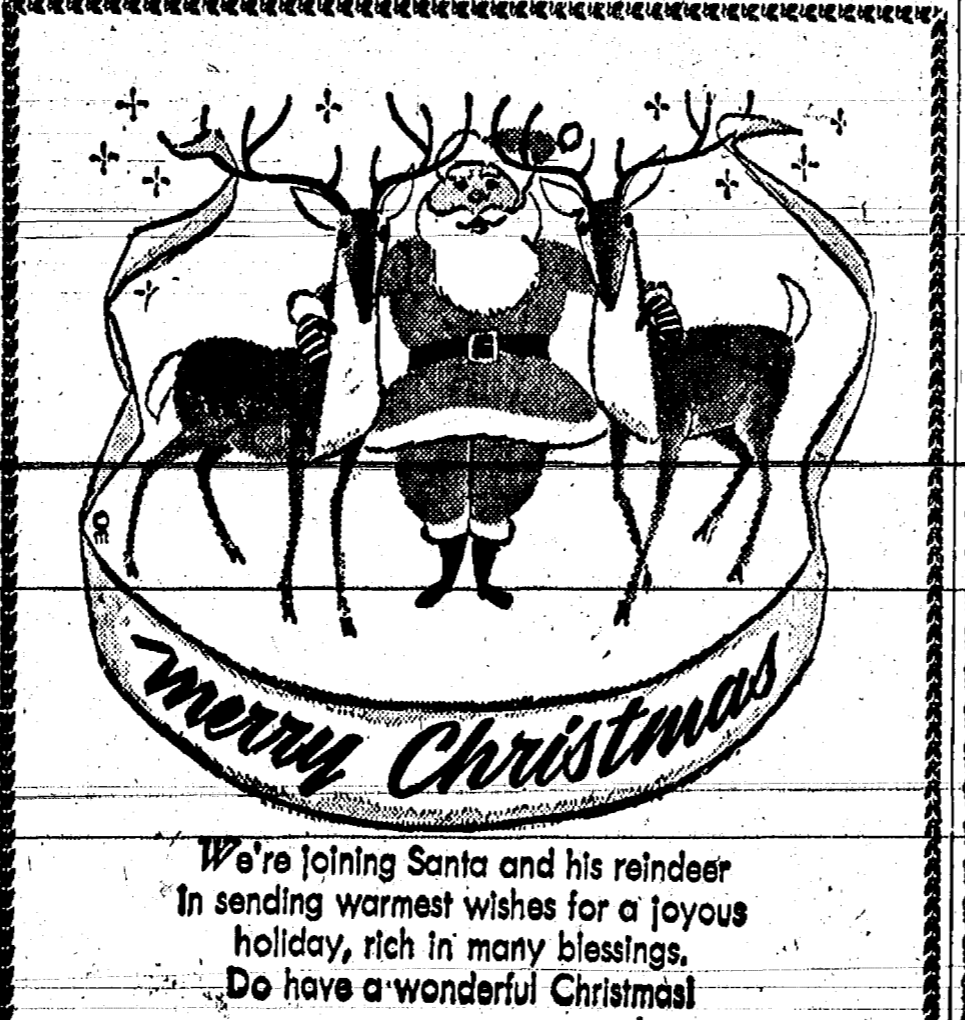
200 games and over: W. Griffith, 214; R. Maurer, 200; O. Kruse, 212; W. Eisenbeiser, 200; R. Spaulding, 200; D. Eder, 201; G. Schneider, 222; R. Eder, 200-202; A. Clomes, 233; H. Burnett, 220; R. Bauer, 200; E. Keizer, 201; J. Harook, 214; R. Knickerbocker, 204; L. Salyer, 224; S. Hopkins, 212; G. Gaeth, 215; J. Stoffer, 214.

Chelsea Suburban League Standings as of Dec. 13. Table with columns W, L and various team names like Floor Mobil, Kresge Arborland, etc.

150 games or over: E. Lake, 177-156; D. Sannes, 155-104; M. Sannes, 430; S. Bowen, 438; D. Norris, 458; B. Smith, 474; D. Fouty, 480; N. Packard, 486; B. Harook, 558; H. Morton, Jr., 558; S. Hopkins, 554; W. Howes, 551; G. Drusch, 549; B. Fletcher, 549; J. Warmingham, 548; J. Turner, 532; R. Brown, 532; L. Hocking, 529; C. Parish, 528; R. Stinehelfer, 528; L. Salyer, 531; H. Kunzelman, 525; B. Youcum, 522; J. Fitzsimmons, 516; C. Goff, 511; A. Peterson, 508; G. Gaeth, 505; K. Norris, 504; C. Harley, 500.



CHRISTMASTIME GREETINGS. Our warmest thanks to you with this wish that this merry season will bring with it a sleigh-full of joys and bright Christmas cheer. WONDER BAR GREETINGS. OLD-FASHIONED Christmas sentiments coming to you with sincere gratitude for your kind patronage. WOLVERINE TAVERN. CARL - NINA - DON - GINNY



Merry Christmas. We're joining Santa and his reindeer in sending warmest wishes for a joyous holiday, rich in many blessings. Do have a wonderful Christmas! THE PUB DON McKINLEY and FAMILY and EMPLOYEES

Large advertisement for Klumpp Bros. Gravel Co. featuring an illustration of Santa Claus in a sleigh and the text: 'Like jolly old Santa himself, we've a pack of good wishes for a holiday season that will long be remembered for its good cheer, and its enduring happiness. KLUMPP BROS. GRAVEL CO.'

Artistic Views Reflect 'Winter Wonderland'

Bethlehem, it's the rainy
Hawaii, Santa Claus might
by boat, and Christmas
be celebrated on a sunny
In Australia, Christmas
time for picnicking—it's sum-
"down under."
In Northern lands, Decem-
ber does not always provide
pleasures of a "white Christ-

mas."
Despite the varying climates
Christmas is observed, and
the frequent shortage
of snow at the appropriate
the traditional image of
Christmas, and probably always
be a wintry, snowy land-
celebrated in song and
depicted in countless paint-

ings
The countryside under a blan-
ket of snow, the hillside drifted
in white, the trees bent down
snow or crystal-bright with
the lakes, rivers and streams
frozen in ice-covered magnifi-
—these are favorite themes
holiday lore, and favorite
for all those who spend
snuggled cozily among the
of modern centrally-
buildings and modern trans-
portation.

The "winter wonderland" of ice
and snow has been a frequent
source of inspiration for artists.
A wealth of winter land-
scape paintings that, although not
directly associated with Christ-
mas, seem to set the mood and
capture the spirit of the season.
In the 16th and 17th century Hol-
land, for instance, a whole tradi-
tion of landscape painting was
devoted to depicting winter
—a somewhat unusual since
winter weather of Holland is
especially cold.



BECAUSE CHRISTMAS IS TRADITIONALLY a winter wonderland, paintings such as "Winter Scene" by the Flemish artist Hendrik Avercamp seem to capture the mood and reflect the spirit of the holiday season. Avercamp devoted his talents to depicting

the winter landscapes of Holland. This painting, which is in the Rijks Museum, Amsterdam, appears in the Grolier Book of Art, a 10-volume encyclopedia.

For admirers of art and white
Christmases alike, one of the defi-
nitive painters of winter scenes
is Hendrik Avercamp.

Perhaps because he devoted his
talents exclusively to the
winter landscape, Avercamp's
paintings capture to perfection
both the beauties and pleasures
of winter. Bare branches of trees
etch their patterns against ex-

pansees of ice, in contrast with
the cozy cottages and, on the ice,
the merry skaters, for an ideal blend-
ing of the cold weather and warm
spirit of a winter holiday.

Of Avercamp's personal history,
little is known. Records show
that he was baptized in Amster-
dam in January 1585, and buried
at Kampen in 1634. His painting
was influenced by the Flemish
landscape tradition and particu-
larly by Pieter Bruegel the Elder,
a painter whose fascination with
the winter scene did much to
shape his landscape style.

The snow-covered hillsides seen
in the work of the elder Piet-
er Bruegel contrast strangely with
the flat, icy terrain of his native
Holland. The explanation is to
be found in travels which took
him to mountainous lands.

Bruegel became a member in
the Antwerp painters' guild in
1551, and shortly afterward jour-
neyed to France and Italy, says
the Grolier Book of Art.

In 1554 he returned from Rome
to the Netherlands, crossing the
Alps on his way. The mountains
and scenery of Italy made an im-
mense impression on him, as re-
flected in the drawings he made
at the time.

More than the "contemporary"
Italian art, those mountainous vis-
tas influenced his landscape style
—and ultimately inspired Aver-
camp and other Flemish paint-
ers of the ever-wonderful winter
scene.

The new Overseas Study Infor-
mation Service at Michigan State
University is designed to provide
college and university students
with information on current over-
seas study and service opportuni-
ties.

Favorite Lore, Legends Express Happy Holiday Season Mood

From home to home, from coun-
try to country, Yule celebrations
abound. The happy traditions of
gift giving, home decorating, carol
singing, card sending, candle light-
ing and tree trimming express the
meritment of the season.

Popular folk customs of nation
after nation have been absorbed
into the international legend and
lore of the Yuletide. Yet virtual-
ly every nation—and every home
and family—has its special
way of celebrating Christmas, and
its special memories of Christmas
past.

Carrying in Straw
Straw is a traditional part of
Christmas celebrations in Swe-
den—in probable remembrance of
the first Christmas when there
was straw in the manger.

While "carrying in the Christ-
mas straw" is a tradition rarer
than a modern custom, Swedish
people still make straw and wood-
en figures to hang on their Christ-
mas trees.

'San-Tan-Low-Yin'
In Hong Kong, Santa Claus goes
by the name of "San Tah You
Lin."

The Hong Kong department
stores employ elderly men who
are specially costumed for the
season. Just like Santa Claus,
San-Tan-You-Lin is present for
the purpose of holding the young-
sters on his knee and listening
to their requests for gifts.

Log Hat Charms
In ancient Germany, the Yule
log was known as the "Christ-
brand." One belief held that if
the charred log was placed in a
cabin, it would act as a charm
to ward off mice.

If the weather turned stormy,

the Christbrand was quickly
brought back to the fire. While
it burned, superstition said, the
house was safe from lightning.

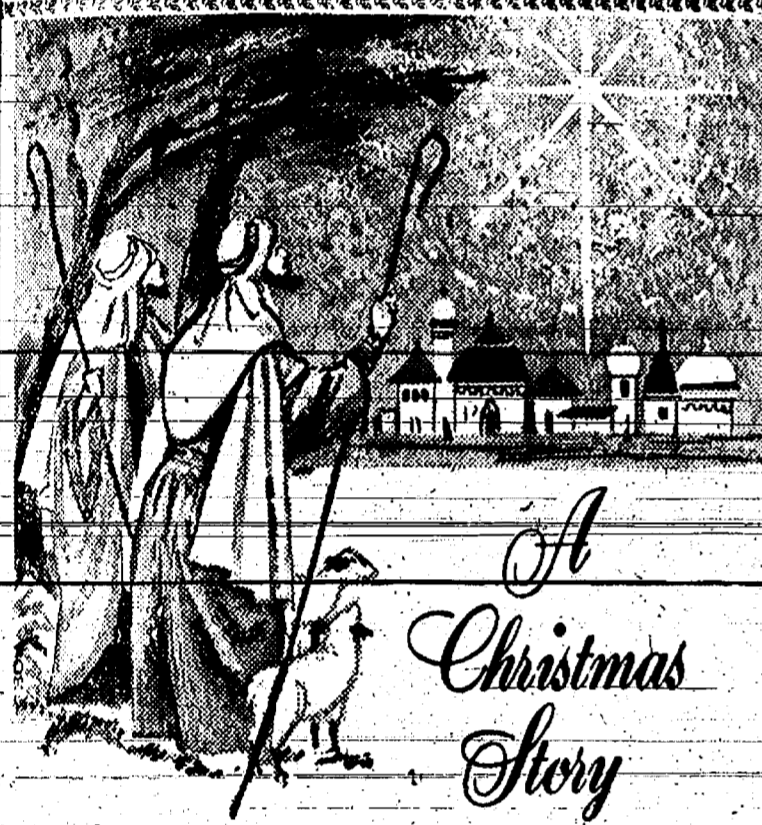
Going Mumming
"Mumming" is a Yule custom
that originated in early England.
Mummers, masked and in costume,
silently enacted ritual plays about
the death of winter and the old
year.

The custom still survives in
parts of the world, although the
plays are no longer performed.
Today mummers usually entertain
with dancing and instrumental mu-
sic. They are rewarded with
treats.

Symbolizing Victory
In legend, the laurel and the
bay have told the story of victory
and triumph since the days of
ancient Greece.

Ivy was the convivial green of
pagan holidays, and was supposed
to express the joyousness of Bac-
chus. The yew and the cypress
symbolize eternal life.

BIG HIT
Hank Aguirre got only one hit
in two appearances at bat in
1967, a triple to drive in three
runs.



A Christmas Story

Let the Divine Light that shone brightly upon
the shepherds on the day of our Saviour's birth
bring joy to you and your family this season.

House of Orient Hair Styling

Paul - Sally - Pansy - Marie - Kenneth

**IF YOU HURRY,
THERE IS STILL TIME TO SHOP!**
Suggestions for the Late Shoppers

FOR MOM:

- ★ NESCO ELECTRIC ROASTER
- ★ HAIR DRYER
- ★ CHAFING DISH
- ★ BROILER - OVENS
- ★ FOOD BLENDERS
- ★ ELECTRIC CAN OPENER
- ★ ELECTRIC KNIFE
- ★ WAFFLE IRON
- ★ ELECTRIC BLANKET

FOR DAD:

- ★ POWER SNOW THROWER
- ★ COHO FISHING SETS
- ★ FISH SPEARS
- ★ ICE SPUDS
- ★ TIP-UPS
- ★ SHANTY STOVES
- ★ ICE AUGERS
- ★ POWER TOOLS
- ★ LAWN TRACTOR
- ★ BAROMETER
- ★ SPORTSMAN'S SPACE BLANKET
- ★ GUN CLEANING KITS

YOUNG FOLKS:

- ★ TAPE RECORDER
- ★ TRANSISTOR RADIO
- ★ TOBOGGANS
- ★ SLEDS
- ★ SKATES
- ★ SNOW WINGS
- ★ BIKES
- ★ TOYS
- ★ GAMES

PETS:

- ★ SCENTED TOYS
- ★ DOG BASKETS
- ★ CEDAR SHAVINGS
- ★ LEASHES
- ★ WILD BIRD FEED
- ★ SUET CAKES
- ★ KITTY LITTER
- ★ DOG DISHES
- ★ BIRD FEEDERS

GLAD CHRISTMAS TIDINGS



Our heart-
felt wish for you
May a bright star
blaze a clear path
to wisdom, happiness
and contentment at
this glad Christmas tide!

**Murphy's
Barber
Shop**

Parke-Davis Adding To Research Facilities Based in Ann Arbor

Ann Arbor—Parke, Davis & Company announced this week a \$1 million addition to its research-administration building here that will provide 22,000 more square feet of laboratory and office space for the drug firm's departments of clinical investigation and research information.

Included in the two-story project will be space for medical personnel offices, laboratories, an area for the future installation of computer equipment, and a section that will be used for handling chemical and biological records.

In all, the construction will add another 126 feet in length to the existing front of the research-administration building, bringing its total length to 373 feet. Both old and new sections will be 84 feet wide.

Henry W. Grubb, Parke-Davis' superintendent of construction engineering, says he expects construction to begin during the first half of December. Completion is scheduled for the end of 1968.

Enlargement of the research-administration building brings to about \$17 million the total investment in five separate structures at the Parke-Davis complex on Plymouth Rd., since it was opened here in 1960. The other

four are a research laboratory structure, a high pressure laboratory, a pathology-toxicology building, and a power house.

GREETINGS for Christmas

Let us adore Him, as did the kings, and thus find our faith renewed with joy and love.

KERN REAL ESTATE
L. W. KERN

GIFT CERTIFICATE From Merkel Bros.

To _____

Present this Certificate to us for merchandise of your selection to the value of _____ Dollars

With all good wishes from _____

No. _____ AUTHORIZED BY _____

Merkel Brothers Gift Certificate
Issued in any amount you may desire.
Easy to give. Wonderful to receive.

MERKEL BROTHERS

Greetings



We're wishing you joy and happiness during this beautiful season. May the true spirit of the Yuletide bring us peace and contentment, with thankfulness for our many blessings, as we celebrate with family and friends.



BLAESS ELEVATOR CO.



DIV. OF LARROWE FEED CO.

CHELSEA HARDWARE
110 S. Main Street
Phone BR 9-6311



Greetings for Christmas

We'd like to extend to you the sincerest "Thanks" and good wishes for this bright and sparkling season. May your holiday be full of joy.

SERVICE ROOFING CO.
"Boots" Altenbernt Manchester, Mich



Glad Tidings

Christmas holds a special joy. May it come your way, and bring peace and happiness to all those dear to you, in the glad spirit of this holy Day.

CLOSED CHRISTMAS DAY
Open Sunday, Dec. 24, 8 a.m. to 6 p.m.

JIM'S PURE SERVICE
JIM KALISHEK
Taylor Briggs - Bob Ball - Lennie Risner - Oren Wireman



"CHRIST IS BORN": Faithful to the spirit of the first Christmas is "The Nativity," by the Florentine painter Mariotto Albertinelli (1474-1515). The simple scene presents the Christ Child, with Mary and Joseph, in a realistic setting, and background detail suggests a hillside manger, typical of the rocky caves which were used for stables in Bethlehem. Painting is in the Uffizi Gallery, in Florence, Italy.

Christians Celebrate Holiday With Pageants of Joy, Prayer

"And suddenly there was with the angel a multitude of the heavenly host praising God and saying, 'Glory to God in the highest, and on earth peace, good will toward men.'"
—Luke 2:13-14

In church services this Christmas season, Christians everywhere gather to commemorate the miracle of a holy night—nearly 2,000 years ago. The message of Christmas lives anew—in candlelight and carols, in pageants and prayers.

joyfully, the happiness of Christmas finds expression in music and song. Choirs sing the praises of the Babe of Bethlehem, and sacred hymns and carols reflect the spirit of rejoicing. Even as the herald angels sang to shepherds long ago, so now exultant voices join in proclaiming the Birth of Christ, with "on earth peace, good will toward men."

"And it came to pass, as the angels were gone away from them into heaven, the shepherds said one to another, 'Let us now go even unto Bethlehem, and see this thing which is come to pass, which the Lord hath made known unto us.'"
—Luke 2:15-16

Along with the joyous exultation, there is a spirit of thankful humility in celebration of this holy Day. In both church and private devotionals, Christians ponder anew the word of the Christmas story, as it was told by two of His disciples, Matthew and Luke. It is read and re-read, remembered and reflected upon.

And it is—behold, symbolically, in Nativity scenes that, by treasured tradition, recreate the manger of His birth.

Prayerfully, each congregation and each individual celebrates Christmas, keeping always in memory that the glory of His coming was first revealed to humble shepherds, and that the Holy Child was born in a simple manger. Worshipers give thanks to God, for the Miracle and its meaning.

"And when they were come into the house, they saw the young Child with Mary His mother, and fell down, and worshipped Him: and when they had opened their treasures, they presented unto Him gifts, gold, and frankincense, and myrrh."
—Matthew 2:11

The Wise Men, says St. Matthew, followed a Star to seek and find the Babe of Bethlehem. Their joy at beholding Him, and their precious gifts in homage, express much of the wonder and majesty of the Christmas story, as it is envisioned today. Yet in these gifts was a prophecy, a poignant reminder of the sacred solemnity, the highest meaning of Christmas.

Gold was a precious treasure, fitting gift for the newborn King. Frankincense, an ingredient of incense, symbolized the legend of the "incense owns a deity night."

The third gift was a sad token of great sorrow to come. Myrrh, used by the ancients in funeral rites, symbolized Christ's own supreme gift of life and foretold His death upon the Cross.

At the manger, there was the shadow of Calvary.

This Christmas is celebrated, joyfully, prayerfully, solemnly, with dedication to its sacred meaning: The Child born in a manger to take up the burdens of mankind and bear them to the Cross, where He died that the spirit of man might live forever.

Over-Speeding Engine Is Problem With Some Snow Scooters

Engine problems with snow scooters often result from over-speeding the engine, says Robert G. White, Extension Agricultural Engineer at Michigan State University.

According to White, many snow scooters do not have a governor. Instead, a centrifugal clutch disengages the motor from the drive assembly at idling engine speed. When the throttle is opened, the loss tends to act as a governor, limiting top engine speed.

Running full-throttle on long climbs or even level ground will not result in engine over-speeding, White says. However, down-grade runs at full-throttle can cause over-speeding and rapid engine wear on snow scooters not equipped with a governor.

The agricultural engineer suggests throttling back somewhat on downgrades to prolong engine life.

'68 Fishing License Forms, Stamps Now On Sale at Dealers

Lansing—Distribution of more than one million of Michigan's 1968 fishing license forms and stamps has been completed to some 3,400 dealers throughout the state, the Conservation Department announces.

Copies of next year's fishing rules are also available with the 1968 forms or "identification" cards to which one or more stamps are to be affixed under a new licensing system. The number of stamps that each fisherman needs

to buy and place on the basic license form or "ID" card will depend on the type of fishing he plans, whether he is a resident or non-resident, and length of time he will be fishing.

Now on sale at new prices is the following choice of 1968 fishing stamps: Resident annual, \$3; non-resident annual, \$6; resident trout and salmon, \$2; non-resident trout and salmon, \$3; resident 7-day, \$3; non-resident 7-day, \$6; resident

and non-resident one-day Lakes stamp for lake trout and salmon, \$1. Both of the 7-day stamps permit husbands and their wives to take all kinds of fish, including trout, splake, and salmon. Unchanged for the 1968 season is the special 50-cent stamp for residents 65 years and older which covers all types of fishing. All 1968 stamps will be on sale for fishing during December this year.



Greetings

Peaceful as a countryside wrapped in snowy white, the quiet contentment of Christmas spreads across the land. We greet you with the wish that great joy may be yours at this happy, holy time. And with sincere thanks, we extend to you our great appreciation for your favors and friendly good will.

We Will Be Closed from Sun., Dec. 17 Until Tues., Jan. 9

SCHUMM'S RESTAURANT
BETTY and FRITZ



AT CHRISTMAS...

As the Wise Men came from the East bearing gold, myrrh and frankincense to the Holy Child, so let us bear in our hearts that greatest gift of all—Love toward each other, so Peace on Earth may prevail.



G. A. SALES & SERVICE
George - Matt - Don - Earl - Dale - Dick - Bob - Elmer - Claude - Howard

We take this opportunity to wish everyone a

Merry



Christmas

Hope your Day is a happy one, filled with all the special joys of the holiday season.

FRIGID PRODUCTS

LLOYD - GEORGE
Vern - Louis - Dan - Flora - Norma
Duane - Ronnie - Winston - Bennie - Dave